

Telford Methodist Circuit Newsletter

24th July 2025

Foundation Module Safeguarding Course

Lauren Baxendale will be doing a Foundation Module Safeguarding Course **on Saturday 2nd August 2025**, starting at 10am (Registration from 9:30am) at Wellington Methodist Church and finishing around 12:30pm.

Please contact either your Church Safeguarding Officer or Sharon in the Circuit Office to be booked onto the course. The foundation course needs to be refreshed every four years, if you're unsure when you last attended, please get in touch with Sharon by calling 01952 505108 or emailing: circuitssupport@telfordmeth.org.uk and she will happily check for you.

Advanced Safeguarding Course

Stephanie Bradley, Assistant District Safeguarding Officer is doing Advanced Safeguarding Training in the Telford Circuit on **Saturday 6th September 2025**, starting at 10am at Wellington Methodist church

Registration will be from 9:30am with a prompt start at 10am, finishing around 2pm.

Please book directly with Stephanie by calling 07494 734 473 or email: StephanieBradley@birminghammethodist.org.uk

Once again if you are unsure if you need to attend you are always most welcome to contact Sharon in the Circuit office and she will check for you.

Thank you.

Safeguarding
Young people and vulnerable adults

**Admaston Methodist Church
are looking for a cleaner.**

Presently 3 hours a week
Details available from

amkiddamc@btinternet.com



Eco News from the Telford Circuit



**Each of them will sit under his vine
And under his fig tree,
With no one to make them afraid,
For the mouth of the Lord of hosts has spoken.
*Micah 4:4***

Question 7 of the Worship and Teaching survey for Eco-Church asks:

Our church worships outdoors, in God's creation
Routinely / Occasionally / Never

This got me thinking: what would encourage us to take our worship outside our church doors? Perhaps this is the ideal time of year to try it out if we haven't already. Some might be fortunate enough to have an outside space available to use, others might make use of a local park, in which case permission should be sought; but there are benefits to both.

Singing and sound. Unless you are blessed with guitar or woodwind players you are best choosing hymns which are well known and for which accompaniment is not needed. If you have a large congregation or people hard of hearing, how will you ensure everyone can hear?

Seating and safety. Think carefully about safe access for all, appropriate seating and shelter from the sun. It will be helpful to warn people in advance so that they can bring sunhats and suncream but have a contingency plan in case it pours.

Using your environment. Rather than replicating what you normally do inside, this is an opportunity to incorporate more silence into your service or to contemplate the aspects of nature you can experience from your outside space. It might also be an opportunity to invite people to join you who would not usually feel comfortable inside the church building. How can you make them feel at home?

Useful resources – click on the links.

['Faith and worship'](#) summer prayers

Register with [Engage worship](#) for loads of great free resources

Bible readings and thoughts from [Green Faith](#) linked to climate justice

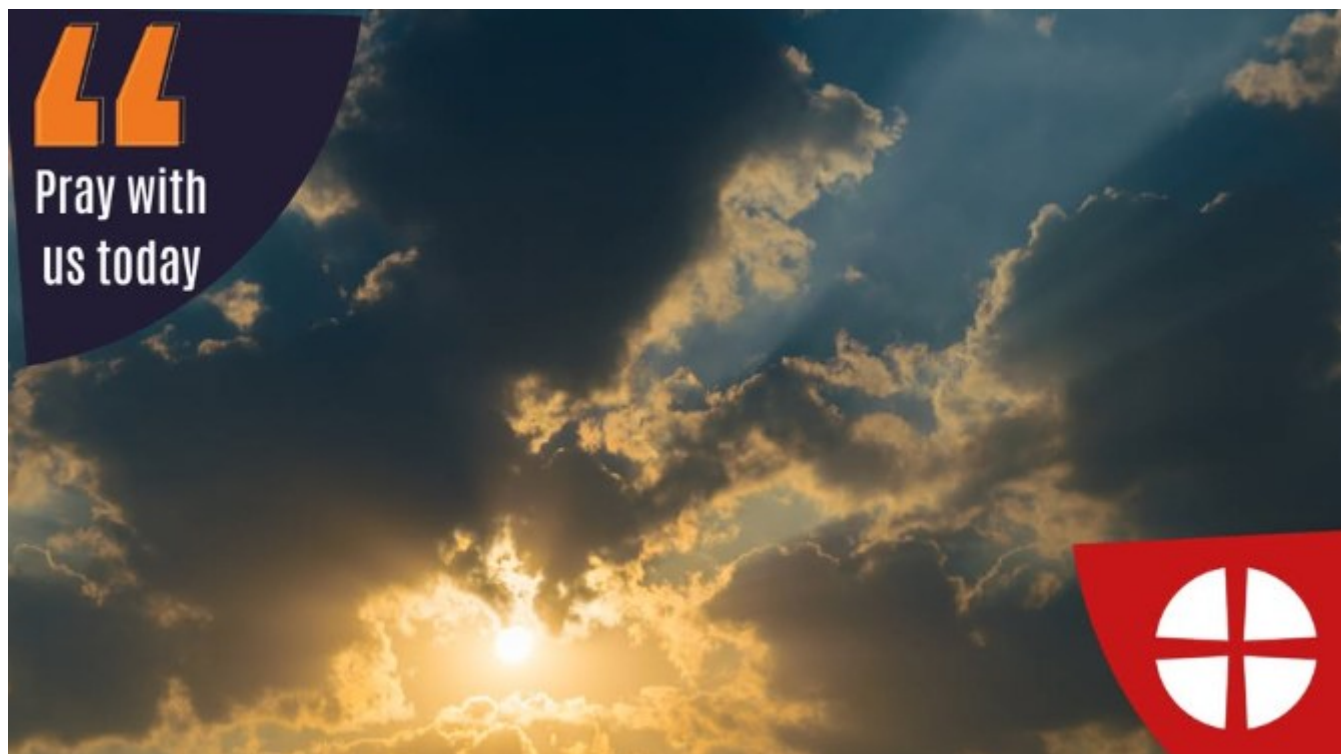
Pray with us today....

God of the Outcast; God of the Disempowered:

Thank you that you walk with us as One who has been rejected, despised, mocked.

Help us to follow the story of your pathfinders long past: justice-seekers like the Primitive Methodists who opened wide doors to welcome all.

Find more ways to pray at methodist.org.uk/prayer.



JOIN THE TEAM: RESOURCING MISSION COMMITTEE



We're looking for passionate people to help shape the future of mission in the West Midlands. The Resourcing Mission Committee is recruiting for several key roles — if you've got skills in finance, governance, communications, or just a heart for mission, this could be your time to step up.

🌐 Help us support vibrant ministry, creative outreach, and sustainable growth across our district.

👉 Learn more & apply here: <https://www.wmmethodists.org.uk/.../resourcing-mission...>

District Launch and Chair's Welcome Service

Join us to celebrate the launch of the new West Midlands District and welcome our new Chair Rev'd Rachel Deigh.

Saturday 30th August
3pm followed by refreshments

The
Methodist
Church
West
Midlands
District



Central Hall

Ablewell Street Walsall WS1 2EQ

Welcome to the Launch Service and Welcome for the new Chair of District!

Come join us at **Central Hall** as we celebrate the beginning of a new chapter. This event is the perfect opportunity to meet the new leader and connect with other members of the district. The service will begin at 3pm and join us afterwards for light refreshments and time to chat. Don't miss out on this special occasion to show your support and be a part of the excitement. See you there!

As part of the service we are going to creating a piece of weaving to symbolise our coming together - if you would like to contribute you are invited to bring a strip of coloured fabric – 5 cm width; up to 1 metre length.

[District Launch and Chair's Welcome Service Tickets, Sat 30 Aug 2025 at 15:00 | Eventbrite](#)

We're looking for our Youth President for 2026-2027: could it be you?

Passionate about the involvement of children and young people in every aspect of Church life? Looking for opportunities to influence the decision-making of the Church?

Discover more about this unique and exciting opportunity to travel and work around Britain and overseas, supporting children and young people from all backgrounds at methodist.current-vacancies.com/Jobs/Advert/3907528?cid=1885



PRIORSLEE VILLAGE

For more details contact Sylvia on 01952 299504

The Plant Stall in Priorslee Village has had a delivery of tools to refurbish. A good selection of hand tools from shears, trowels, forks and other useful hand tools. The stall also has a good selection of small ceramic pots. These will enhance your indoor plants or can be used as a pen tidy. Of course the plants are all growing on and some are in flower now. Tools will be put out by the stall as soon as the rain stops. Happy gardening. Regards Sylvia



Oakengates United Church

Coffee Morning



Saturday 26th July

10.00am – 12noon

Bacon Butties, Toast,

Tea & Coffee



We use Fairtrade Products

IONA WORSHIP

For A Summer's Evening

inspired by the Iona Community, Scotland

WELLINGTON METHODIST CHURCH

New St., Wellington

Telford TF1 1LU

Sunday 27th July 2025

5pm

ALL WELCOME

www.wellingtonmethodist.org.uk

www.iona.org.uk



THE FILLING STATION

Haughmond
& Wrekin

Monday 28th July 2025

7.15 for 7.30pm start

Haughmond & Wrekin Filling Station,
Rodington Village Hall, Shrewsbury,
SY4 4QS. 7:30 - 9pm, every 4th Monday.

We take a recess in August, back in September with Hellie Glynn, Leadership and Regional Consultant for Filling Station. In October, Mike & Susie Harris from Ignite Ministries will be speaking.

Future dates

- 22nd September
- 27th October

Main Speaker

Harry Warrell

Harry is married to Rev. Steph Warrell, and has a two year old daughter. He is Worship and Creative Pastor at Telford Minster.



Harry has an abiding passion to inspire people, to unlock their creativity and deepen their understanding of God, His Word and His ways. He is a published songwriter and musician.

More info at...

www.thefillingstation.org.uk/station/haughmond-wrekin





Bereavement cafe

A support group looking forward, following loss.

Thursday July 3rd

Thursday August 7th

Thursday September 4th

10:30am - 12:00pm

The Trinity Centre, Victoria Road, Shifnal

Offering support, understanding & empathy

A small group brought together through loss.

We offer a relaxed, friendly and safe environment to talk with others, share memories and make new friends.

Everybody welcome

For further information contact Claire: 07955 688627





HeartSpace

worship for today

HeartSpace on Sundays

10:30am

Trinity Centre

Upcoming Dates

Sunday 20th July

Sunday 17th August

Sunday 21st September

The Church of
St Andrew
& Trinity
Church
Shifnal



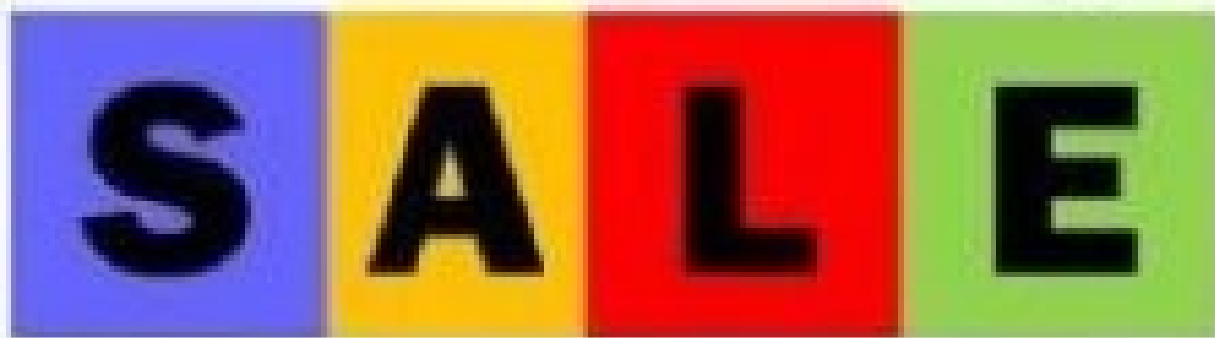
Contact:

heartspace@shifnalbenefice.org.uk



**Reaching out together to share God's
amazing faith, hope and love!**

Table Top



at

***DAWLEY CHRISTIAN
CENTRE***

on

Friday 15th August 2025

9.00am – 12 noon

**Come along and grab
a bargain.**

**To book a table for only £5 please call
Sharon on 01952 505108**

SALE

Every item!



5th September 2025

from 9 - 12 noon

At Dawley Christian Centre

Circuit Prayer Space

Circuit Prayer Space on a Monday morning at 8:30am.

Val Smith is inviting you to a scheduled Zoom meeting.

Topic: Circuit Prayer Meeting

Time: This is a recurring meeting Meet anytime

Join Zoom meeting:

[https://zoom.us/j/96716434790?
pwd=RTZZa210Q1ZOWCtLTWk3NHoyWDVIQT09](https://zoom.us/j/96716434790?pwd=RTZZa210Q1ZOWCtLTWk3NHoyWDVIQT09)

Meeting ID: 967 1643 4790

Passcode: 355690

God loves you
unconditionally, no strings attached.
That's the good news.

Faith Space - An online service for all

Starts at 6:30pm on the link below.

Weekly zoom services for anyone and everyone wherever in the world you are!

Join Zoom meeting:

[https://zoom.us/j/95651019665?
pwd=bGgyVEdvQ0cvNDRpWm5HTVB0UDRmdz09](https://zoom.us/j/95651019665?pwd=bGgyVEdvQ0cvNDRpWm5HTVB0UDRmdz09)

Meeting ID: 956 5101 9665

Passcode: 395669

God bless you all and see you soon!



Bible Study

Meet, read, ponder and share together
on a Friday afternoon at Broseley
Methodist Church.

Our starting theme will be **PLENTY**.
What does the Bible have to say to us
today about Social Justice?

All are welcome, no previous knowledge
or experience needed!

Meeting on monthly at 2.30-4pm on

- Friday 12th September
- Friday 10th October
- Friday 21st November
- Friday 12th December.



For more information contact Jo on
jokudlacik@gmail.com or 07840 596074

Interested in an evening group? Contact Kim on
kimfitzwarine@gmail.com or 07816 374414

Bible Studies in the Circuit

Admaston meet on the 2nd Tuesday of the month between 10-11:30am. They currently meet in the home of one of the church family but if the numbers increased they would be happy to transfer the bible study to church.

Cartway, Bridgnorth has 3 bibles study groups.

Shambles Group meet on 2nd Monday of the month at 10:30am

Orchard House Group meet on 3rd Monday in the month at 10:30am

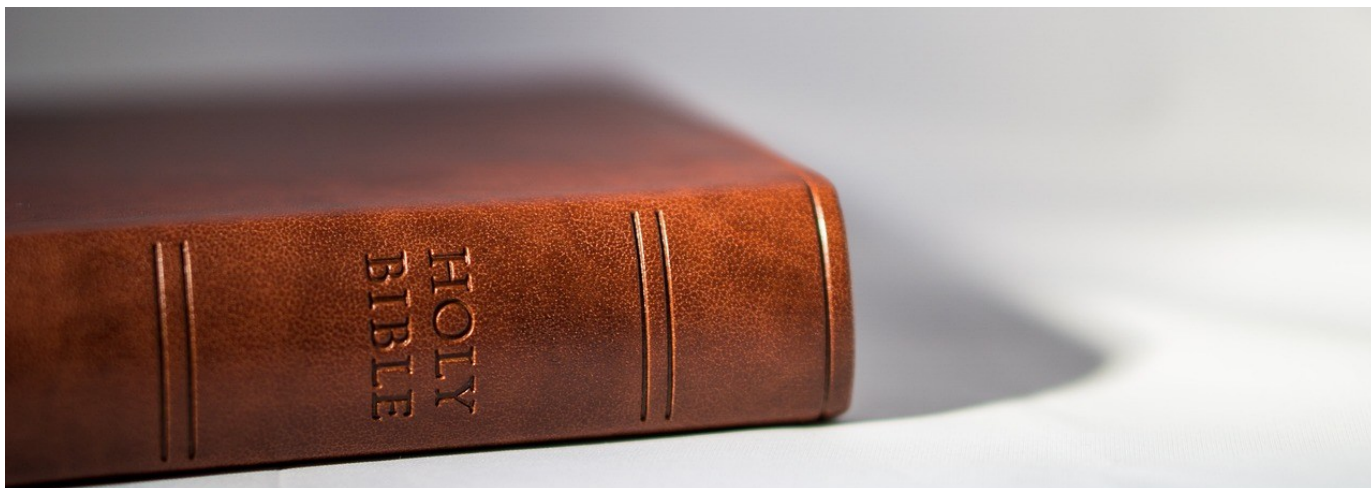
Greenfields Group meet 3rd Tuesday in the month at 2pm.

Dawley - Bible study group meets for two 5-6 weekly sessions each year. One during Lent the other during Advent.

Dunwell - has a bible study before church service each Sunday which (service starts at 10am)

Oakengates Bible Reflections Group meet for two series of 5-6 weekly sessions each year. One of these is in Lent and the other in the autumn. As they usually meet in someone's home, we do not include the venue in general publicity.

Online Courses: Monday afternoon at 1:30pm, Monday evening at 7:30pm and Wednesday evening at 8pm. Please contact the Circuit office for the Zoom link. All are welcome.





The Church of
St Andrew
& Emily
Church
School



Dementia Friendly Church
2022-23

Reaching out together to share
God's amazing faith, hope and love.

Forget me not Group for people affected by dementia. **Third Thursday of** **the month at 2:00pm**

**Come and join us - there's a warm
welcome and a friendly atmosphere.**

For more information, or for if you want to have a
conversation about memory difficulties or
dementia, contact Sarah Thorpe on 07982 248949 or
sarah.thorpe121@gmail.com

All you keen or would be bakers please
Join us for Bread Church at
Dawley Christian Centre

On the last Wednesday
of every month between 1-3pm
And the last Saturday of every
month between
9:30-1:30pm (with a light lunch)

ALL ARE WELCOME



Everything will be ready for you to make your
own bread and it's FREE!

Please come along and give it a go.

Coffee Morning at Cartway Methodist Church, Bridgnorth

On the 1st Saturday of each month between 10am –12 midday there is a Coffee Morning at Cartway Methodist Church.

There's going to be a great raffle,.

All are welcome.



Wellington Methodist Church

Are having All Age Drop-in Craft Sessions on the second Saturday of each month.

The sessions are FREE and start at 10am-11:45am.

You are welcome to drop in any time.
Everyone is welcome.



Coffee Mornings at Horsehay

**Every Wednesday:
10.30am - 12.00 noon**

**Join us for tea/coffee,
fellowship and lots of
chat and laughter!**



Ladies' Fellowship at Horsehay Second Tuesday of each month

in the vestry @2.30pm

ALL WELCOME - BRING A FRIEND!

Painting for Pleasure at Horsehay Methodist Church

Informal art groups (no tutor, but lots of chat and helping each other with tips and techniques). Whatever your skill level, if you enjoy drawing and/or painting, why not come and join us? **Thursday and Friday mornings** 10.00 - 12.30. £5.00 per session.

Wool Wanted

If anyone has any spare balls of wool they don't need, can you let Sharon (01952 505108) in the Circuit Office know please?

At Dawley we are making knitted and crocheted blankets for the dementia patients at the Princess Royal Hospital.

The colourful blankets help patients, particularly those with dementia, to find their way back to bed more easily – and also see the edge of the bed more clearly when getting in and out. They also provide a more homely feel to the wards. Thank you.

[Calling all knitters: blankets wanted for patients with dementia – SaTH](#)



Bereavement Cafe

A monthly opportunity to meet and chat with others who have been bereaved, hosted by members of local churches.

Second Monday of each month

2:30-4:00pm

Wellington Methodist Church





Albrighton Methodist Church

Regular church activities

Cafe Central

Every Thursday 10.00 to 12.00

Excellent coffee!

Meet with friends, old and new.



Sing a Long

2nd and 4th Fridays in the month.
2.00 to 3.30

Join in with "Old Time" songs
and songs from the musicals.
£2 per head.



Monthly Cafe

First Saturday in the month 10.00 to 12.00

With high quality bric-a-brac and
book stalls.



Open Door

First Tuesday in the month
7.30 to 9.00

Wide variety of speakers
ranging from singing, wildlife,
travel logs, health related.....



£2 per head. Speaker usually puts fees to a charity.

The **calling** of the
Methodist Church
is to respond to the
gospel of **God's love**
in **Christ** and to live
out its discipleship in
worship and mission

Our Calling

The **Methodist Church** 