



Telford Methodist Circuit Newsletter

2nd April 2026

The Journey to the Cross

The road was rough, the weight was great,
Each step He took, the end in sight.
The crowds that cheered now cursed His
name,
Yet still He walked, through grief and shame.

Upon His back, the burden lay,
A heavy cross, the price to pay.
With broken breath, He pressed ahead,
A crown of thorns upon His head.

The hammer fell, the sky turned black,
The earth itself began to crack.
A cry rang out, both sharp and true:
“Forgive them, Father; they know not what they
do.”

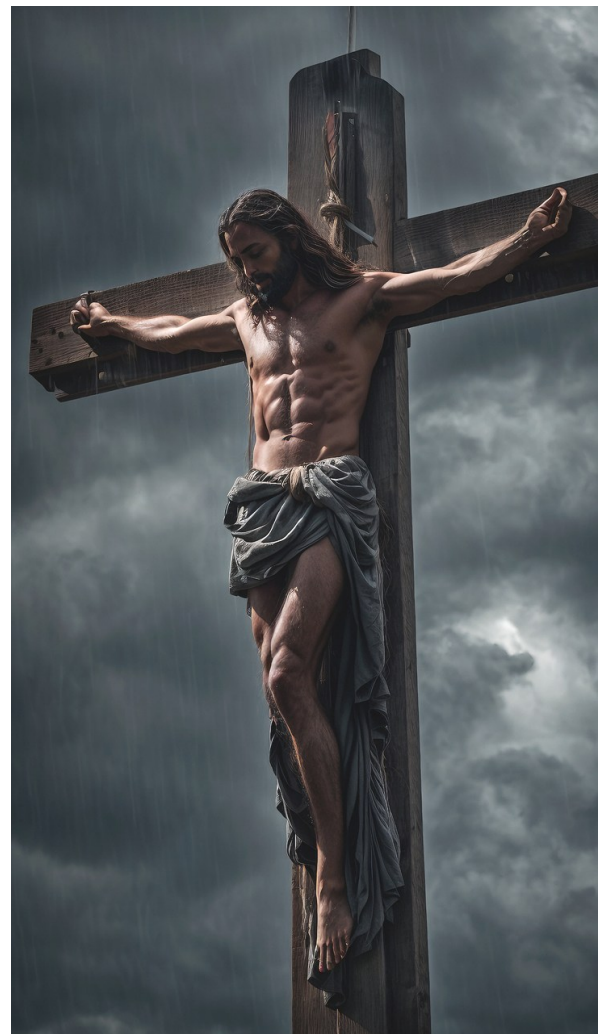
His friends had fled, His foes stood near,
Each breath He drew was laced with fear.
Yet through the pain, His gaze was kind,
For every soul He came to find.

The grave was sealed, the world stood still,
Yet love endured beyond the hill.
For in the sorrow, hope remained,
A light that darkness could not chain.

“And still He walks, through and heartbreak,
Carrying the world on His back.”

By Rev. Nik Wooller

Taken from This Is My Body



A fond Farewell to Dave Tarrier

On Monday 30th March, family and friends came together at Telford Crematorium for a service of thanksgiving to celebrate the life of Dave Tarrier. The service was led by Rev. Roger Dunlop.

Dave will be known to many across the Circuit as the treasurer of Horsehay Methodist Church. But to those who knew him well he was one of the most loveliest men you're ever likely to meet. He was happily married to Jenny for 59 years and was a wonderful father to their daughter Belinda.

Jenny shared a heart warming tribute to Dave, which showed he was a hard working family man, who loved to spend time with his family and was very much a hands-on dad, making go-karts out of scraps of woods etc, to 'horsing' around in the garden and his passion for koi fish and miniature trains was on another level.

The family had prepared his life in pictures, which played to 'Devoted to You' by The Everly Brothers.' As we watched Dave through the ages, mostly with Jenny and Belinda by his side, they all had one thing in common, and that was his lovely big smile, enjoying his life, as we know he did.

Dave was a corner stone of Horsehay Methodist Church where he and Jenny worked tirelessly raising funds, looking after the property and of course Dave did the accounts too.

Dave was also a really good artist. Horsehay Methodist Church held a Soup Lunch in March 2017 and at the same time they had an arts exhibition. I was lucky enough to be able to go along and was delighted to view his work, the attention to detail was very impressive.

Dave was very kind to me personally. He used to pop into the office on occasionally and there was one time when I wasn't doing too well, and I ended up getting upset. It was a personal issues and I had tried to leave it at home, as you do. But he asked me if I was ok... the eyes just ran and I just couldn't hold it in. I was trying to be ok, but clearly I wasn't. Dave just gave me his time to listen to me speak, no-one could do anything about my situation but talking about it helped.

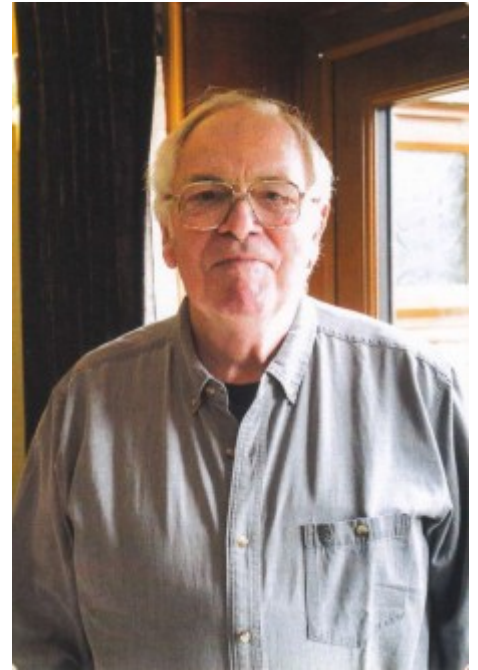
After that he always asked how things were, and when he said he was praying for me, I know he was. That meant so much.

Dave is going to be missed by so many. Please keep Jenny, Belinda and their friends in your prayers.

Good bye dear faithful servant.

Lots of love.

Sharon (Hanson)





Holy Week: Clearing space

Holy Week is the final part of Lent: a sacred journey from Jesus' entry into Jerusalem to the Cross and the silence of the tomb. From today, emails will arrive daily (Monday–Sunday) to help you walk this path with prayer and reflection.

This week's activity is simple: **keep a journal**. Each day, **read** the Holy Week Bible passage and **look back** at the Lent spiritual practices you've tried. Re-examine them in the light of that day's reading. What do you notice now? What shifts, what deepens? Jot down a few thoughts or prayers – small, honest steps are enough.

Read [Matthew 21:12–16](#)

Holy Week begins with disruption. Jesus enters the Temple and overturns tables, clearing space for prayer and presence. It's a startling image – and a reminder that sometimes we need to let go of what clutters our lives to make room for God.

Jesus disrupting the Temple, is also a demonstration of making space for God by challenging systems that exclude or marginalise.

Take a moment today to notice what fills your inner space. Are there habits, worries, or distractions that crowd out peace? What would it look like to clear a little space for God's Spirit?

Reflect in your Holy Week journal:

Think back to Lent's week 2 practice of noticing unexpected moments.

How might you see Jesus' action in the Temple as a surprising work of God?

What fixed forms in your life might need loosening?

Easter Activities and Services at Cartway Methodist Church (Bridgnorth)

Thursday 2nd April at 7pm

Maundy Thursday service at 7pm led by Rev'd Nik Wooller,
service to include holy communion.



Saturday 4th April, 10-00am to 12 noon

Coffee morning plus Knitted Easter Heart giveaway, the Cartway Art/Handicraft Group and friends of Cartway have been busy knitting Easter Hearts, and are going to be putting them onto the railings outside Cartway and giving Hearts out to all visitors and residents who pass by on their way up or down Cartway, we all find this a very good opportunity to share the Good News with all those we meet., each Heart will be having this label on them.

EASTER  = GOD'S 

Easter Day - Sunday 5th April at 10-45am

Easter Day Service to include Holy Communion
Preacher: Rev'd Ray Gill



Friday 10th April at 12 noon

We are serving soup as our effort for the Circuit's international project for Ajumako Osedzi Primary School in Ghana,



All are welcome.

Wellington Methodist Church

Easter



Services

Palm Sunday



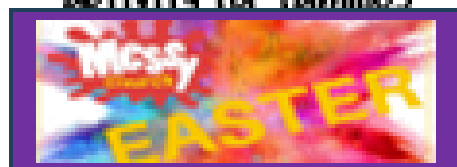
Sunday March 29th.

10.15am Service

led by Mr. Mark Berry

Palm crosses will be distributed.

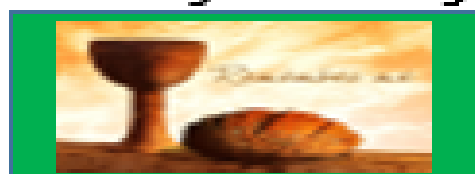
Messy Easter.
activity for families



Wednesday April 1st.

You are invited to join us for Messy Easter between 4.00 and 5.30pm, here, at church.

Maundy Thursday



Thursday April 2nd.

7pm AGAPE MEAL

Led by Mr. John Parkin?

Good Friday



Friday April 3rd.

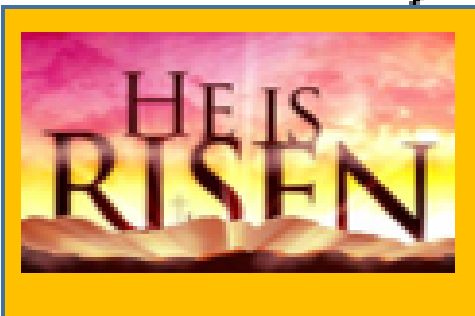
10.30 Service

led by Rev. Roger Dunlop

Hot cross buns following the service.

12noon Walk of Witness

Easter Sunday



Sunday April 5th.

8.45 am Communion in an Easter Breakfast setting. Rev. Roger Dunlop.

10.15 service

Led by Mr. David Corden

Please bring flowers to the service to dress the cross.

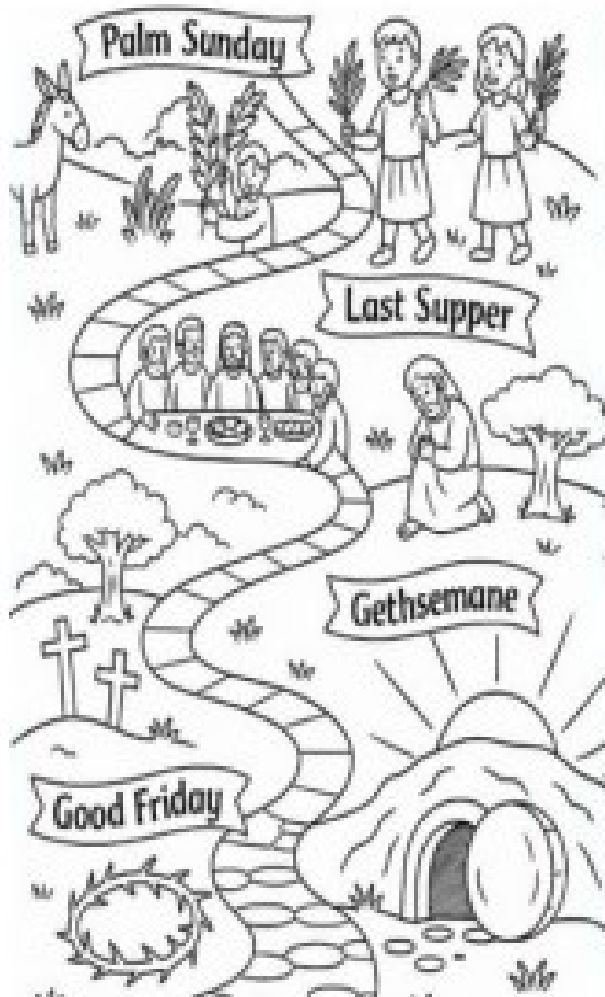
All Very Welcome

**Messy
Church**

EASTER

**At Dawley Christian Centre
High Street, TF4 2EX**

**Free Family Arts &
Crafts, Snacks & Drinks
Provided**



**Everyone Welcome
Thursday 2nd April 1-3pm**

**All children must be
accompanied by an adult**

**Further details contact
cyf@telfordmeth.org.uk**

Good Friday Service

in the **Dawley Bandstand**

(Weather permitting - in Church if not)

On 3rd April 2026

at 10:30am

**Refreshments will be served
after the service.**





Good Friday April 3rd.

Assemble at 12noon outside Wellington Methodist Church for a procession to the town square where there will be a short, reflective time with hymns

ALL ARE VERY WELCOME

Eco News from the Telford Circuit



"Be still, and know that I am God." *Psalm 46:10*

We started our lent reflections and challenges in the garden and the outdoors, and we return there for Holy Week. What a lot has changed in the six weeks that have passed. Ironically, at one of the busiest times in the Christian calendar, this week I invite you to slow down and notice!

Holy Week

This evening we will remember the garden of Gethsemane, where Christ, in great distress, prayed intensely. He retreated from all distractions and confronted that which troubled him, laying it bare before God and receiving strength. On Sunday we will join Mary in another garden as she stands puzzled before an empty tomb and finally, as the sun rises, recognises and worships her risen Lord. This week, you are invited to enjoy the outdoors and there to find renewed strength to play your role in caring for creation.

This week's green lent challenges are to slow down and to remove distractions.

START SIMPLE: Spend 20 minutes outside noticing the changes brought by spring. Give thanks to God

GO DEEPER: Have a screen free day. Notice how it feels.

BIG LEAP: Take a daily prayer walk. Pray for those with whom you share the local and global environment and those with influence over it.



Our Lent reflections and challenges are taken from Climate Stewards Carbon Fast. For more detail click [here](#)



Reminder: Can you hold a service celebrating creation over the next few weeks to mark Earth Day (22nd April)? Email jokudlacik@gmail.com for a service to use/adapt in your church.

Opportunity to engage with your local community: Could your church host a screening of the People's Emergency Briefing? Help to inform, start conversations and build connections with your neighbours over our common future. Find out more [here](#).

Exciting News!!! Rev Nik is Getting Married!

Rev Nik Wooller and Mark Rogers are delighted to announce that they will be getting married, on 11th April 2026 at Dawley Christian Centre at 2:30pm, followed by afternoon tea in the Coffee Bar.

Mark and Nik would be delighted if you could join them to celebrate their big day, so please accept this as your official invitation.

As we have no idea how many people will be coming, if you are able, please bring cake, that way they'll be plenty to share.

Please hold Nik and Mark in your prayers.

Lord, we pray that as Nik and Mark get ready for their wedding day, not only would their love for each other grow stronger, but they would become more and more aware of your great love for them. Amen.

We look forward to seeing you on what is definitely going to be a wonderful day.



Earth Day 22nd April

Are you responsible for leading a **Local Arrangement Service in April**? I am developing a service and resources which could be used (as it is or adapted to suit your congregation) as a celebration of God's creation and a recognition of our role as its stewards. It should be ready to send out by 22nd March. Please let me know if you would like me to send you a copy!

Jo

jokudlacik@gmail.com

A justice seeking church



Eco News and sources of funding!

The West Midlands Methodist District (to which we belong) recently held an Eco Forum to listen to the work we are doing in circuits and to consider the support they can offer. They will soon be offering funding to circuits to cover the cost of providing energy audits for our churches (giving advice on energy efficiency and how to cut costs and energy use in our church buildings). More information to follow over the coming months!

Meanwhile, the Learning Network host an Eco Community Network with good news stories from churches around the connexion and advice from experts. The community meet online four times a year (though you can just join when you are interested) and the next meeting is on Wednesday 22nd April at 7pm with a focus this time on funding and grants. To reserve a place click [here](#).

Some important dates in **April** as we seek the flourishing of our communities and wider world. Could you include these in your worship and/or prayers?

April

2 World Autism Awareness Day

An opportunity to find out more about Autism as a church and to consider and pray about how we might become more welcoming spaces for Neurodivergent people. Click [here](#) for a video about autism. The [National Autistic Society](#) also offer information, guidance and support.

22 World Earth Day

Jo has developed resources to use for a LA service during April or May... please get in touch with her if you would like her to send them to you!

25 World Malaria Day

Malaria is curable and preventable and yet there were still an estimated 610,000 deaths from malaria in 2024 (95% in Africa and 75% in children under the age of 5). Can we pray for sustained investment in the control and eventual elimination of the disease?

Did you know...?

The Methodist Learning Network host a range of free webinars entitled 'Equipping for Equality'. To find out more and book a place click [here](#).

The next meeting of the Circuit Team for Justice and Inclusion will be on **Wednesday 3rd June at Dawley at 7:30pm** All are very welcome!
Contact Jo if you would like more information jokudlacik@gmail.com



Discipleship: A Methodist Way of Life

A new enquirers' course is coming this summer

If you've been inspired by Market Drayton and Ashley Methodist Churches' Alpha experience, why not run *On The Way* in your church – or in partnership with other local churches? *On The Way* is a new short course rooted in A Methodist Way of Life. It offers space for honest conversation, reflection and growth, supported by a course booklet and short films – see a sneak peek below! [Sign up here](#) to be the first to hear once the course goes live this summer.



Laugh

If you're looking for a fresh way of exploring Scripture, download the Bible journaling kit from the [Bible Month resources page](#). Here's one we made earlier (the kittens were keen to "help"):



Table Top

SALE

**DAWLEY CHRISTIAN
CENTRE**

on Friday 17th April 2026

from 9 am – 12 noon

**Come along and pick up a
bargain.**

**To book a table please call
01952 505108.**

BSL Workshop in Telford

BSL Training at Wellington Methodist Church, 25th April

This is a great opportunity to learn BSL in a Christian context in Telford. This all-day workshop will be provided by Signs of God. Signs of God write:

"Whether you are Deaf or hearing, have no BSL or you are fluent - we have something for everyone.

Teaching will be delivered by both Deaf and hearing tutors and an interpreter will provide support with communication."

For more details and booking please see the Signs of God website at this address:

<https://www.signsofgod.org.uk/events/124>

The opportunity is open to people from across the region and for them there is a course fee of £25. If you are part of the Church family at Wellington Methodist Church and/or the wider Telford Methodist Circuit this training will be funded as part of our commitment to being an inclusive Church. Please contact Barbara Murray, Sharon Hanson or John Parkin to access the relevant booking code.



Bereavement cafe

A support group looking forward, following loss.

Thursday March 5th

Thursday April 2nd

Thursday May 14th

10:30am-12:00pm

The Trinity Centre, Victoria Road, Shifnal

Offering support, understanding & empathy

A small group brought together through loss.

We offer a relaxed, friendly and safe environment to talk with others, share memories and make new friends

Everybody welcome

For further information contact Claire: 07955 688677



Pray with us today.

Lord of all creation, you have written our story with hands of grace. Every chapter filled with mercy.

Every verse a melody of love. May our lives sing of your faithfulness. Let our story be a testament of your goodness and our song a sweet offering before your throne. You weave sorrow in strands of gold, turning burdens into blessings unseen. Teach us to sing through every season, to trust when the road is steep, to know that your goodness is the chorus that carries us home.

You, O Lord, are our keeper, our composer, our strength, our song. To you be all the glory, forever and ever.

Naomi Fetu, Methodist Church in Samoa

Find more ways to pray at methodist.org.uk/prayer.



The Methodist Church 

The Power of Prayer

Quiet Day

Saturday 18th April

9:30am - 2:30pm

Light lunch provided

Limited places

To Book please contact Evelyn and Jess on

07865 243183

Email revjessharper@gmail.com



Dear Churches Together members

I am writing to invite you and your congregations in all the Churches and meeting houses in Broseley and surrounding area to attend a free local screening of the **People's Emergency Briefing** film on the threats to British life from ongoing damage to nature and to our climate.

Location: The Birchmeadow Centre, Broseley TF12 5LP

Date: Friday 8th May 2026

Time: 7pm

Booking link: <https://www.eventbrite.co.uk/e/the-peoples-emergency-briefing-tickets-1984925347146?aff=oddtcreator>

The film features footage from last November's **National Emergency Briefing**, bringing together leading UK experts in climate science, food security, health, economics, national security and nature.

It presents a calm, evidence-based overview of how the climate and nature crisis is affecting everyday life in Britain - and what the science says about risks and responses.

The initiative is explicitly non-partisan and supported by a wide range of organisations, including the Church of England, National Trust, WWF, the Royal Meteorological Society and many others.

Faith communities have long traditions of stewardship, care for the vulnerable, and intergenerational responsibility. We believe this is an important moment for thoughtful, compassionate local dialogue.

Following the 45-minute film, we will host a structured discussion about what this means for our community.

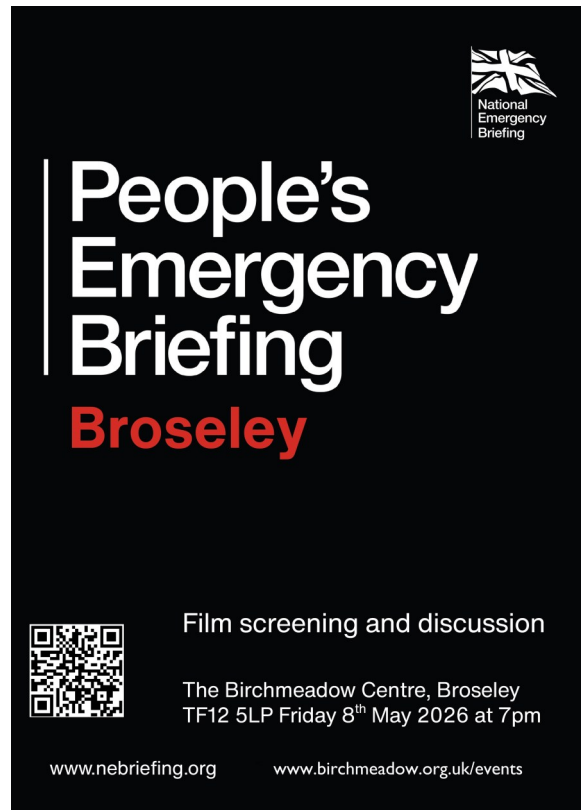
We would greatly value your presence.

I attach an event poster for your use to print and advertise as you think appropriate.

With best wishes,

Clare Cooper
Broseley Resident and
Broseley Climate Action Group member

Paul and Clare Cooper
cooperspc@fastmail.com



Our Story, Our Song: Growing your Calling in Worship

With the President of the Methodist Conference

Do you feel called to lead worship or see it flourish in your church?

Join us for a day designed to encourage, equip and inspire everyone involved in worship across our churches.

Saturday 9 May | 9:30–15:30
Trinity Methodist Church, Kidderminster, DY10 2JL

Save the date! More information coming soon...

9

5

26

Mark your
calendar!



Garden Volunteers Wanted

Do you enjoy gardening and have a couple of hours a week spare?

If so, we'd love you to join a small team to help us maintain our sensory garden at the back of Dawley Christian Centre Methodist Church, situated in the middle of the Dawley High Street.

For more details please call Sharon on 01952 505108.

Thank you.



Circuit Prayer Space

Circuit Prayer Space on a Monday morning at 8:30am.

Val Smith is inviting you to a scheduled Zoom meeting.

Topic: Circuit Prayer Meeting

Time: This is a recurring meeting Meet anytime

Join Zoom meeting:

[https://zoom.us/j/96716434790?
pwd=RTZZa210Q1ZOWCtLTWk3NHoyWDVIQT09](https://zoom.us/j/96716434790?pwd=RTZZa210Q1ZOWCtLTWk3NHoyWDVIQT09)

Meeting ID: 967 1643 4790

Passcode: 355690

God loves you
unconditionally, no strings attached.
That's the good news.

Faith Space - An online service for all

Starts at 6:30pm on the link below.

Weekly zoom services for anyone and everyone wherever in the world you are!

Join Zoom meeting:

[https://zoom.us/j/95651019665?
pwd=bGgyVEdvQ0cvNDRpWm5HTVB0UDRmdz09](https://zoom.us/j/95651019665?pwd=bGgyVEdvQ0cvNDRpWm5HTVB0UDRmdz09)

Meeting ID: 956 5101 9665

Passcode: 395669

God bless you all and see you soon!



Bible Studies in the Circuit

Admaston meet on the 2nd Tuesday of the month between 10-11:30am. They currently meet in the home of one of the church family but if the numbers increased they would be happy to transfer the bible study to church.

Cartway, Bridgnorth has 3 bibles study groups.

Shambles Group meet on 2nd Monday of the month at 10:30am

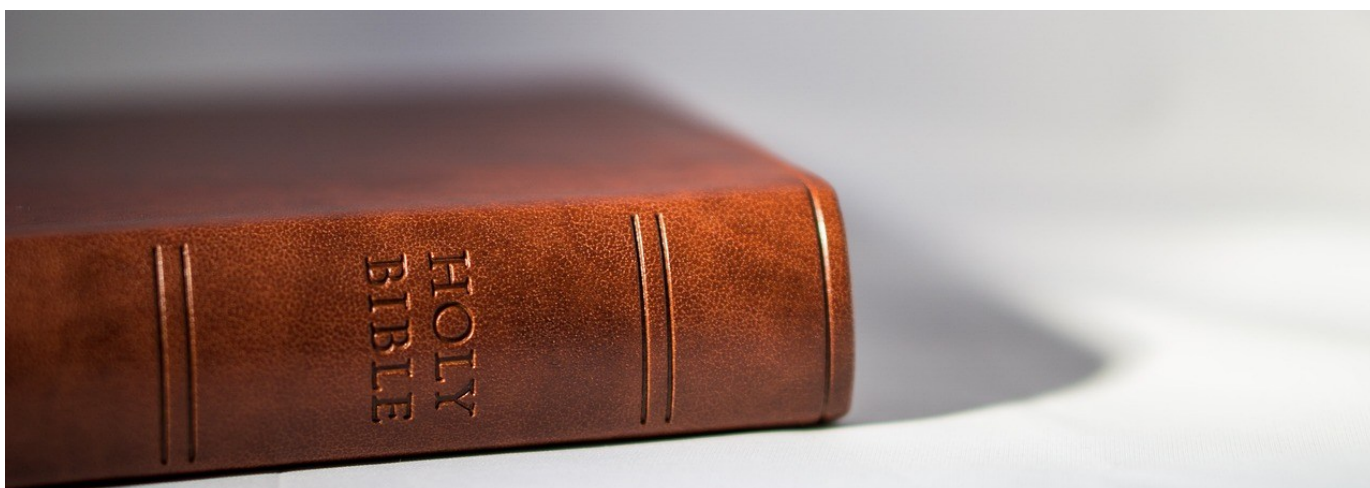
Orchard House Group meet on 3rd Monday in the month at 10:30am

Greenfields Group meet 3rd Tuesday in the month at 2pm.

Dawley - Bible study group meets for two 5-6 weekly sessions each year. One during Lent the other during Advent.

Dunwell - Has a bible study before church service each Sunday (Service starts at 10am)

Oakengates Bible Reflections Group meet for two series of 5-6 weekly sessions each year. One of these is in Lent and the other in the autumn. As they usually meet in someone's home, we do not include the venue in general publicity.



Notification of Research Project involving the Telford Methodist Circuit

Dear Friends,

Most of you will know me as a Local Preacher and Local Lay Pastor. Some of you will be aware I have been undertaking some study at the Queen's Foundation in Birmingham. The last component of my current programme of study is a research paper. With the agreement of the Circuit Superintendent, I have decided to put our Circuit at the core of my research. The purpose of this letter is to:

- alert you to the area of Circuit life that I will be exploring,
- set out how I will be doing my research,
- explain how you can get more directly engaged in the research,
- advise you what will happen with the research.

What I am researching

My research considers the phenomenon of Ghanaian Methodists in the Telford Circuit. Building unity is at the heart of my research. The writer of Ephesians encouraged groups from diverse backgrounds to be "built together in the spirit into a dwelling place for God." (Ephesians 2v22) I hope my research will help us to work together to develop a unifying response to our new context. In the Telford Methodist Circuit, the proportion of the community who have a Ghanaian heritage has increased rapidly over a short period of time. I hope this has the potential to be a sign of unity across ethnic identities. In this research I want to explore the robustness of that unity and start a conversation about how we might strengthen it further.

How I will be doing my research

I have been part of the community of the Telford Circuit for over twenty years and so I am what is called an "embedded researcher", and this leads to my choice of method. The data I will use for my research will be my daily journal. Between 1st March and 31st May 2026, I will maintain a dedicated section of my journal, paying special attention to observations, conversations, and behaviours which relate specifically to the phenomenon of Ghanaian Methodists in Telford. I will be particularly alert to points of divergence where I sense differences in "unspoken rules, habits and styles." I will also be interested to note aspects of the community life where there seems to be greater convergence between Ghanaian and non-Ghanaian members.

The only data that will be collected during this research are the notes in my journal and this will be available only to me, my markers and my supervisor. No observations will be attributed unless someone specifically requests it.

How you can be more directly involved (if you want to be)

I think my observations will be richer if they informed by informal conversations with you as members of the Circuit community and I would like to hear many voices from across the Circuit. To avoid any risk of people being involved without their consent these conversations must be initiated by you. I am very interested in your experiences and perspectives, but this must be on a voluntary basis. I am happy to talk to both individuals and groups and am equally interested in talking to people with and without Ghanaian heritage.

The conversations will not be recorded or documented but will inform my journal entries for the days on which they occur. To avoid the risk that you think I am speaking on your behalf, I will be explicitly locating my findings as coming from my point of view as a white, middle-class male who kind of “knows the ropes” in UK Methodism.

For these conversations to be considered as part of my research they must take place between 1st March and 31st May 2026. If you or your group would like to participate then please contact me at john@telfordmeth.org.uk. If you are organising a group session, then it is mandatory that members of the group must have seen this letter in advance and must be given the opportunity to exclude themselves. This applies to everyone but is especially true of young people.

After the research period I will be undertaking reflection and analysis and placing my journal findings in conversation with some wider reading. The final part of my paper will be to suggest what my findings might mean for pastoral practice.

I have committed to the Superintendent that I will provide a summarised version of my findings, analysis and recommendations to them. My hope is that this summary will be a useful conversation starter that will help us move into a process of co-creating a unified future together.

The Superintendent and I are aware that any conversations about defining characteristics have the potential to surface strong and difficult feelings. If this applies to you then the pastoral team in the Circuit will be available to provide support and care.

I look forward to hearing from and learning from you.

Love in Christ



John Parkin
Local Lay Pastor, Telford Methodist Circuit



**A Prayer Meeting is held at
Horsehay Methodist Church on the
first Thursday of each month**

**For the Autumn/Winter months, the
meetings will start at the earlier
time of 2.30pm**

Spiritual Abuse Awareness training dates 2026



Spiritual Abuse Awareness Training

Developed by the Methodist Church Safeguarding Team, Learning Network and Survivors Group in conjunction with Dr Lisa Oakley, Chester University & Thirtyone.eight

Course overview:

- What is spiritual abuse?
- What is the impact of the experience
- How to build healthy cultures

10.30 – 15.30

29th January 2026

4th June 2026

24th September 2026

19th November 2026

on Zoom

To book your place, please follow this link:
<https://imethodist-spiritual-abuse-training.eventbrite.co.uk>

For more information please contact Christine Kennedy (ckennedy@methodistchurch.org.uk)
Bridget Down (bridget@methodistchurch.org.uk) or David Knight (david@methodistchurch.org.uk)

The **Methodist Church**

We are pleased to announce 4 new dates for the Spiritual Abuse Awareness Training in 2026:

29 January

4 June

24 September and

19 November

All the sessions are on Thursdays, from 10.30 – 15.30

To book, please use the Eventbrite link: [Book on Eventbrite for Spiritual Abuse Awareness training](https://imethodist-spiritual-abuse-training.eventbrite.co.uk)

See the [Spiritual Abuse - The Methodist Church](https://www.methodistchurch.org.uk/spiritual-abuse) webpage for further details.

Download a poster [Spiritual Abuse Awareness training poster](#)

Please get in touch if you have something to share.

Email:

circuitssupport@telfordmeth.org.uk

or phone 01952 505108



**Sunday 26th July 2026
at 4pm**

**At Wellington
Methodist Church**

**Farewell service for
Rev Roger Dunlop**





Telford Methodist Circuit International Project 2026



together with

Ajumako Osedzi Methodist Primary School, Ghana



Our aims:

- 1) the provision of an outside canteen
- 2) the renovation and repainting of the classrooms & offices



Can you help us raise £6500 by the end of 2026?

Can you provide a plain cotton T Shirt (both for men and woman) to someone in a mental health institution (Pantang Psychiatric Hospital) in Ghana?

The newly inaugurated Sussanah Wesley Mission Auxiliary (SUWMA) within the congregation of Dunwell Methodist Church, Ketley are making their Easter project to provide clothes to the people who are living in Pantang Psychiatric Hospital. They would very much welcome your support. Very often, when families take their loved ones to the institution, they are just left there. They don't get any visitors and there's little hope of them ever leaving. Their families don't provide for them, so it's left to a few people to look after them. And they are struggling.

People taken to the institution include those who have had a breakdown, life in Ghana can be very hard and people struggle to cope.

We can help make their lives more comfortable and respect their dignity by providing clothes. It's very hot in Ghana so cotton T shirts are ideal.

If you can help please pass your T shirts on to a Church Steward and we will arrange a way to collect them. Thank you.

Best sizes to buy/donate would be size 14 and above for woman.

Large for men.

Bright beautiful coloured T shirts would certainly brighten their day!

Any help would be greatly appreciated.

Feel free to add a note too which could be read to our friends in Ghana.

It's a wonderful way to show love to a stranger.





Albrighton Methodist Church

Regular church activities

Cafe Central

Every Thursday 10.00 to 12.00

Excellent coffee!
Meet with friends, old and new.



Sing a Long

2nd and 4th Fridays in the month.
2.00 to 3.30

Join in with "Old Time" songs
and songs from the musicals.

£2 per head.



Monthly Cafe

First Saturday in the month 10.00 to 12.00

With high quality bric-a-brac and
book stalls.



Open Door

First Tuesday in the month
7.30 to 9.00

Wide variety of speakers
ranging from singing, wildlife,
travel logs, health related.....



£2 per head. Speaker usually puts fees to a charity.



Broseley Bible Study (Friday afternoon group)

Read, ponder, share and grow
together at
Broseley Methodist Church

In 2026 we will base our conversations on
the **Methodist Way of Life**.

How can the Bible inspire and encourage us
in our discipleship?

All are welcome, no previous knowledge or
experience needed!

Meeting at 2.30-4pm on

17th April - Tell



For more information
contact Jo on

jokudlacik@gmail.com or 07840 596074

Don't sit at home feeling cold and hungry.

Come and join us at the **Dawley Christian Centre**.
**Our Coffee Bar is open between 9-12:30pm from
Monday - Thursday as a Warm Space.** (We are open
Friday mornings as usual for cooked breakfasts.)

Between 11am—12noon we are offering a tasty
bowl of soup, with a slice of freshly made toast and
a refreshing cup of tea or coffee and **it's all free!**

We can get through this winter together.



Dawley Christian Centre
High Street
Dawley
Telford TF4 2EX



Reaching out together to share
God's amazing faith, hope and love.

Forget me not Group

for people affected by dementia.

Third Thursday of the month at 2:00pm

Come and join us - there's a warm
welcome and a friendly atmosphere.

For more information, or for if you want to have a
conversation about memory difficulties or
dementia, contact Sarah Thorpe on 07982 248049 or
sarah.thorpe121@gmail.com



What is a visit? An online session for pastoral carers



The **Methodist** Church 

Are you a Pastoral Visitor?

Did you know that the Methodist Church puts on free online sessions to equip and encourage those involved in pastoral visiting?

The next opportunity is either Thursday 16th April 7pm or Tuesday 21st April 10am. To find out more and reserve a place, click [here](#).

Cosy Cafe



Free Tea/coffee & Cakes Every Monday

10.30 a.m.—12.30 p.m.

We are an all age friendship group, meeting for chat, quizzes or join in with group games that are available. Refreshments are provided. It is a registered warm space and we welcome all who enjoy meeting others in a relaxed group of people.

Admaston Methodist Church, Bratton Road, Admaston. TF5 0AH

Coffee Morning at Cartway Methodist Church, Bridgnorth

On the 1st Saturday of each month between 10am –12 midday there is a Coffee Morning at Cartway Methodist Church.

There's going to be a great raffle,.

All are welcome.



Wellington Methodist Church

Are Craft and Chat Group meet on the 2nd & 4th Friday of each month from 10am-11:45am.

There is a small charge but this does include a drink

You are welcome to drop in any time.

Everyone is welcome.



Coffee Mornings at Horsehay

**Every Wednesday:
10.30am - 12.00 noon**

**Join us for tea/coffee,
fellowship and lots of
chat and laughter!**



Ladies' Fellowship at Horsehay Second Tuesday of each month

in the vestry @2.30pm

ALL WELCOME - BRING A FRIEND!

Painting for Pleasure at Horsehay Methodist Church

Informal art groups (no tutor, but lots of chat and helping each other with tips and techniques). Whatever your skill level, if you enjoy drawing and/or painting, why not come and join us? **Thursday and Friday mornings** 10.00 - 12.30. £5.00 per session.

Wool Wanted

If anyone has any spare balls of wool they don't need, can you let Sharon (01952 505108) in the Circuit Office know please?

At Dawley we are making knitted and crocheted blankets for the dementia patients at the Princess Royal Hospital.

The colourful blankets help patients, particularly those with dementia, to find their way back to bed more easily – and also see the edge of the bed more clearly when getting in and out. They also provide a more homely feel to the wards. Thank you.

[Calling all knitters: blankets wanted for patients with dementia – SaTH](#)



Bereavement Cafe

A monthly opportunity to meet and chat with others who have been bereaved, hosted by members of local churches.

Second Monday of each month

2:30-4:00pm

Wellington Methodist Church



District Pilgrimage 2026

The West Midlands District have organised a six-day Pilgrimage in Hereford over Easter Week, 5-10 April 2026.

Are you part of the West Midlands Methodist District? Would you like to pause, connect and deepen your faith journey?

Join us from 5-10 April 2026 for a gentle and reflective pilgrimage. You will connect with a “pilgrim community” of up to 12 people, gathering in Hereford (accessible by train) on the evening of Easter Sunday and finishing in Hereford the following Friday. Hereford is accessible by train.

During this six-day experience, we will walk, pray and eat together and share sleeping space in a number of Methodist and Anglican Churches. Luggage (including your airbed / camp-bed and bedding) will be transferred each day. Mileage will be around 7 to 11 miles, taken at a gentle pace on rural routes that may include stiles. We will share cooking within the group.

This is now a “tried and tested” formula which has been greatly appreciated by previous pilgrims. Being willing to be part of a short-term community is far more important than being super-fit, providing you can manage a modest amount of walking over a number of consecutive days, followed by nights on a church floor! The pilgrimage will be led by a small team of previous pilgrims. If means allow, we suggest a contribution of £140 to the kitty to cover food, accommodation and luggage transfer. Unfortunately, the living arrangements mean we cannot include children and young people, though they will be welcome to join us as accompanied day walkers (details later).

Numbers are strictly limited so if you are interested in joining the group this year, please don't delay.

Contact Roger Dunlop to book your space: roger@telfordmeth.org.uk



Safeguarding Reminder: Contact Your Church Safeguarding Officer First

Keeping everyone safe in our church community depends on clear communication and following the right channels.

If you have a safeguarding concern, no matter how small or uncertain, your first point of contact should always be your Church Safeguarding Officer (CSO). They are trained to provide guidance, support, and ensure the right steps are taken in line with Circuit safeguarding policy.

If your church does not have a CSO, or if an issue cannot wait, you can contact:

Lauren Baxendale, Circuit Safeguarding Officer

safeguarding@telfordmeth.org.uk | 07904 814741

Stephanie Bradley, Regional Officer for Safeguarding

bradleys@methodistchurch.org.uk | 07817 808557

Reporting concerns promptly to your CSO helps ensure that any issues are monitored, addressed, and escalated as needed.

Thank you for your vigilance and for helping keep our churches safe, welcoming, and supportive for everyone.

Safeguarding – Dates for Your Diaries!

Calling all those in the Circuit who require Safeguarding training, whether it's a refresher or your first time attending the course (it's the same course for both). There are three upcoming courses in the next few months, so book your place early by emailing me, Lauren Baxendale, Circuit Safeguarding Officer, at safeguarding@telfordmeth.org.uk.

Important Information:

- The refresher interval for safeguarding training is **four years**. This ensures that everyone in key roles receives good quality, up-to-date training.
- If you last attended a course in **2022**, it's time to get yourself booked on another!
- If your role requires the **Advanced Module**, you must **first complete** the **Foundation Module** before progressing.

Options for completing the Foundation Module now include an **online module** that can be done at your own pace. Please see the information in the article below for more details on accessing the course.

Which Safeguarding Training Do I Need to Attend?

Please see the following documents on the [Methodist Church website](#) for details on who needs to attend each module:

[Safeguarding Foundation Module Training: Who needs to attend?](#)

[Safeguarding Advanced Module Training: Who needs to attend?](#)

Many thanks,
Lauren



Lauren Baxendale

Circuit Safeguarding Officer

Dawley Christian Centre, High Street, Dawley, Telford, TF4 2EX
07904 814741
Safeguarding@telfordmeth.org.uk | www.telfordmeth.org.uk

Circuit 3/18 | Registered Charity 1134372

Please note that I work part-time—my regular working hours are Tuesday to Thursday during office hours. This email and any attachments are confidential. If you are not the intended recipient, please inform me and delete the message.

From 1st August 2025 Stephanie Bradley who looks after Advanced Training Course for the West Midlands District has a new email address:

Bradleys@methodist.org.uk

Stephanie's phone number: 07817808557

Dear Friends,

Please see latest link for advanced courses -

We have courses on -

- 18/4/26 Cannock Chase Circuit
- 9/5/26 Bromsgrove & Redditch Circuit
- 25/7/26 Bromsgrove & Redditch Circuit

Safeguarding
Young people and vulnerable adults

www.eventbrite.co.uk/o/stephanie-bradley-81147774823?msocid=39ddb784e41769a00dcea183e5f8680a

Thank you.

Steph

Safeguarding Training – Now Available Online

The Safeguarding Foundation Course is now available online via [MCBX](#), making it easier than ever for church members to complete their safeguarding training.

This flexible option is ideal for those who find it difficult to attend face-to-face sessions, as the course can be completed at your own pace. MCBX (mcb.theologyx.com) is the Methodist Church's online learning platform, providing access to safeguarding training, supporting materials, and a downloadable certificate on completion.

This online course complements, rather than replaces, face-to-face and participatory training, which continue to be an important part of safeguarding learning.

If you need to complete the Safeguarding Foundation Course, please speak to your Church Safeguarding Officer for further guidance.



Lauren Baxendale

Circuit Safeguarding Officer

Dawley Christian Centre, High Street, Dawley, Telford, TF4 2EX
07904 814741
Safeguarding@telfordmeth.org.uk | www.telfordmeth.org.uk

Hi all

Please see link for online advanced if you have anyone who prefers online ~

<https://www.eventbrite.com/cc/nd-methodist-district-safeguarding-training-4444573?utm-campaign=social&utm-content=creatorshare&utm-medium=discovery&utm-term=odclsxcollection&utm-source=cp&aff=escb>

Dates available:

Wednesday April 29th 10am & 7pm

June 30th 10am & 7pm

Any questions please ask.

Thanks

Stephanie Bradley

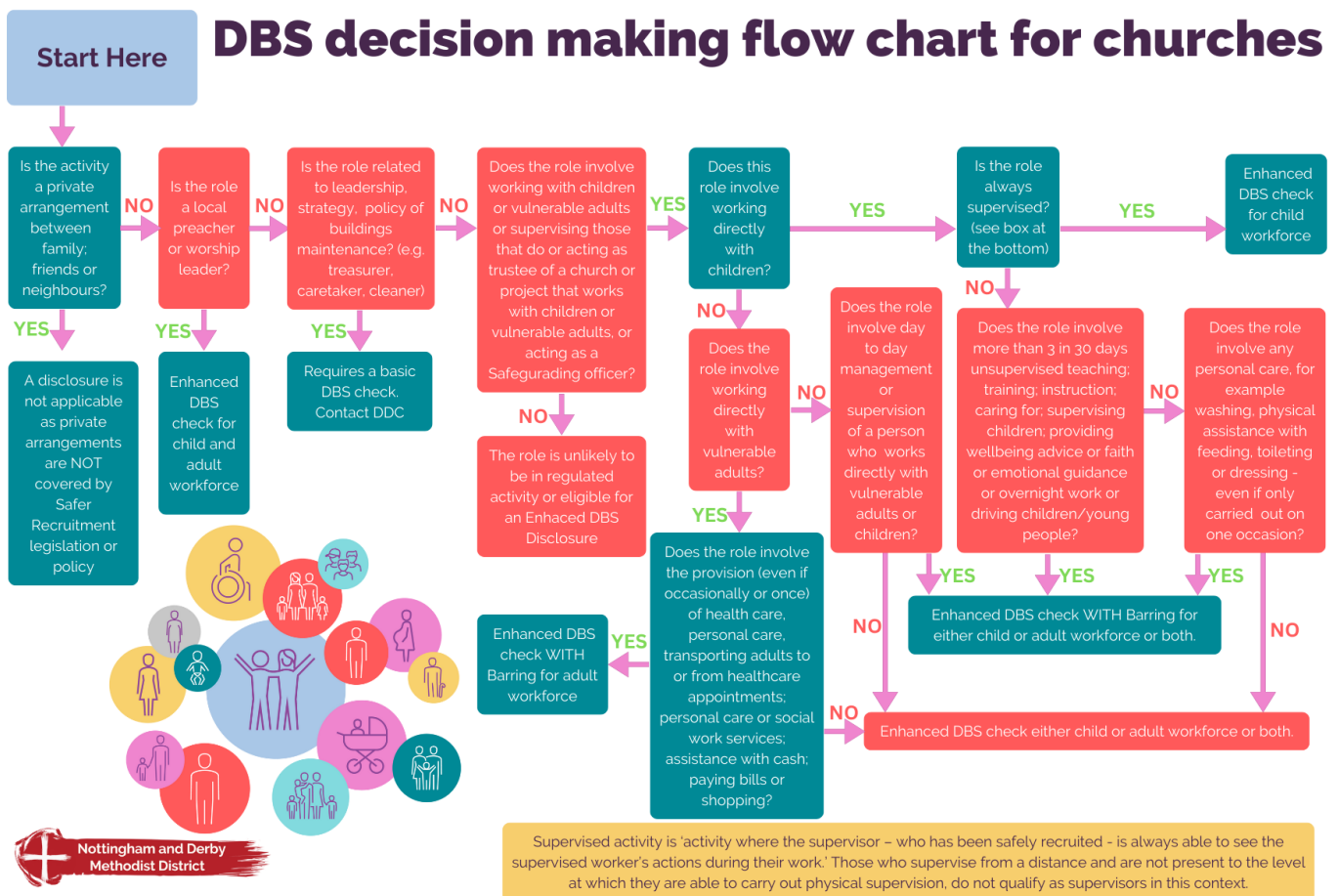
Regional Officer for Safeguarding - North West (West Midlands) |

The Connexional Team

Phone: 020 7467 5296

The **Methodist Church** 

Safeguarding
Young people and vulnerable adults



New Safeguarding Reporting Form

Safeguarding is everyone’s responsibility, and clear communication is key to keeping our community in the Telford Methodist Circuit safe and supported.

A new **Safeguarding Reporting Form** is now in use across the Circuit. Copies have already been shared with your **Church Safeguarding Officers (CSOs)** and should shortly be **appearing on the Circuit website and your church safeguarding noticeboards**.

If you don’t see a copy, or if you have a safeguarding concern, please notify your **designated CSO** as soon as possible. If your church does not have a CSO appointed, you can contact:

Lauren Baxendale, Circuit Safeguarding Officer safeguarding@telfordmeth.org.uk | 07904 814741

Stephanie Bradley, Regional Officer for Safeguarding bradleys@methodistchurch.org.uk | 07817 808557

By reporting concerns promptly using the new safeguarding reporting form, you help ensure that issues are recorded appropriately, responded to quickly, and escalated where necessary.

Thank you for helping us maintain safe and welcoming places for all.



CHURCH SAFEGUARDING CONCERN FORM

(Any person can complete this form)

PLEASE NOTE: If you are worried about contacting us and giving your details, please be assured that we will do what we can to support you. Please telephone your District Safeguarding Officer and they can talk with you about this. Your District Safeguarding Officer can also help you to complete this form or take details over the telephone.

We can arrange pastoral care for you if you would find this helpful. If you would like this, please tick here or contact your District Safeguarding Officer.

Your details

Name:			
Role/Position:			
Tel:			
E-mail:			
Circuit/District:			
Date:		Time:	

Details of the person you are worried about

Name:			
Address:			
	Postcode:		
Tel:			
E-mail:			
Child or Adult:	Approximate age or date of birth if known:		
Role (if applicable):			
Church/Circuit:			

If the person you are worried about is a child or vulnerable adult, it would be helpful if you could give some details about their carer.

Parent/Guardian/Carer

Name:			
Address:			
	Postcode:		
Tel:			
E-mail:			

Please tell us what you are worried about, when this happened and where:

Could you tell us what action has already been taken (if any)?

Please let us know of any other information you think would be helpful for us to know:

PLEASE NOTE:

We may need to share the information you have provided with other agencies to help ensure the person you are referring and others are safe. If the information is passed on to the statutory authorities your name may be disclosed to the person you are referring.

West Midlands District cares about your privacy and your trust is important to us. Our Privacy Notice explains how Local Churches, Circuits and Districts within the Methodist Church in Great Britain collect, use and protect your personal information. It also provides information about your rights (paragraph 9 of the Privacy Notice) and who to contact (paragraph 1 of the Privacy Notice) if you have any questions about how we use your information. You can find our Privacy Notice online (www.tmcpc.org.uk/about/data-protection/managing-trustees-privacy-notice). Your Circuit Safeguarding Officer will try to deal with any questions as a local point of contact. Alternatively, if viewing this form on line [click here](#) to read our Privacy Notice.

Thank you for completing this form.

The **calling** of the
Methodist Church
is to respond to the
gospel of **God's love**
in **Christ** and to live
out its discipleship in
worship and mission

Our Calling

The **Methodist Church** 