



Telford Methodist Circuit Newsletter

30th April 2026

Rev Nik Rogers has shared more photos of the fabulous time she spent on her honeymoon in Jamaica. Over the next two pages you can see the happy couple swimming with dolphins and enjoying the glorious weather and scenery.

They managed to squeeze in more pool time, sitting quietly, playing cards and sharing delicious food together.

Rev Nik will be returning to work on Tuesday 5th May and will be able to share all her fabulous stories with us.



Foundation Safeguarding Training – Wednesday 13th May

A Foundation Safeguarding training session will be taking place at Horsehay Methodist Church on Wednesday 13th May.

Registration will begin at 10:15am, with the course running from 10:30am to 1:00pm.

This session is open to anyone who requires Foundation Safeguarding training, and we would encourage churches to share this opportunity with those involved in roles where safeguarding awareness is important.

Places must be booked in advance. To reserve a place, please email safeguarding@telfordmeth.org.uk. The booking deadline is 7th May.

We hope to see a good number of participants from across the Circuit.

Many thanks,

Lauren

West Midlands District Festival at Codsall on Saturday 4th July.

Just in case you haven't heard, the West Midlands District are putting on a district festival with music, food stands, worship, workshops, outdoor communion, hope exhibition... much more. It will not be far away, at **Codsall on Saturday 4th July.**

For more information and to book... [click here](#)



Lauren Baxendale

Circuit Safeguarding Officer

Dawley Christian Centre, High Street, Dawley, Telford, TF4 2EX
07904 814741
Safeguarding@telfordmeth.org.uk | www.telfordmeth.org.uk

Circuit 3/18 | Registered Charity 1134372

Please note that I work part-time—my regular working hours are Tuesday to Thursday during office hours. This email and any attachments are confidential. If you are not the intended recipient, please inform me and delete the message.





Eco News from the Telford Circuit



Then God said, “Let the earth sprout vegetation, plants yielding seed, and fruit trees on the earth bearing fruit after their kind with seed in them”; and it was so... and God saw that it was good.

Genesis 1: 11-12

No mow May

How rare it seems that doing the right thing is to actually sit back and do nothing! In the case of encouraging diversity in our gardens, and specifically in our lawns, that is exactly the right thing to do.

According to Plantlife, approximately 97% of flower-rich meadows in the UK have been lost since the 1930s, and with them, vital food and habitat needed by wildlife. A healthy lawn with even a small patch of longer grass and wildflowers helps to tackle pollution, benefits wildlife and can even lock away carbon below the ground.

My own garden is tiny and I stopped mowing it about five years ago (except for round the very edge to keep it looking intentional rather than abandoned!) In that time, and with the help of a few native flower and grass seeds, I have seen a real explosion of colour and range in the plant life* and in the variety of insects and butterflies who visit. Most summers I see baby grasshoppers and the hummingbird hawkmoth and the seed heads attract a regular flock of goldfinches to feed who never fail to bring a smile!

Find out more and pledge to do nothing (but leave the grass to grow long for the next month) [here](#).

**Flowers in my mini-meadow include: plantains, campions, red clover, wild carrot, cowslips, ground elder, bedstraw, daisy, ox-eye daisy, yarrow, yellow rattle, buttercup, bird's foot trefoil, ragwort, dandelion, sorrel, poppy, salad burnet, knapweeds, marjoram, vetch, monkshood, forget-me-not and a few others I haven't identified yet!*

Goldfinch (a haiku)

If hearing you sing
makes me smile, just imagine
the effect on God.



A justice seeking church



As Christians we're called to seek God's justice. Justice that enables everyone, and all creation, to flourish. Justice that removes everything that diminishes people, that oppresses or exploits them. Justice that enables us all to grow in relationship with each other and with God.

...what does the Lord require of you but to do justice, and to love kindness, and to walk humbly with your God? Micah 6:8

Find out more about the Methodist Church's Justice seeking strategies [here](#).

Some important dates in **May** as we seek to promote justice and inclusion in our churches and wider world. Could you include these in prayers and worship?

10–16 May Christian Aid Week

This year, our support could help mothers in Nairobi, Kenya, facing the devastating reality of urban poverty and the daily struggle to feed their children. Click [here](#) for more details and resources



11–17 May Mental Health Awareness Week

This year the focus is supporting good mental health. Please find more information and resources to support your prayers and actions [here](#).



17 May Day Against Homophobia, Biphobia, and Transphobia

According to the most recent EU survey, 47% LGBT people had been attacked or threatened in the last year, with few of the most serious incidents being reported to the police. Can we pray for a climate of peace, safety and the valuing of all people? More details [here](#).

Did you know...?

The Methodist Learning Network host a range of free webinars entitled 'Equipping for Equality'. For example, on Tuesday 12th May 'Becoming an Intercultural Church'. To find out more and book a place click [here](#).

The next meeting of the Circuit Team for Justice and Inclusion will be on **Wednesday 3rd June at Dawley at 7:30pm** All are very welcome!
Contact Jo if you would like more information jokudlacik@gmail.com

The Book Room

22 April 2026

Tucked inside Hathersage Methodist Church, a quiet revolution is taking place – one made not of noise, but of pages turning.

'The Book Room', a second-hand bookshop inspired by John Wesley's publishing house, has quickly become a beloved stop for locals and visitors wandering through this Peak District village.

Part of the church's wider open-door initiative, the space has welcomed more than

10,000 people in just 8 months. That's around 42 curious wanderers a day stepping inside to explore Methodist history, pause for prayer, let children play, tackle a communal jigsaw or browse the ever-changing shelves of pre-loved books.



Open daily from 9.00am to 5.00pm, the church has become a gentle hub of hospitality.

The Book Room operates on trust: every book costs £1, paid via an honesty box or card reader. More than 3,000 books have already found new homes, with every pound reinvested into the project. Visitors are also encouraged to donate their own books, keeping the shelves fresh and allowing the stories to live on.

Monthly themes guide the displays, ranging from literary anniversaries, such as the 250th anniversary of Jane Austen, to topics reflecting the church's values, including Black History Month and environmental awareness.

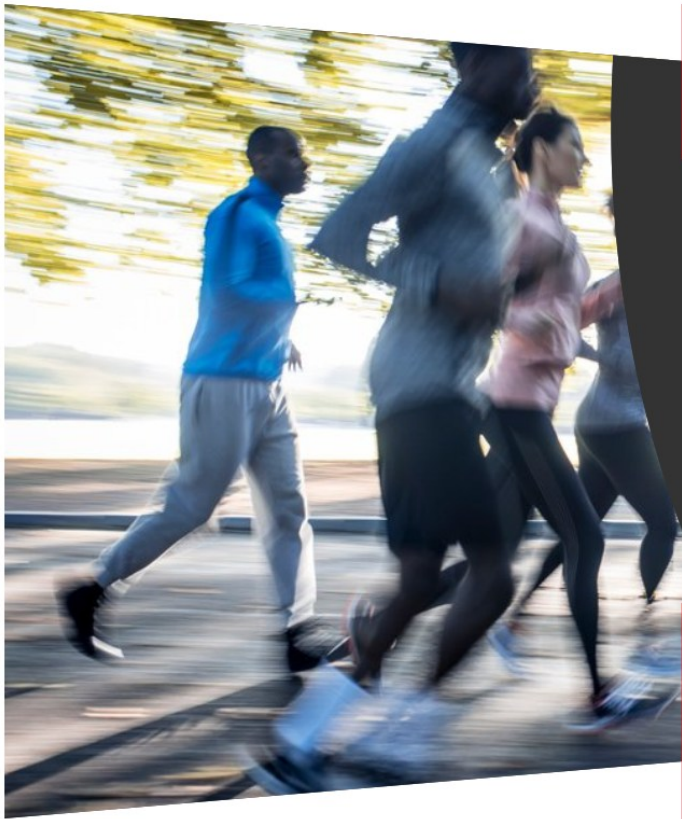
Dave Fisher, Lead Volunteer for the Open Church Project, said the idea is rooted in Methodist tradition. "John Wesley established The Book Room because he believed reading supported spiritual growth and helped sustain the early Methodist movement. That principle still resonates and we wanted to revive it in a way that serves the community today.

"The church's central location makes it well-placed to welcome passers-by and with the high number of visitors to Hathersage, we wanted the church to be a place people felt able to step into.

"None of this would be possible without the support of hard-working volunteers and community support. A bookshop only works if people keep it alive, and The Book Room has become a shared effort for the whole community."

Dave added: "Books have a way of opening doors; all we've done is make sure one of them is unlocked."

(With thanks to Samantha Roberts, Communications Officer, Sheffield Methodist District)



God made humans in the image of God

Each and every one of us is worthy of equal value and dignity.

For Methodists, striving for social justice is a keystone of their faith.

Pray with us today.

God, who changes not, we trust in you for our todays and tomorrows. We pray for those with responsibility for making key decisions that might change the direction of world or local events. We pray for those affected by the decisions of others, but who feel powerless in the face of forces of change. We commend to you the decisions that have to be made in your Church, and those charged with making them. Take our gifts and talents, voices and musical worship, Lord, and use them we pray in the service of your kingdom. Amen.

John Morton, supernumerary presbyter,
Kendal Circuit

Find more ways to pray at
methodist.org.uk/prayer.



The **Methodist** Church 

Dear Churches Together members

I am writing to invite you and your congregations in all the Churches and meeting houses in Broseley and surrounding area to attend a free local screening of the **People's Emergency Briefing** film on the threats to British life from ongoing damage to nature and to our climate.

Location: The Birchmeadow Centre, Broseley TF12 5LP

Date: Friday 8th May 2026

Time: 7pm

Booking link: <https://www.eventbrite.co.uk/e/the-peoples-emergency-briefing-tickets-1984925347146?aff=oddtcreator>

The film features footage from last November's **National Emergency Briefing**, bringing together leading UK experts in climate science, food security, health, economics, national security and nature.

It presents a calm, evidence-based overview of how the climate and nature crisis is affecting everyday life in Britain - and what the science says about risks and responses.

The initiative is explicitly non-partisan and supported by a wide range of organisations, including the Church of England, National Trust, WWF, the Royal Meteorological Society and many others.

Faith communities have long traditions of stewardship, care for the vulnerable, and intergenerational responsibility. We believe this is an important moment for thoughtful, compassionate local dialogue.

Following the 45-minute film, we will host a structured discussion about what this means for our community.

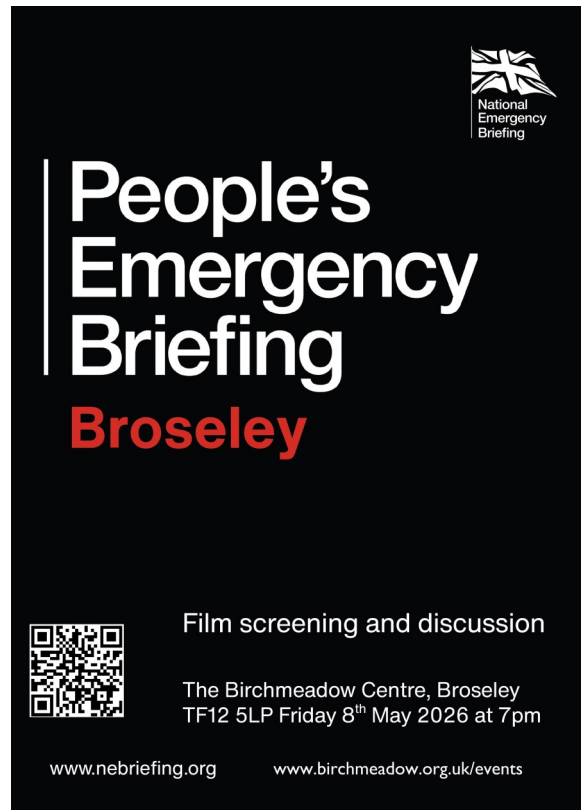
We would greatly value your presence.

I attach an event poster for your use to print and advertise as you think appropriate.

With best wishes,

Clare Cooper
Broseley Resident and
Broseley Climate Action Group member

Paul and Clare Cooper
cooperspc@fastmail.com



**SATURDAY 9TH MAY -
SHIFNAL TOWN CENTRE**

**christian
aid**

**Let's eat
CAKE!**

10AM ONWARDS

Come & Buy or Bring & Supply!

For more info contact Cathy Clayton on
cathyclayton57@gmail.com

**christian
aid**



Bereavement cafe

A support group looking forward, following loss.

Thursday March 5th

Thursday April 2nd

Thursday May 14th

10:30am-12:00pm

The Trinity Centre, Victoria Road, Shifnal

Offering support, understanding & empathy

A small group brought together through loss.

We offer a relaxed, friendly and safe environment to talk with others, share memories and make new friends

Everybody welcome

For further information contact Claire: 07955 688637



Come along to our

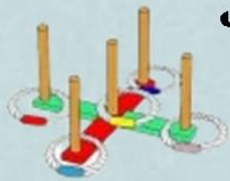


Coffee Morning



Admaston Methodist Church
On Behalf of Christian Aid

Bratton Road, Admaston
TF5 0AH



Saturday 16th May
10.30 until 12.30



Cakes

Preserves

Refreshments

Tombola



Games

Raffle

Jigsaws

Gifts

Car Park Opposite Admaston House off Pemberton Road

Our Story, Our Song: Growing your Calling in Worship

With the President of the Methodist Conference

Do you feel called to lead worship or see it flourish in your church?

Join us for a day designed to encourage, equip and inspire everyone involved in worship across our churches.

Saturday 9 May | 9:30–15:30
Trinity Methodist Church, Kidderminster, DY10 2JL

Save the date! More information coming soon...

9

5

26

Mark your
calendar!





Retreats

At Ashley Methodist Church

Upcoming retreat

'A DAY OF PERSONAL SPIRITUAL RENEWAL'

led by Rev Helen Kirk (Chair of District)

SATURDAY 30TH MAY
10AM – 3PM

A day of prayer, quiet time
and guided reflection,
including lunch and refreshments

Ashley Methodist Church
Wesleyan Road, Ashley. TF9 4JT

£20
per
person



We have a small number of funded places available for the day if finances are a barrier, so if you would like to access one of those, please mention on enquiry.



Enquiries / Bookings
retreats@ashleymethodist.co.uk

For more information
www.ashleymethodist.co.uk/retreats

TABLE TOP



**Friday May 15th 2026
at Dawley Christian Centre
9:00am - 12:00 noon**

**Please call Sharon on 01952
505108 to book a table
Only £5!!!**

**Come along and grab
yourself a bargain!**

A justice seeking church



Eco News and sources of funding!

The West Midlands Methodist District (to which we belong) recently held an Eco Forum to listen to the work we are doing in circuits and to consider the support they can offer. They will soon be offering funding to circuits to cover the cost of providing energy audits for our churches (giving advice on energy efficiency and how to cut costs and energy use in our church buildings). More information to follow over the coming months!

Meanwhile, the Learning Network host an Eco Community Network with good news stories from churches around the connexion and advice from experts. The community meet online four times a year (though you can just join when you are interested) and the next meeting is on Wednesday 22nd April at 7pm with a focus this time on funding and grants. To reserve a place click [here](#).

Some important dates in **April** as we seek the flourishing of our communities and wider world. Could you include these in your worship and/or prayers?

April

2 World Autism Awareness Day

An opportunity to find out more about Autism as a church and to consider and pray about how we might become more welcoming spaces for Neurodivergent people. Click [here](#) for a video about autism. The [National Autistic Society](#) also offer information, guidance and support.

22 World Earth Day

Jo has developed resources to use for a LA service during April or May... please get in touch with her if you would like her to send them to you!

25 World Malaria Day

Malaria is curable and preventable and yet there were still an estimated 610,000 deaths from malaria in 2024 (95% in Africa and 75% in children under the age of 5). Can we pray for sustained investment in the control and eventual elimination of the disease?

Did you know...?

The Methodist Learning Network host a range of free webinars entitled 'Equipping for Equality'. To find out more and book a place click [here](#).

The next meeting of the Circuit Team for Justice and Inclusion will be on **Wednesday 3rd June at Dawley at 7:30pm** All are very welcome!
Contact Jo if you would like more information jokudlacik@gmail.com

Garden Volunteers Wanted

Do you enjoy gardening and have a couple of hours a week spare?

If so, we'd love you to join a small team to help us maintain our sensory garden at the back of Dawley Christian Centre Methodist Church, situated in the middle of the Dawley High Street.

For more details please call Sharon on 01952 505108.

Thank you.



Circuit Prayer Space

Circuit Prayer Space on a Monday morning at 8:30am.

Val Smith is inviting you to a scheduled Zoom meeting.

Topic: Circuit Prayer Meeting

Time: This is a recurring meeting Meet anytime

Join Zoom meeting:

[https://zoom.us/j/96716434790?
pwd=RTZZa210Q1ZOWCtLTWk3NHoyWDVIQT09](https://zoom.us/j/96716434790?pwd=RTZZa210Q1ZOWCtLTWk3NHoyWDVIQT09)

Meeting ID: 967 1643 4790

Passcode: 355690

God loves you
unconditionally, no strings attached.
That's the good news.

Faith Space - An online service for all

Starts at 6:30pm on the link below.

Weekly zoom services for anyone and everyone wherever in the world you are!

Join Zoom meeting:

[https://zoom.us/j/95651019665?
pwd=bGgyVEdvQ0cvNDRpWm5HTVB0UDRmdz09](https://zoom.us/j/95651019665?pwd=bGgyVEdvQ0cvNDRpWm5HTVB0UDRmdz09)

Meeting ID: 956 5101 9665

Passcode: 395669

God bless you all and see you soon!



Bible Studies in the Circuit

Admaston meet on the 2nd Tuesday of the month between 10-11:30am. They currently meet in the home of one of the church family but if the numbers increased they would be happy to transfer the bible study to church.

Cartway, Bridgnorth has 3 bibles study groups.

Shambles Group meet on 2nd Monday of the month at 10:30am

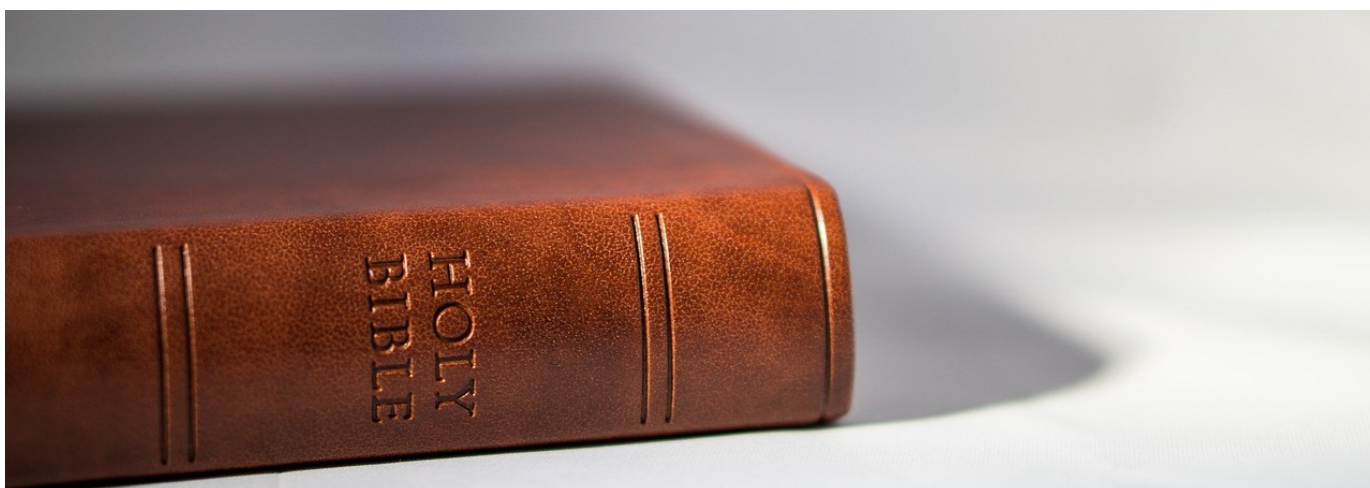
Orchard House Group meet on 3rd Monday in the month at 10:30am

Greenfields Group meet 3rd Tuesday in the month at 2pm.

Dawley - Bible study group meets for two 5-6 weekly sessions each year. One during Lent the other during Advent.

Dunwell - Has a bible study before church service each Sunday (Service starts at 10am)

Oakengates Bible Reflections Group meet for two series of 5-6 weekly sessions each year. One of these is in Lent and the other in the autumn. As they usually meet in someone's home, we do not include the venue in general publicity.



Notification of Research Project involving the Telford Methodist Circuit

Dear Friends,

Most of you will know me as a Local Preacher and Local Lay Pastor. Some of you will be aware I have been undertaking some study at the Queen's Foundation in Birmingham. The last component of my current programme of study is a research paper. With the agreement of the Circuit Superintendent, I have decided to put our Circuit at the core of my research. The purpose of this letter is to:

- alert you to the area of Circuit life that I will be exploring,
- set out how I will be doing my research,
- explain how you can get more directly engaged in the research,
- advise you what will happen with the research.

What I am researching

My research considers the phenomenon of Ghanaian Methodists in the Telford Circuit. Building unity is at the heart of my research. The writer of Ephesians encouraged groups from diverse backgrounds to be "built together in the spirit into a dwelling place for God." (Ephesians 2v22) I hope my research will help us to work together to develop a unifying response to our new context. In the Telford Methodist Circuit, the proportion of the community who have a Ghanaian heritage has increased rapidly over a short period of time. I hope this has the potential to be a sign of unity across ethnic identities. In this research I want to explore the robustness of that unity and start a conversation about how we might strengthen it further.

How I will be doing my research

I have been part of the community of the Telford Circuit for over twenty years and so I am what is called an "embedded researcher", and this leads to my choice of method. The data I will use for my research will be my daily journal. Between 1st March and 31st May 2026, I will maintain a dedicated section of my journal, paying special attention to observations, conversations, and behaviours which relate specifically to the phenomenon of Ghanaian Methodists in Telford. I will be particularly alert to points of divergence where I sense differences in "unspoken rules, habits and styles." I will also be interested to note aspects of the community life where there seems to be greater convergence between Ghanaian and non-Ghanaian members.

The only data that will be collected during this research are the notes in my journal and this will be available only to me, my markers and my supervisor. No observations will be attributed unless someone specifically requests it.

How you can be more directly involved (if you want to be)

I think my observations will be richer if they informed by informal conversations with you as members of the Circuit community and I would like to hear many voices from across the Circuit. To avoid any risk of people being involved without their consent these conversations must be initiated by you. I am very interested in your experiences and perspectives, but this must be on a voluntary basis. I am happy to talk to both individuals and groups and am equally interested in talking to people with and without Ghanaian heritage.

The conversations will not be recorded or documented but will inform my journal entries for the days on which they occur. To avoid the risk that you think I am speaking on your behalf, I will be explicitly locating my findings as coming from my point of view as a white, middle-class male who kind of “knows the ropes” in UK Methodism.

For these conversations to be considered as part of my research they must take place between 1st March and 31st May 2026. If you or your group would like to participate then please contact me at john@telfordmeth.org.uk. If you are organising a group session, then it is mandatory that members of the group must have seen this letter in advance and must be given the opportunity to exclude themselves. This applies to everyone but is especially true of young people.

After the research period I will be undertaking reflection and analysis and placing my journal findings in conversation with some wider reading. The final part of my paper will be to suggest what my findings might mean for pastoral practice.

I have committed to the Superintendent that I will provide a summarised version of my findings, analysis and recommendations to them. My hope is that this summary will be a useful conversation starter that will help us move into a process of co-creating a unified future together.

The Superintendent and I are aware that any conversations about defining characteristics have the potential to surface strong and difficult feelings. If this applies to you then the pastoral team in the Circuit will be available to provide support and care.

I look forward to hearing from and learning from you.

Love in Christ



John Parkin
Local Lay Pastor, Telford Methodist Circuit



**A Prayer Meeting is held at
Horsehay Methodist Church on the
first Thursday of each month**

**For the Autumn/Winter months, the
meetings will start at the earlier
time of 2.30pm**

Spiritual Abuse Awareness training dates 2026



Spiritual Abuse Awareness Training

Developed by the Methodist Church Safeguarding Team, Learning Network and Survivors Group in conjunction with Dr Lisa Oakley, Chester University & Thirtyone.eight

Course overview:

- What is spiritual abuse?
- What is the impact of the experience
- How to build healthy cultures

10.30 – 15.30

29th January 2026

4th June 2026

24th September 2026

19th November 2026

on Zoom

To book your place, please follow this link:
<https://imethodist-spiritual-abuse-training.eventbrite.co.uk>

For more information please contact Christine Kennedy (ckennedy@methodistchurch.org.uk)
Bridget Down (bridget@methodistchurch.org.uk) or David Knight (davidknight@methodistchurch.org.uk)

The **Methodist Church**

We are pleased to announce 4 new dates for the Spiritual Abuse Awareness Training in 2026:

29 January

4 June

24 September and

19 November

All the sessions are on Thursdays, from 10.30 – 15.30

To book, please use the Eventbrite link: [Book on Eventbrite for Spiritual Abuse Awareness training](https://imethodist-spiritual-abuse-training.eventbrite.co.uk)

See the [Spiritual Abuse - The Methodist Church](#) webpage for further details.

Download a poster [Spiritual Abuse Awareness training poster](#)

Please get in touch if you have something to share.

Email:

circuitssupport@telfordmeth.org.uk

or phone 01952 505108

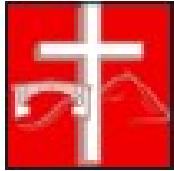


**Sunday 26th July 2026
at 4pm**

**At Wellington
Methodist Church**

**Farewell service for
Rev Roger Dunlop**





Telford Methodist Circuit International Project 2026



together with

Ajumako Osedzi Methodist Primary School, Ghana



Our aims:

- 1) the provision of an outside canteen
- 2) the renovation and repainting of the classrooms & offices



Can you help us raise £6500 by the end of 2026?

Can you provide a plain cotton T Shirt (both for men and woman) to someone in a mental health institution (Pantang Psychiatric Hospital) in Ghana?

The newly inaugurated Sussanah Wesley Mission Auxiliary (SUWMA) within the congregation of Dunwell Methodist Church, Ketley are making their Easter project to provide clothes to the people who are living in Pantang Psychiatric Hospital. They would very much welcome your support. Very often, when families take their loved ones to the institution, they are just left there. They don't get any visitors and there's little hope of them ever leaving. Their families don't provide for them, so it's left to a few people to look after them. And they are struggling.

People taken to the institution include those who have had a breakdown, life in Ghana can be very hard and people struggle to cope.

We can help make their lives more comfortable and respect their dignity by providing clothes. It's very hot in Ghana so cotton T shirts are ideal.

If you can help please pass your T shirts on to a Church Steward and we will arrange a way to collect them. Thank you.

Best sizes to buy/donate would be size 14 and above for woman.

Large for men.

Bright beautiful coloured T shirts would certainly brighten their day!

Any help would be greatly appreciated.

Feel free to add a note too which could be read to our friends in Ghana.

It's a wonderful way to show love to a stranger.





Albrighton Methodist Church

Regular church activities

Cafe Central

Every Thursday 10.00 to 12.00

Excellent coffee!
Meet with friends, old and new.



Sing a Long

2nd and 4th Fridays in the month.
2.00 to 3.30

Join in with "Old Time" songs
and songs from the musicals.

£2 per head.



Monthly Cafe

First Saturday in the month 10.00 to 12.00

With high quality bric-a-brac and
book stalls.



Open Door

First Tuesday in the month
7.30 to 9.00

Wide variety of speakers
ranging from singing, wildlife,
travel logs, health related.....



£2 per head. Speaker usually puts fees to a charity.



Broseley Bible Study (Friday afternoon group)

Read, ponder, share and grow
together at
Broseley Methodist Church

In 2026 we will base our conversations on
the **Methodist Way of Life**.

How can the Bible inspire and encourage us
in our discipleship?

All are welcome, no previous knowledge or
experience needed!

Meeting at 2.30-4pm on

17th April - Tell



For more information
contact Jo on

jokudlacik@gmail.com or 07840 596074

Don't sit at home feeling cold and hungry.

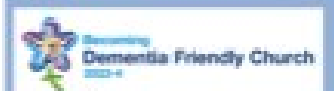
Come and join us at the **Dawley Christian Centre**.
**Our Coffee Bar is open between 9-12:30pm from
Monday - Thursday as a Warm Space.** (We are open
Friday mornings as usual for cooked breakfasts.)

Between 11am—12noon we are offering a tasty
bowl of soup, with a slice of freshly made toast and
a refreshing cup of tea or coffee and **it's all free!**

We can get through this winter together.



Dawley Christian Centre
High Street
Dawley
Telford TF4 2EX



Reaching out together to share
God's amazing faith, hope and love.

Forget me not Group

for people affected by dementia.

Third Thursday of the month at 2:00pm

Come and join us - there's a warm
welcome and a friendly atmosphere.

For more information, or for if you want to have a
conversation about memory difficulties or
dementia, contact Sarah Thorpe on 07982 248049 or
sarah.thorpe121@gmail.com

Coffee Morning at Cartway Methodist Church, Bridgnorth

On the 1st Saturday of each month between 10am –12 midday there is a Coffee Morning at Cartway Methodist Church.

There's going to be a great raffle,.

All are welcome.



Wellington Methodist Church

Are Craft and Chat Group meet on the 2nd & 4th Friday of each month from 10am-11:45am.

There is a small charge but this does include a drink

You are welcome to drop in any time.

Everyone is welcome.



Coffee Mornings at Horsehay

**Every Wednesday:
10.30am - 12.00 noon**

**Join us for tea/coffee,
fellowship and lots of
chat and laughter!**



Ladies' Fellowship at Horsehay Second Tuesday of each month

in the vestry @2.30pm

ALL WELCOME - BRING A FRIEND!

Painting for Pleasure at Horsehay Methodist Church

Informal art groups (no tutor, but lots of chat and helping each other with tips and techniques). Whatever your skill level, if you enjoy drawing and/or painting, why not come and join us? **Thursday and Friday mornings** 10.00 - 12.30. £5.00 per session.

Wool Wanted

If anyone has any spare balls of wool they don't need, can you let Sharon (01952 505108) in the Circuit Office know please?

At Dawley we are making knitted and crocheted blankets for the dementia patients at the Princess Royal Hospital.

The colourful blankets help patients, particularly those with dementia, to find their way back to bed more easily – and also see the edge of the bed more clearly when getting in and out. They also provide a more homely feel to the wards. Thank you.

[Calling all knitters: blankets wanted for patients with dementia – SaTH](#)



Bereavement Cafe

A monthly opportunity to meet and chat with others who have been bereaved, hosted by members of local churches.

Second Monday of each month

2:30-4:00pm

Wellington Methodist Church



Morning everyone,

I hope you're all well.

I wanted to share a quick update regarding our safeguarding contacts within the Connexional Team. As some of you may already be aware, Sue Holder has now retired after 12 years in her role, and Neil Hutchinson has taken over from her.

Neil will be working 21 hours, generally Monday to Wednesday. Steph Bradley remains our main Regional Officer for Safeguarding, working 33 hours across the week. However, both can be contacted out of office hours for any urgent safeguarding matters.

Please update your records with their contact details below:

Neil Hutchinson
Email: hutchinsonn@methodistchurch.org.uk
Mobile: +44 (0) 7384 810901

Steph Bradley
Email: bradleys@methodistchurch.org.uk
Mobile: 07817 808557

If there are any further changes, I will let you know.

Many thanks,

Lauren



Lauren Baxendale

Circuit Safeguarding Officer

Dawley Christian Centre, High Street, Dawley, Telford, TF4 2EX
07904 814741
Safeguarding@telfordmeth.org.uk | www.telfordmeth.org.uk

Circuit 3/18 | Registered Charity 1134372

Please note that I work part-time—my regular working hours are Tuesday to Thursday during office hours. This email and any attachments are confidential. If you are not the intended recipient, please inform me and delete the message.

Safeguarding Reminder: Contact Your Church Safeguarding Officer First

Keeping everyone safe in our church community depends on clear communication and following the right channels.

If you have a safeguarding concern, no matter how small or uncertain, your first point of contact should always be your Church Safeguarding Officer (CSO). They are trained to provide guidance, support, and ensure the right steps are taken in line with Circuit safeguarding policy.

If your church does not have a CSO, or if an issue cannot wait, you can contact:

Lauren Baxendale, Circuit Safeguarding Officer

safeguarding@telfordmeth.org.uk | 07904 814741

Stephanie Bradley, Regional Officer for Safeguarding

bradleys@methodistchurch.org.uk | 07817 808557

Reporting concerns promptly to your CSO helps ensure that any issues are monitored, addressed, and escalated as needed.

Thank you for your vigilance and for helping keep our churches safe, welcoming, and supportive for everyone.

Safeguarding – Dates for Your Diaries!

Calling all those in the Circuit who require Safeguarding training, whether it's a refresher or your first time attending the course (it's the same course for both). There are three upcoming courses in the next few months, so book your place early by emailing me, Lauren Baxendale, Circuit Safeguarding Officer, at safeguarding@telfordmeth.org.uk.

Important Information:

- The refresher interval for safeguarding training is **four years**. This ensures that everyone in key roles receives good quality, up-to-date training.
- If you last attended a course in **2022**, it's time to get yourself booked on another!
- If your role requires the **Advanced Module**, you must **first complete** the **Foundation Module** before progressing.

Options for completing the Foundation Module now include an **online module** that can be done at your own pace. Please see the information in the article below for more details on accessing the course.

Which Safeguarding Training Do I Need to Attend?

Please see the following documents on the [Methodist Church website](#) for details on who needs to attend each module:

[Safeguarding Foundation Module Training: Who needs to attend?](#)

[Safeguarding Advanced Module Training: Who needs to attend?](#)

Many thanks,
Lauren



Lauren Baxendale

Circuit Safeguarding Officer

Dawley Christian Centre, High Street, Dawley, Telford, TF4 2EX
07904 814741
Safeguarding@telfordmeth.org.uk | www.telfordmeth.org.uk

Circuit 3/18 | Registered Charity 1134372

Please note that I work part-time—my regular working hours are Tuesday to Thursday during office hours. This email and any attachments are confidential. If you are not the intended recipient, please inform me and delete the message.

From 1st August 2025 Stephanie Bradley who looks after Advanced Training Course for the West Midlands District has a new email address:

Bradleys@methodist.org.uk

Stephanie's phone number: 07817808557

Dear Friends,

Please see latest link for advanced courses -

We have courses on -

- 9/5/26 Bromsgrove & Redditch Circuit
- 25/7/26 Bromsgrove & Redditch Circuit

www.eventbrite.co.uk/o/stephanie-bradley-81147774823?msocid=39ddb784e41769a00dcea183e5f8680a

Thank you.

Steph

Safeguarding
Young people and vulnerable adults

Safeguarding Training – Now Available Online

The Safeguarding Foundation Course is now available online via [MCBX](#), making it easier than ever for church members to complete their safeguarding training.

This flexible option is ideal for those who find it difficult to attend face-to-face sessions, as the course can be completed at your own pace. MCBX (mcb.theologyx.com) is the Methodist Church's online learning platform, providing access to safeguarding training, supporting materials, and a downloadable certificate on completion.

This online course complements, rather than replaces, face-to-face and participatory training, which continue to be an important part of safeguarding learning.

If you need to complete the Safeguarding Foundation Course, please speak to your Church Safeguarding Officer for further guidance.



Lauren Baxendale

Circuit Safeguarding Officer

Dawley Christian Centre, High Street, Dawley, Telford, TF4 2EX
07904 814741
Safeguarding@telfordmeth.org.uk | www.telfordmeth.org.uk

Hi all

Please see link for online advanced if you have anyone who prefers online ~

<https://www.eventbrite.com/cc/nd-methodist-district-safeguarding-training-4444573?utm-campaign=social&utm-content=creatorshare&utm-medium=discovery&utm-term=odclsxcollection&utm-source=cp&aff=escb>

Dates available:

June 30th 10am & 7pm

Any questions please ask.

Thanks

Stephanie Bradley

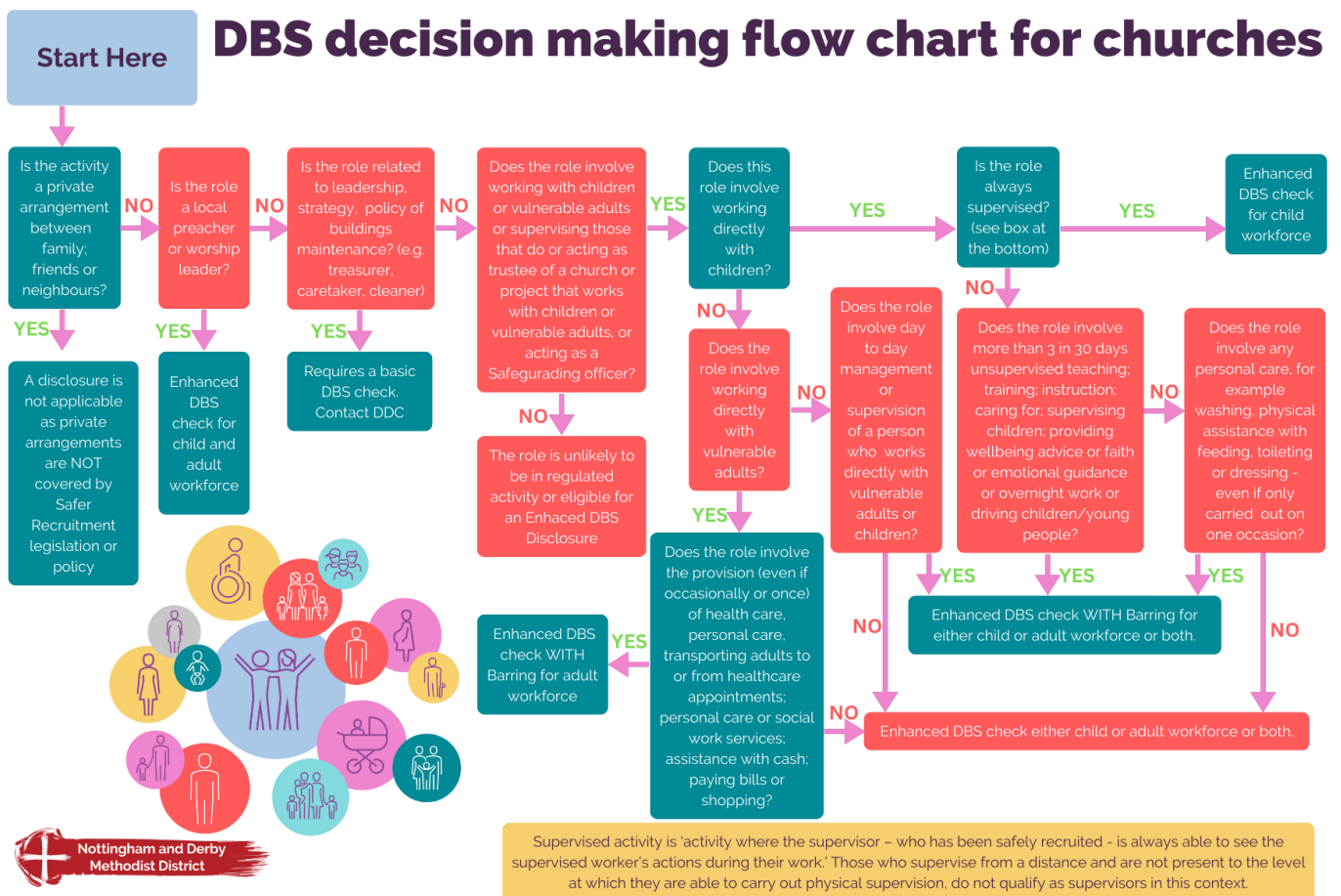
Regional Officer for Safeguarding - North West (West Midlands) |

The Connexional Team

Phone: 020 7467 5296

The **Methodist Church** 

Safeguarding
Young people and vulnerable adults



New Safeguarding Reporting Form

Safeguarding is everyone’s responsibility, and clear communication is key to keeping our community in the Telford Methodist Circuit safe and supported.

A new **Safeguarding Reporting Form** is now in use across the Circuit. Copies have already been shared with your **Church Safeguarding Officers (CSOs)** and should shortly be **appearing on the Circuit website and your church safeguarding noticeboards**.

If you don’t see a copy, or if you have a safeguarding concern, please notify your **designated CSO** as soon as possible. If your church does not have a CSO appointed, you can contact:

Lauren Baxendale, Circuit Safeguarding Officer safeguarding@telfordmeth.org.uk | 07904 814741

Stephanie Bradley, Regional Officer for Safeguarding bradleys@methodistchurch.org.uk | 07817 808557

By reporting concerns promptly using the new safeguarding reporting form, you help ensure that issues are recorded appropriately, responded to quickly, and escalated where necessary.

Thank you for helping us maintain safe and welcoming places for all.



CHURCH SAFEGUARDING CONCERN FORM

(Any person can complete this form)

PLEASE NOTE: If you are worried about contacting us and giving your details, please be assured that we will do what we can to support you. Please telephone your District Safeguarding Officer and they can talk with you about this. Your District Safeguarding Officer can also help you to complete this form or take details over the telephone.

We can arrange pastoral care for you if you would find this helpful. If you would like this, please tick here or contact your District Safeguarding Officer.

Your details

Name:			
Role/Position:			
Tel:			
E-mail:			
Circuit/District:			
Date:		Time:	

Details of the person you are worried about

Name:			
Address:			
	Postcode:		
Tel:			
E-mail:			
Child or Adult:	Approximate age or date of birth if known:		
Role (if applicable):			
Church/Circuit:			

If the person you are worried about is a child or vulnerable adult, it would be helpful if you could give some details about their carer.

Parent/Guardian/Carer

Name:			
Address:			
	Postcode:		
Tel:			
E-mail:			

Please tell us what you are worried about, when this happened and where:

Could you tell us what action has already been taken (if any)?

Please let us know of any other information you think would be helpful for us to know:

PLEASE NOTE:

We may need to share the information you have provided with other agencies to help ensure the person you are referring and others are safe. If the information is passed on to the statutory authorities your name may be disclosed to the person you are referring.

West Midlands District cares about your privacy and your trust is important to us. Our Privacy Notice explains how Local Churches, Circuits and Districts within the Methodist Church in Great Britain collect, use and protect your personal information. It also provides information about your rights (paragraph 9 of the Privacy Notice) and who to contact (paragraph 1 of the Privacy Notice) if you have any questions about how we use your information. You can find our Privacy Notice online (www.tmc.org.uk/about/data-protection/managing-trustees-privacy-notice). Your Circuit Safeguarding Officer will try to deal with any questions as a local point of contact. Alternatively, if viewing this form on line [click here](#) to read our Privacy Notice.

Thank you for completing this form.

The **calling** of the
Methodist Church
is to respond to the
gospel of **God's love**
in **Christ** and to live
out its discipleship in
worship and mission

Our Calling

The **Methodist Church** 