



# Telford Methodist Circuit Newsletter

9th June 2026

## Rev Nik Rogers has written another fabulous book!

### Interrupted By Grace: Words For The Weary Church Year B

Interrupted by Grace: Words for the Weary Church – Year B gathers poems, reflections and prayers shaped by the Church year and by the ordinary experiences that form our lives. From Advent longing to Easter hope, from remembrance and justice to kitchens, hospital corridors and shared tables, these pages invite readers to notice grace arriving unexpectedly.

Written during seasons of ministry, change, love, exhaustion and new beginnings, these reflections do not offer easy answers or polished certainty. Instead they speak gently of compassion, belovedness, mercy and the quiet holiness hidden within everyday life.

Whether followed through the lectionary, used devotionally, read aloud or simply opened where needed, this book offers companionship for weary hearts and a reminder that grace is rarely far away.

Because holiness still appears in ordinary rooms, shared bread, honest conversation and people choosing to love one another despite everything.

The book is available online for £30 for a hardback copy of £25 for a paperback or Nik does have some hard back copies in the Circuit office for £22. Copies of her previous two books are also available.



### Little Things with Kingdom In

Words for the Weary Church  
Year A

Hardback available from the Circuit office for £20



### This is My Body

Words for the Weary Church  
Year C

Hardback available from the Circuit office for £17



All three books are wonderful. You can read and enjoy them for yourself, you could use them as an inspiring resource for local arrangement services or you could give one as a gift!

## Learning Disability Week by Steve Thomas

Learning Disability week takes place from Monday 15<sup>th</sup> June until Sunday 21<sup>st</sup> June. The Theme for 2026 is **Do you see me?** which is about people with a learning disability being seen, heard and valued.



What is Learning Disability Week?

Each year, the third week of June is *Learning Disability Week*. It is when we tell the world what life is like if you have a learning disability.

I have lived with learning difficulties all my life, attending a special school and then a special college course. I have learnt over the years to cope with my both mental and physical disabilities. I don't always understand and communicate with people effectively but people in my local churches and circuit are very good at giving me time to explain things in a way I find best. There are still those who do not understand my disabilities but I have had to learn to only listen to positive comments and not to take everything to heart, and ways to accept criticism. I also have a nephew who is autistic. He has just completed two weeks of work experience in a phone shop and he has found it hard but he has coping methods which he uses which help him a lot.

If you would like to get involved with Learning Disability Week you can:

Donate to Mencap to help them to continue to campaign for people with a learning disability to live life to the full. Phone 0207 696 5425 or email [community.fundraising@mencap.org.uk](mailto:community.fundraising@mencap.org.uk)

Visit a Mencap shop (there is one in Wolverhampton and Shrewsbury)

### Prayer for Learning Disability Week

Loving God,

We thank You for the beautiful diversity of Your creation and for making each person unique, fearfully and wonderfully made. During this Learning Disability Week, we lift up individuals with learning disabilities and neurodivergent minds. Grant them strength in their challenges, joy in their daily victories and the courage to pursue their passions

We pray for our wider communities. Open our eyes and soften our hearts so that we may see the value in every individual, celebrating abilities rather than focusing on limitations. Help us to build truly inclusive, accessible, and welcoming spaces

Bless the families, caregivers and support professionals who advocate for and nurture those they love. Grant them patience, renewed energy and the reassurance that they are not walking this journey alone. Guide us all to live with unconditional love and ensure that every person feels a genuine sense of belonging. Amen

**Refugee Week 2026: The theme for this year is  
'Courage'**

The word courage comes from the Latin *cor*, meaning "heart."

Inspired by the lives and experiences of people seeking sanctuary, Refugee Week 2026 invites us to explore the theme of Courage.

For refugees around the world, courage is often a daily necessity. It is the courage to face unknown journeys, learn new languages, navigate unfamiliar systems, or simply to wake up each morning and step into an uncertain world.

At a time when some seek to divide and blame, Refugee Week 2026 calls us to come together and share the courage to welcome, to stand for what we believe in, and to celebrate culture and community – to be joyful, imagine new possibilities, dream, heal, and connect.

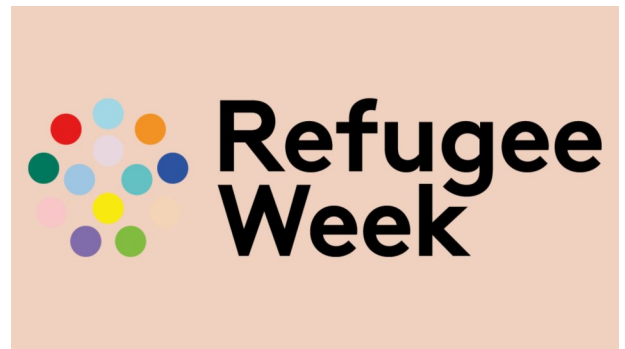
Courage isn't always loud or bold. It can be found in simple acts: opening your door to a neighbour, trying new food, reading a book, or watching a film that changes your view of the world. It can be speaking up, asking for help, sharing your story – or simply having the courage to be yourself.

Through art, stories, and community, we celebrate the courage that lives within us all – and how connection helps it grow.

The text above is taken from the website [refugeeweek.org](http://refugeeweek.org)

Over the past year, we have helped a number of asylum seekers through the food bank at Dawley. They have come from many parts of the world, especially those where there is violence and danger. Many have little or no English and we communicate using the Google Translate service. Some have come to help us on the foodbank, helping to manage our stock of food.

Mark Bestwick





UPDATE!

Telford Methodist Circuit  
International Project 2026  
*together with*  
Ajumako Osedzi Methodist Primary School,  
Ghana



## Please keep fundraising for the Ajumako Osedzi Methodist Primary School in Ghana.

We still need to raise £4850...

Together we can do it!

Please see photos on the next page.

Thank you.



Our aims:

- 1) the provision of an outside canteen
- 2) the renovation and repainting of the classrooms & offices

Can **you** help us raise £6500 by the end of 2026?

Thank you for the £1650 already  
donated!

Telford International Project 2026 – 2027  
With Ajumako Osedzi Methodist Primary School,  
Ghana



**Aim 1:**  
to redecorate the  
classrooms,  
inside and out



**Aim 1:**  
to redecorate the  
classrooms,  
inside and out



**Aim 1:**  
to redecorate the  
classrooms,  
inside and out



**Aim 2:**  
to provide a  
dining area for  
the pupils to eat



**Aim 2:**  
to provide a  
dining area for  
the pupils to eat



# Eco News from the Telford Circuit



“In his hand is the life of every creature and the breath of all mankind.” *Job 12:10*

## 30 DAYS WILD – have you started yet?

**The Wildlife Trusts** are inviting us to get out and notice one wild thing a day over the month of June... I wonder what you have noticed so far?

Basking in the sunshine yesterday on the **Red Valerian** (which, being particularly drought resistant, flowers pink from walls and cracks in the pavement all over my garden) were three **Painted Lady butterflies**. It is amazing to think that these frail creatures have flown (and been blown) all the way from North Africa to rest in my small garden! The Red Valerian is a particular favourite of many butterflies and moths and in previous years my garden has been sure to receive visits from the **Hummingbird hawkmoth**.



## World Environment Day

To watch the official **one minute film** from the United Nations for World Environment Day, click [here](#)

If you are interested in a beautiful and encouraging act of worship entitled **Living Hope for Creation...Joining God's renewal of the earth** which you might use in June for World Environment Day email [jokudlacik@gmail.com](mailto:jokudlacik@gmail.com)

## People's Emergency Briefing

There are still opportunities to see the film and engage with the discussion on **Thursday 9<sup>th</sup> July** at:

**All Saints Church, Wellington** (7pm refreshments, film at 7:30pm)

**St John's Church, Bridgnorth** (7pm)

# A justice seeking church



Some important dates and resources for **June**.  
Could you include these in prayers and worship?



## 5 June World Environment Day [Link](#)

The theme for World Environment Day this year is Climate Change. For a beautiful service 'Living Hope for Creation' to use in your church, please email Jo at [jokudlacik@gmail.com](mailto:jokudlacik@gmail.com)



## 15–21 Refugee Week (21 Sanctuary Sunday)

The theme for Refugee Week 2026 is 'Courage'. For information on events, simple acts and films click [here](#)

Worship resources to mark Refugee Sunday are available from [Faithward](#), [Christian Concern for One World](#), [Church of Sanctuary](#), [The Methodist Church](#).



## 15-21 Learning Disability Week [Link](#)

**Only 26.7%**

of adults with a learning disability are employed yet 86% of unemployed people with a learning disability want a paid job.

**1 in 3**

people with a learning disability spend less than 1 hour outside their home on a typical Saturday.

**Over 2,000**

people with a learning disability and/ or autistic people are currently locked away in mental health hospitals.

Information taken from our 2024 Mencap Manifesto

Resources to start considering making church more exciting for those with Learning Disabilities are available from [Church of Scotland](#), [Methodist Church](#), [URC Wales](#)



## 28 Tax Justice Sunday

An opportunity reflect on tax as a way of showing love, caring for creation and bringing about a fairer, more just society. Resources and speakers available from [Justmoney](#)

The Telford Circuit Team for Justice and Inclusion will be on **Wednesday 3<sup>rd</sup> June at Dawley at 7:30pm** All are very welcome! Contact Jo if you would like more information [jokudlacik@gmail.com](mailto:jokudlacik@gmail.com)



## Farewell service for Rev Roger Dunlop



As you may have heard, Rev Roger Dunlop will be retiring this summer. Roger joined our Circuit five years ago after a virtual tour (during a COVID stationing) and has been a faithful friend and minister to six churches during that time as well as preaching in other churches across the Circuit and several times on Faith Space and leading the recent District Pilgrimage.

**We hope that you will all join us to say 'goodbye' to Roger on 26th July at 4pm at Wellington Methodist Church, where the preacher will be Rev Frances Biseker.**

The service will be followed by refreshments. Contributions of cake (preferably on a plate and cut into slices) would be much appreciated.

We look forward to see you there!

### Pray with us today.

We thank you, our Father and Mother, for teaching us the value of hope in the midst of the storms that accompany our lives. We thank you for being able to share with the poorest people the hunger and thirst for love that gives meaning to life. From our humble condition as your children, we pray that the wars will end. We beg you to perform one of your miracles of love and wisdom so that armies may be transformed into sowers of peace, justice and fraternity for their countries and for our world.

Thank you for allowing us to be resurrected everyday thanks to the water of new life of the gospel. Amen.

Félix A Posada Rojas, Director of CEPALC, Colombia

[methodist.org.uk/prayer](http://methodist.org.uk/prayer).



**Oakengates United Church**



# **Summer Fete**

**Saturday 13<sup>th</sup> June**

**9.30am - 12noon**

**Cakes, Raffle, Books, Games,  
Plants & Re-Furbished Garden Tools,  
Bottle Tombola, Aladdin's Cave, Name the  
Gnome, New & Nearly New**

**Delicious Bacon Butties Toast  
Tea & Coffee**

# TABLE TOP SALE

## DAWLEY CHRISTIAN CENTRE

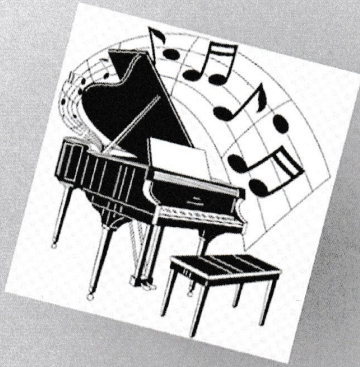
**On Friday  
19<sup>th</sup> June 2026**

**9.00am – 12 noon**

***Come along and pick  
up a bargain.***

***To book a table (only £5)  
please phone 01952 505108***





# MUSICAL MEMORIES!



## Matthew Richards

Returning by popular demand!



*Plays music from the films  
on piano and ukelele.*

**At All Saints Parish Church,  
Wellington.TF11DG**

**Free Concert!**



**SATURDAY  
20<sup>TH</sup> JUNE  
3.30 PM.**

**INTERVAL  
REFRESHMENTS**

To book a ticket, either click on the QR code below,  
call at All Saints Parish Centre,  
or phone 07976 100321.

*Donations in aid of All Saints  
Organ Restoration Fund.*





# HeartSpace

worship for today

**HeartSpace on Sundays**

**10:30am**

**Trinity Centre**

**Upcoming Dates**

**No HeartSpace on Sunday in May**

(You are welcome to join us at Upton Magna Village Hall at 11:00am)

**Sunday 21<sup>st</sup> June**

**Sunday 19<sup>th</sup> July**



**Contact:**

[heartspace@shifnalbenefice.org.uk](mailto:heartspace@shifnalbenefice.org.uk)



Reaching out together to share God's amazing faith, hope and love!



A Prayer Meeting is held at Horsehay Methodist Church on the first Thursday of each month

**For the Autumn/Winter months, the meetings will start at the earlier time of 2.30pm**





# THE FILLING STATION

Haughmond & Wrekin

**22 June 2026**  
**7:15pm for 7:30pm - 9pm**



Haughmond & Wrekin Filling Station,  
Rodington Village Hall, Shrewsbury, SY4 4QS.  
7:30 - 9pm, every 4th Monday.

Join us in June for our Haughmond & Wrekin Filling Station, for worship, teaching, prayer, fellowship & great hospitality!

## Future dates

- 27 July
- 24 August

## Main Speaker

### Laura Lenander

Laura Lenander is the Leader of Telford Minster, a growing Anglican resource church in the centre of Telford. Laura is also an artist and leads on creative ministries for New Wine.



Laura is passionate about helping people encounter Jesus, raising up new leaders, and seeing local communities transformed by the presence and power of God.

More info at...  
[www.thefillingstation.org.uk/station/haughmond-wrekin](http://www.thefillingstation.org.uk/station/haughmond-wrekin)



**All you keen or would be bakers please**

**Join us for Bread Church at  
Dawley Christian Centre**

**On Saturday 27th June between  
9:30-1:30pm (with a light lunch)**

**On Wednesday 24th June  
between 1-3pm**



**Everything will be ready for you to make your  
own bread and it's FREE!**

**Please come along and give it a go.**

# **SALE**

## **Every item!**



## **26th June 2026**

## **from 9 - 12 noon**

## **At Dawley Christian Centre**

**The West Midlands District is inviting everyone to Bloom, their brand new District festival, taking place on Saturday 4 July, 10am–4pm at Trinity Methodist Church in Codsall.**

It's a day for all ages, bringing people together from across the District for worship, workshops, creative activities and conversation.

The theme is *Rooted & Growing*, exploring our Methodist roots and how we continue to grow together in Christ.

There'll be a wide range of things to get involved in throughout the day, so do take a look at their website/scan the QR code on the screen if you'd like to find out more or book a place.

Visit [wmmethodists.org.uk/bloomfestival.html](http://wmmethodists.org.uk/bloomfestival.html) or scan the QR Code to find out more and to book tickets:



The graphic features a large white tree silhouette on the left against a dark green background with faint leaf patterns. In the top right corner, the logo for 'The Methodist Church West Midlands District' is displayed, consisting of a red cross symbol and the text 'The Methodist Church' in red, with 'West Midlands District' in white below it. The main text 'We're going to BLOOM' is centered, with 'We're going to' in red and 'BLOOM' in large white letters. Below this, 'West Midlands District Festival | Sat 4 Jul 2026' is written in white. At the bottom, 'and we can't wait!' is written in red, followed by 'Find out more at [wmmethodists.org.uk/bloomfestival.html](http://wmmethodists.org.uk/bloomfestival.html)' in white.

You can access the full communications pack here: [Bloom Comms Pack](#)

You can find out more about Bloom here: <https://canva.link/bloomfestival>

You can book tickets here: <https://www.tickettailor.com/events/wmmethodists/2125950>

# People's Emergency Briefing

**Wellington,  
Telford & Wrekin**

Film Screening and  
Discussion

Thursday 9<sup>th</sup> July  
7:00 for 7:30pm

All Saint's Church, Church St, Wellington  
TF1 1DG

Supported by Telford & Wrekin Council



[www.nebriefing.org](http://www.nebriefing.org)

# You are invited to attend a screening of The People's Emergency Briefing

An eye-opening film featuring nine leading UK scientists and experts updating us on the latest in the climate and nature crisis and its impacts on everyday national life.

Including:

- extreme weather
- food security
- health
- cost of living

---

Based on the National Emergency Briefing in Westminster, as covered by ITV, C4, and the Times. Followed by a short open discussion about what we can do and what it means locally.

---

Featuring Chris Packham, Deborah Meaden, surprise guests, and a wide range of Brits.

---

Come along and bring a friend.  
Refreshments available from 7pm.  
Film starts at 7:30pm, to be followed by an informal, supportive discussion.  
Limited free parking is available at the church.  
Ample free parking is available nearby.

WELLINGTON METHODIST CHURCH ART GROUP

# ART EXHIBITION

We are holding an Art Exhibition of local artists' work  
Do come along and see the display. Admission is FREE



Friday 17<sup>th</sup> and Saturday 18<sup>th</sup> July

10am - 3pm each day

Tea, coffee and home-made cakes throughout each day

All proceeds from the Art Exhibition, after expenses,  
will be donated to Wellington Methodist Church

Our art exhibition is  
open to all artists,  
all abilities; it's a  
wonderful opportunity  
for art to be enjoyed  
in our community

## Why not exhibit YOUR work?

For entry forms and more details contact  
Barbara Murray on 07592 881108 or  
email Linda Carter on [lindap8080@gmail.com](mailto:lindap8080@gmail.com)  
Entry forms to be returned to Barbara Murray  
by Friday 27th June latest

The Methodist Church 

Wellington Methodist Church New Street, Wellington, Telford TF1 1LU  
UK registered charity no. 1130091

# Calling YOUNG artists

WE ARE  
HOLDING  
AN....

# ART

& Art competition  
for young people

EXHIBITION

The Art Group at Wellington Methodist Church are holding an art competition again for young people (up to age 16). **The theme for your piece of art is**

**SUNFLOWERS**

Prizes will be awarded for each age category, and will be announced at 2.30pm, Saturday 18th July. All pieces will be displayed in the exhibition.

To enter, please complete and return the tear-off section of this letter.

Friday 17<sup>th</sup> and Saturday 18<sup>th</sup> July 2026

For more details contact Barbara Murray on  
07592 881108 or email [barbaraqsc@gmail.com](mailto:barbaraqsc@gmail.com)

To exhibit your work please complete the tear-off section of this entry form with child's name, parent/guardian's contact details and return to the Methodist Church by Friday 26th June.

One piece of art per young person (up to and including age 16), **MAXIMUM SIZE: A3 (297 x 420mm), UNFRAMED, to be delivered to the Church by Tuesday 7th July at the latest, between 11am - 12pm.**

Please write title (or description) of picture, name and age of artist, in capital letters on reverse of picture.

Prizes and certificates can be collected as they are announced at 2.30pm on Saturday 18th July.

Pictures can be collected when the exhibition closes on Saturday between 3pm - 3.30pm. Please note that while every care will be taken to ensure the safety of all artwork in the exhibition, all works are displayed at the owners own risk.

.....  
First name ..... Surname ..... Age .....

Telephone ..... Email .....

Title (or description) of picture .....

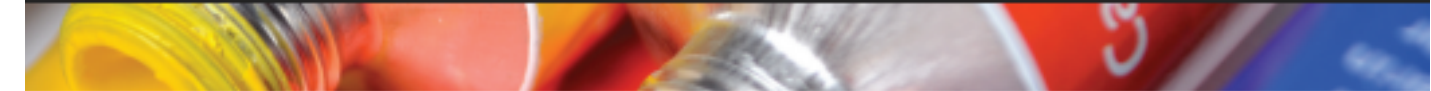
Personal information you give on this form will be treated in the strictest confidence and will not be transferred to any digital database, except for your email address which may be used only to contact you personally with any information concerning Wellington Methodist Church Art Group, if you tick the box below giving the Art Group permission to contact you via email in the future. This form will be retained by WMC Art Group until the end of the exhibition 2026 and then destroyed. If you wish to stop receiving emails from WMC Art Group please contact Barbara Murray on 07592 881108 or email [barbaraqsc@gmail.com](mailto:barbaraqsc@gmail.com)

Please tick box to give Wellington Methodist Church Art Group permission to contact you via email.

I understand that I exhibit my artwork at my own risk.

The Methodist Church   
UK registered charity no. 1130091

Signature of parent/guardian ..... Date .....



Our art exhibition is open to all artists,  
all abilities; it's a wonderful opportunity  
for art to be enjoyed in our community

# ART EXHIBITION 2026

Dear Artist

Once again Wellington Methodist Church Art Group is planning to hold an Art Exhibition and this year it will be held at the Church on **Friday 17th and Saturday 18th July 2026 from 10am to 3pm each day**. We hope we can interest you in exhibiting some of your work. Pieces can be 2D or 3D, in any media including photography.

To exhibit your work **please return an Entry Form to the Methodist Church by Friday 26th June** at the latest, so that we can produce the catalogue. No late entries will be accepted. If you would like us to send you an Entry Form please email **Linda Carter on lindap8080@gmail.com**

As with all exhibitions, and especially with all the safety precautions we continue to undertake, we are asking artists for a **minimum entry fee per piece of £5** to exhibit. This will be collected when artwork is handed in. **Please deliver your artwork to the Church on Thursday 16th July, from 10.30am to 12pm and attach a label to the back of each piece of artwork with your name and title of piece.** You can display up to a maximum of three works, none of which should have been displayed before in one of our exhibitions. If you wish to sell your work we ask for prices to be a minimum of £20. If you prefer not to sell your work, only one piece can be exhibited as not for sale. Limited hanging space may restrict the number of artworks exhibited. We therefore reserve the right to display less artworks in the exhibition than submitted. It may be necessary to display some items on tables.

Maximum size (including frame): 24" x 20", 60cm x 50cm, pictures need to be framed and fitted with D rings and cord. Please check that when hung the **cord is not visible above the top of the frame**. Display labels will be produced to go with your work. A commission of 20% will be charged on any works sold to help cover our costs. Please see Terms and Conditions on back of this letter.

**Work must be collected when the exhibition closes on the Saturday between 3pm - 3.30pm or only by prior arrangement on Tuesday 21st July.** Please note that while every care will be taken to ensure the safety of all work in the exhibition, all work is displayed at the owners' own risk. Artists are strongly advised to insure their own works as the Church only covers public liability insurance.

We appreciate offers of help with stewarding each day of the exhibition, greeting visitors and being available for enquiries and sales. Refreshments will be served on both days and we would be grateful for any donations of biscuits, small cakes or cakes to slice which can be sold. Please indicate on the Entry Form if you are able to help or contact me directly.

If you have any queries, please don't hesitate to get in touch with me. We look forward to hearing from you. This will be our 16th Art Exhibition. Our past exhibitions have been a great success and with your support, this one will be as well.

**Barbara Murray**  
On behalf of Wellington Methodist Church

#### WELLINGTON METHODIST CHURCH ART GROUP

CONTACT: Barbara Murray  
New Street, Wellington, Telford TF1 1LU  
Telephone 07592 881108  
Email [barbaraqsc@gmail.com](mailto:barbaraqsc@gmail.com)  
[www.wellingtonmethodist.org.uk](http://www.wellingtonmethodist.org.uk)

Find us on Facebook 

All proceeds from the Art Exhibition, after expenses,  
will be donated to Wellington Methodist Church

  
The **Methodist Church**  
UK registered charity no. 1130091

# ART EXHIBITION 2026

Friday 17<sup>th</sup> and Saturday 18<sup>th</sup> July  
10am to 3pm

## Terms and Conditions

The exhibition is open to all artists local to Telford.

To exhibit your work, please return this Entry Form to the Methodist Church by Friday 26th June.

Please deliver your artwork to the Church on Thursday 16th July, from 10.30am to 12pm. We are asking adult artists for a **minimum entry fee per piece of £5** to exhibit, as handed in.

All work must be unwrapped on delivery, with any packaging taken away.

All artwork is displayed at the owners' own risk.

Work must be collected when the exhibition closes on the Saturday between 3pm - 3.30pm or only by prior arrangement on Tuesday 21st July.

A maximum of three works may be submitted, none of which should have been displayed before in one of our exhibitions. If you wish to sell your work we ask for prices to be a minimum of £20. If you prefer not to sell your work, only one piece can be exhibited as not for sale.

Only original artwork can be entered; artwork created from a kit will not be accepted. If the piece is a copy of another artists work this is acceptable but the title must include a reference to the original artist as After Artist's Name.

Maximum size (including frame): 24" x 20", 60cm x 50cm, pictures need to be framed and fitted with D rings and cord. When hung the **cord must not be visible above the top of the frame**. Alternatively, pictures can be supplied mounted, if covered with cellophane.

Limited hanging space may restrict the number of artworks that can be exhibited. We therefore reserve the right to display less artworks than submitted. Please note that Wellington Methodist Church have the option to exclude works from the exhibition which might offend, and please note that photography will be allowed in the exhibition but visitors will be made aware that all images are subject to copyright.

A 20% commission will be taken on all work which is sold to help cover costs. Payment to artists for sold works will be by cheque.

If you would like to donate any of your greetings cards to sell for Church funds, please hand in when delivering your artwork. Unfortunately we are unable to sell cards on behalf of an artist.

## Data Protection

Personal information you give on your Entry form will be treated in the strictest confidence and will not be transferred to any digital database, except for your email address which may be used only to contact you personally with any information concerning Wellington Methodist Church Art Group, if you tick the box on your Entry form giving the Art Group permission to contact you via email in the future. Your Entry form will be retained by WMC Art Group until the end of the exhibition 2026 and then destroyed. If you wish to stop receiving emails from WMC Art Group please contact Barbara Murray on 07592 881108 or email [barbaraqsc@gmail.com](mailto:barbaraqsc@gmail.com)

**Please return your ENTRY FORM to Barbara Murray by Friday 26th June latest**

**WELLINGTON METHODIST CHURCH ART GROUP** New Street, Wellington, Telford TF1 1LU

Telephone 07592 881108 Email [barbaraqsc@gmail.com](mailto:barbaraqsc@gmail.com)

[www.wellingtonmethodist.org.uk](http://www.wellingtonmethodist.org.uk)

Find us on Facebook 

All proceeds from the Art Exhibition, after expenses, will be donated to Wellington Methodist Church

The **Methodist Church**   
UK registered charity no. 1130091

WELLINGTON METHODIST CHURCH  
 Minister: Rev. Roger Dunlop

# ART EXHIBITION 2026

## ENTRY FORM

To exhibit your work, please return this Entry Form to the Methodist Church by Friday 26th June.

Please deliver your artwork to the Church on Thursday 16th July, from 10.30am to 12pm.

Work must be collected when the exhibition closes on the Saturday between 3pm - 3.30pm or only by prior arrangement on Tuesday 21st July.

Friday 17<sup>th</sup> and Saturday 18<sup>th</sup> July  
10am to 3pm

First name ..... Surname .....

Please note, if your work has sold, cheque will be made payable to you, as your name above, and your name will appear in the catalogue as this unless you request otherwise

Telephone ..... Email .....

Title (or description) of work *Please list in alphabetical order, 25 characters maximum	Media	Approximate size (cm)	Sale price/ Not for sale*

\*Please note, only one piece can be exhibited as not for sale

**IMPORTANT: Please attach a label to the back of each artwork with title and your name**

See exhibition letter for Terms and Conditions, and information regarding Data Protection

Please tick box to give Wellington Methodist Church Art Group permission to contact you via email

I understand that:

- Adult artists are asked for a minimum entry fee per piece of their artwork of £5 to exhibit
- I exhibit my work at my own risk and that a 20% commission will be taken on all work which is sold
- I give permission for a photograph of my work to appear in WMC Art Exhibition publicity and their web site

Artist's signature ..... Date.....

Please place a tick in the boxes below if you are able to help with stewarding or refreshments.

Donation of cakes or biscuits?				
Friday 17th July steward/refreshments	10am - 12pm	12 - 1pm	1 - 3pm	
Saturday 18th July steward/refreshments	10am - 12pm	12 - 1pm	1 - 3pm	

Please return your ENTRY FORM to Barbara Murray by Friday 26th June latest

WELLINGTON METHODIST CHURCH ART GROUP New Street, Wellington, Telford TF1 1LU

Telephone 07592 881108 Email barbaraqsc@gmail.com

[www.wellingtonmethodist.org.uk](http://www.wellingtonmethodist.org.uk)

UK registered charity no. 1130091

All proceeds from the Art Exhibition, after expenses, will be donated to Wellington Methodist Church.



THE  
BOYS'  
BRIGADE



> the adventure begins here

# CRAFT

# FAYRE



## TABLETOP SALE



BOOKS, DVDS AND JIGSAWS



AT

WELLINGTON  
METHODIST CHURCH

TF1 1LU



4<sup>TH</sup> JULY 2026

10AM - 12 NOON

TABLE COST £10

♥ phone Rosemary on 07496 556606 to book ♥

# Motown

## Daytime Disco

Also featuring hits from the '50s - '80s



Only  
**£5.00**

Raising funds to  
support  
local older people

**Saturday 25 July**

**1.00 - 4.00pm**

**Hadley Community Centre  
30 High St, Hadley TF1 5NL**

For more info contact:

t: 01743 233 123

e: [fundraising@ageukstw.org.uk](mailto:fundraising@ageukstw.org.uk)



★ Light refreshments

★ Themed mocktails

★ Raffle

Supported by Local Councillor Julie Kaur

## Working on Worship Course

A 4 week series aimed at exploring Local Arrangements, creative worship and intergenerational worship.

Working out Worship is a series to help anyone who is looking to resource worship in their Local Church. For lay people, or ordained. For youth workers, Sunday school leaders, worship leaders, stewards, local preachers, ministers or those who are interested in starting to get involved in

leading worship. Registration for one session is only for one session, please register for multiple sessions if you wish to attend more than one.

Working out Worship Summer 2026 - Session 2

Date: 11th June • 19:00

[https://www.eventbrite.co.uk/e/working-out-worship-spring-2026-session-1-tickets-1976734883248?aff=eivtefrnd&utm\\_share\\_source=listing\\_android&sg=dbf960d64fc839500ff0714e16d5e40c7d1f68ade8accf2bffd41c858acba3dbf519cf8b90e516546153b9975ec5630824093dd83e88b6d2017a1b880ec388937822fa814a4eac4596a7c49b](https://www.eventbrite.co.uk/e/working-out-worship-spring-2026-session-1-tickets-1976734883248?aff=eivtefrnd&utm_share_source=listing_android&sg=dbf960d64fc839500ff0714e16d5e40c7d1f68ade8accf2bffd41c858acba3dbf519cf8b90e516546153b9975ec5630824093dd83e88b6d2017a1b880ec388937822fa814a4eac4596a7c49b)



### Garden Volunteers Wanted

Do you enjoy gardening and have a couple of hours a week spare?

If so, we'd love you to join a small team to help us maintain our sensory garden at the back of Dawley Christian Centre Methodist Church, situated in the middle of the Dawley High Street.

For more details please call Sharon on 01952 505108.

Thank you.



## Circuit Prayer Space

**Circuit Prayer Space on a Monday morning at 8:30am.**

Val Smith is inviting you to a scheduled Zoom meeting.

**Topic: Circuit Prayer Meeting**

Time: This is a recurring meeting Meet anytime

Join Zoom meeting:

[https://zoom.us/j/96716434790?  
pwd=RTZZa210Q1ZOWCtLTWk3NHoyWDVIQT09](https://zoom.us/j/96716434790?pwd=RTZZa210Q1ZOWCtLTWk3NHoyWDVIQT09)

Meeting ID: 967 1643 4790

Passcode: 355690

**God loves you**  
**unconditionally, no strings attached.**  
**That's the good news.**

**Faith Space - An online service for all**

**Starts at 6:30pm on the link below.**

Weekly zoom services for anyone and everyone wherever in the world you are!

Join Zoom meeting:

[https://zoom.us/j/95651019665?  
pwd=bGgyVEdvQ0cvNDRpWm5HTVB0UDRmdz09](https://zoom.us/j/95651019665?pwd=bGgyVEdvQ0cvNDRpWm5HTVB0UDRmdz09)

Meeting ID: 956 5101 9665

Passcode: 395669

God bless you all and see you soon!



## Bible Studies in the Circuit

### Circuit Online Bible Study

Bible study will resume from Monday 18th May at 1:30pm.

Please click on the link below.

<https://zoom.us/j/95651019665?pwd=bGgyVEdvQ0cvNDRpWm5HTVB0UDRmdz09>

Please join us as we work our way through Matthew. Matthew was very good at keeping records and his account of spending time with Jesus and growing as a Christian himself, is very inspiring. All are welcome.

Meeting ID: 956 5101 9665

Passcode: 395669

**Admaston** meet on the 2nd Tuesday of the month between 10-11:30am.

They currently meet in the home of one of the church family but if the numbers increased they would be happy to transfer the bible study to church.

**Cartway, Bridgnorth** has 3 bibles study groups.

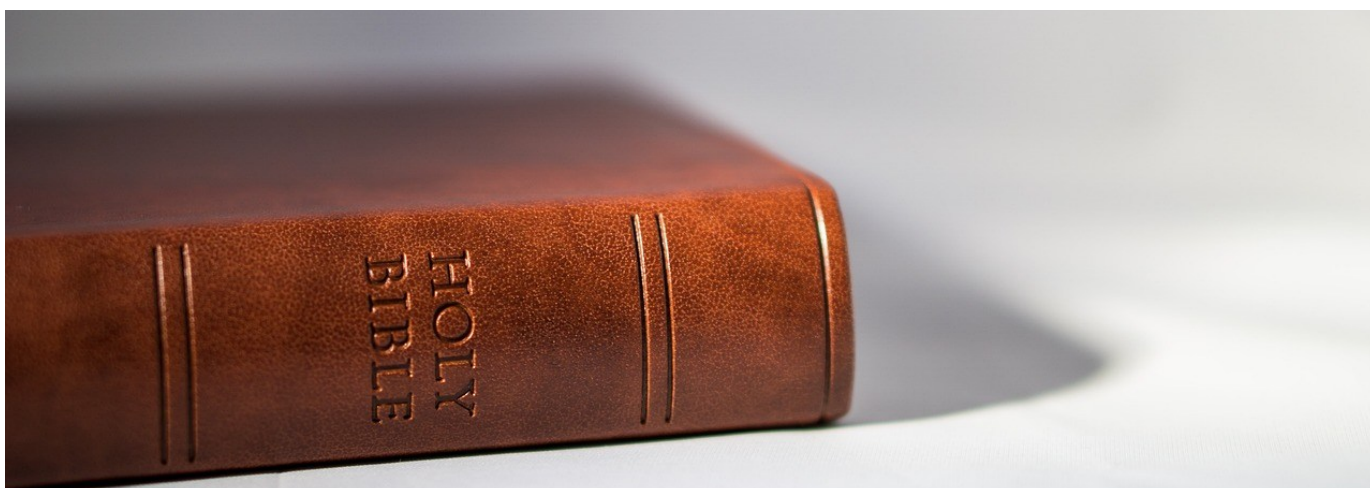
Shambles Group meet on 2nd Monday of the month at 10:30am

Orchard House Group meet on 3rd Monday in the month at 10:30am

Greenfields Group meet 3rd Tuesday in the month at 2pm.

**Dawley** - Bible study group meets for two 5-6 weekly sessions each year. One during Lent the other during Advent.

**Dunwell** - Has a bible study before church service each Sunday (Service starts at 10am)



## Spiritual Abuse Awareness training dates 2026



**Spiritual Abuse Awareness Training**

Developed by the Methodist Church Safeguarding Team, Learning Network and Survivors Group in conjunction with Dr Lisa Oakley, Chester University & Thirtyone.eight

Course overview:

- What is spiritual abuse?
- What is the impact of the experience
- How to build healthy cultures

10.30 – 15.30

29th January 2026

4th June 2026

24th September 2026

19th November 2026

on Zoom

To book your place, please follow this link:  
<https://imethodist-spiritual-abuse-training.eventbrite.co.uk>

For more information please contact Christine Kennedy ([ckennedy@methodistchurch.org.uk](mailto:ckennedy@methodistchurch.org.uk))  
Bridget Down ([bridget@methodistchurch.org.uk](mailto:bridget@methodistchurch.org.uk)) or David Knight ([davidk@methodistchurch.org.uk](mailto:davidk@methodistchurch.org.uk))

The Methodist Church

We are pleased to announce 4 new dates for the Spiritual Abuse Awareness Training in 2026:  
29 January

4 June

24 September and

19 November

All the sessions are on Thursdays, from 10.30 – 15.30

To book, please use the Eventbrite link: [Book on Eventbrite for Spiritual Abuse Awareness training](https://imethodist-spiritual-abuse-training.eventbrite.co.uk)

See the [Spiritual Abuse - The Methodist Church](https://www.methodistchurch.org.uk/spiritual-abuse) webpage for further details.

Download a poster [Spiritual Abuse Awareness training poster](#)

**Please get in touch if you have something to share.**

**Email:**

**[circuitsupport@telfordmeth.org.uk](mailto:circuitsupport@telfordmeth.org.uk)**

**or phone 01952 505108**



**Can you provide a plain cotton T Shirt (both for men and woman) to someone in a mental health institution (Pantang Psychiatric Hospital) in Ghana?**

The newly inaugurated Sussanah Wesley Mission Auxiliary (SUWMA) within the congregation of Dunwell Methodist Church, Ketley are making their Easter project to provide clothes to the people who are living in Pantang Psychiatric Hospital. They would very much welcome your support. Very often, when families take their loved ones to the institution, they are just left there. They don't get any visitors and there's little hope of them ever leaving. Their families don't provide for them, so it's left to a few people to look after them. And they are struggling.

People taken to the institution include those who have had a breakdown, life in Ghana can be very hard and people struggle to cope.

**We can help make their lives more comfortable and respect their dignity by providing clothes. It's very hot in Ghana so cotton T shirts are ideal.**

If you can help please pass your T shirts on to a Church Steward and we will arrange a way to collect them. Thank you.

Best sizes to buy/donate would be size 14 and above for woman.

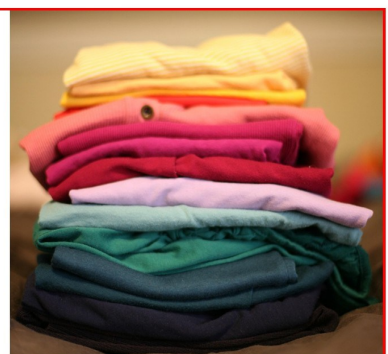
Large for men.

Bright beautiful coloured T shirts would certainly brighten their day!

Any help would be greatly appreciated.

Feel free to add a note too which could be read to our friends in Ghana.

It's a wonderful way to show love to a stranger.





**Albrighton  
Methodist Church**  
Regular church activities

**Cafe Central**

Every Thursday 10.00 to 12.00

Excellent coffee!  
Meet with friends, old and new.



**Monthly Cafe**

First Saturday in the month 10.00 to 12.00

With high quality bric-a-brac and  
book stalls.



**Open Door**

First Tuesday in the month  
7.30 to 9.00

Wide variety of speakers  
ranging from singing, wildlife,  
travel logs, health related.....



£2 per head. Speaker usually puts fees to a charity.



**UPDATE!**



Telford Methodist Circuit  
International Project 2026  
*together with*

Ajumako Osedzi Methodist Primary School,  
Ghana

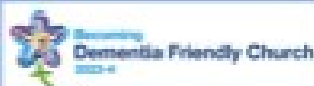


Our aims:

- 1) the provision of an outside canteen
- 2) the renovation and repainting of the classrooms & offices

**Can you help us raise £6500 by the end of 2026?**

**Thank you for the £1650 already  
donated!**



Bringing us together to share  
God's amazing faith, hope and love.

**Forget me not Group**  
for people affected by dementia.  
**Third Thursday of  
the month at 2:00pm**  
Come and join us - there's a warm  
welcome and a friendly atmosphere.

For more information, or for if you want to have a  
conversation about memory difficulties or  
dementia, contact Sarah Thorpe on 07982 248949 or  
sarah.thorpe121@gmail.com

**You're invited to join us ...**

**1<sup>st</sup> Wellington Boys' Brigade and Girls' Association**

Where: Wellington Methodist Church, TF1 1LU

When: Wednesday evening 5:30 to 7pm

Who: Boys & girls, ages 5 to 11

Why: **Join the Adventure!**

What: Lots of things ...

**Play Games – Craft activities**  
**Learn new Things - Meet new friends**  
**Learn about the Christian Faith**  
**Table Tennis – Having fun**  
**Music – Competitions – Badgework**  
**Baking – Football – Dodgeball**



Call or Whatsapp  
Company Leader  
Alastair Batrick  
07977 508723

## **Coffee Morning at Cartway Methodist Church, Bridgnorth**

On the 1st Saturday of each month between 10am –12 midday there is a Coffee Morning at Cartway Methodist Church.

There's going to be a great raffle,.

All are welcome.



## **Wellington Methodist Church**

Are Craft and Chat Group meet on the 2nd & 4th Friday of each month from 10am-11:45am.

There is a small charge but this does include a drink

You are welcome to drop in any time.

Everyone is welcome.



# **Coffee Mornings at Horsehay**

**Every Wednesday:  
10.30am - 12.00 noon**

**Join us for tea/coffee,  
fellowship and lots of  
chat and laughter!**



## Ladies' Fellowship at Horsehay Second Tuesday of each month

in the vestry @2.30pm

**ALL WELCOME - BRING A FRIEND!**

## Painting for Pleasure at Horsehay Methodist Church

Informal art groups (no tutor, but lots of chat and helping each other with tips and techniques). Whatever your skill level, if you enjoy drawing and/or painting, why not come and join us? **Thursday and Friday mornings** 10.00 - 12.30. £5.00 per session.

### Wool Wanted

If anyone has any spare balls of wool they don't need, can you let Sharon (01952 505108) in the Circuit Office know please?

At Dawley we are making knitted and crocheted blankets for the dementia patients at the Princess Royal Hospital.

The colourful blankets help patients, particularly those with dementia, to find their way back to bed more easily – and also see the edge of the bed more clearly when getting in and out. They also provide a more homely feel to the wards. Thank you.

[Calling all knitters: blankets wanted for patients with dementia – SaTH](#)



## Bereavement Cafe

A monthly opportunity to meet and chat with others who have been bereaved, hosted by members of local churches.

Second Monday of each month

2:30-4:00pm

Wellington Methodist Church



Morning everyone,

I hope you're all well.

I wanted to share a quick update regarding our safeguarding contacts within the Connexional Team. As some of you may already be aware, Sue Holder has now retired after 12 years in her role, and Neil Hutchinson has taken over from her.

Neil will be working 21 hours, generally Monday to Wednesday. Steph Bradley remains our main Regional Officer for Safeguarding, working 33 hours across the week. However, both can be contacted out of office hours for any urgent safeguarding matters.

Please update your records with their contact details below:

Neil Hutchinson  
Email: [hutchinsonn@methodistchurch.org.uk](mailto:hutchinsonn@methodistchurch.org.uk)  
Mobile: +44 (0) 7384 810901

Steph Bradley  
Email: [bradleys@methodistchurch.org.uk](mailto:bradleys@methodistchurch.org.uk)  
Mobile: 07817 808557

If there are any further changes, I will let you know.

Many thanks,

Lauren



## **Lauren Baxendale**

Circuit Safeguarding Officer

Dawley Christian Centre, High Street, Dawley, Telford, TF4 2EX  
07904 814741  
[Safeguarding@telfordmeth.org.uk](mailto:Safeguarding@telfordmeth.org.uk) | [www.telfordmeth.org.uk](http://www.telfordmeth.org.uk)

Circuit 3/18 | Registered Charity 1134372

*Please note that I work part-time—my regular working hours are Tuesday to Thursday during office hours. This email and any attachments are confidential. If you are not the intended recipient, please inform me and delete the message.*

## Safeguarding Reminder: Contact Your Church Safeguarding Officer First

Keeping everyone safe in our church community depends on clear communication and following the right channels.

If you have a safeguarding concern, no matter how small or uncertain, your first point of contact should always be your Church Safeguarding Officer (CSO). They are trained to provide guidance, support, and ensure the right steps are taken in line with Circuit safeguarding policy.

If your church does not have a CSO, or if an issue cannot wait, you can contact:

**Lauren Baxendale, Circuit Safeguarding Officer**

[safeguarding@telfordmeth.org.uk](mailto:safeguarding@telfordmeth.org.uk) | 07904 814741

**Stephanie Bradley, Regional Officer for Safeguarding**

[bradleys@methodistchurch.org.uk](mailto:bradleys@methodistchurch.org.uk) | 07817 808557

Reporting concerns promptly to your CSO helps ensure that any issues are monitored, addressed, and escalated as needed.

Thank you for your vigilance and for helping keep our churches safe, welcoming, and supportive for everyone.

## Safeguarding – Dates for Your Diaries!

Calling all those in the Circuit who require Safeguarding training, whether it's a refresher or your first time attending the course (it's the same course for both). There are three upcoming courses in the next few months, so book your place early by emailing me, Lauren Baxendale, Circuit Safeguarding Officer, at [safeguarding@telfordmeth.org.uk](mailto:safeguarding@telfordmeth.org.uk).

### Important Information:

- The refresher interval for safeguarding training is **four years**. This ensures that everyone in key roles receives good quality, up-to-date training.
- If you last attended a course in **2022**, it's time to get yourself booked on another!
- If your role requires the **Advanced Module**, you must **first complete** the **Foundation Module** before progressing.

Options for completing the Foundation Module now include an **online module** that can be done at your own pace. Please see the information in the article below for more details on accessing the course.

### Which Safeguarding Training Do I Need to Attend?

Please see the following documents on the [Methodist Church website](#) for details on who needs to attend each module:

[Safeguarding Foundation Module Training: Who needs to attend?](#)

[Safeguarding Advanced Module Training: Who needs to attend?](#)

Many thanks,  
Lauren



**Lauren Baxendale**

Circuit Safeguarding Officer

Dawley Christian Centre, High Street, Dawley, Telford, TF4 2EX  
07904 814741  
[Safeguarding@telfordmeth.org.uk](mailto:Safeguarding@telfordmeth.org.uk) | [www.telfordmeth.org.uk](http://www.telfordmeth.org.uk)

Circuit 3/18 | Registered Charity 1134372

Please note that I work part-time—my regular working hours are Tuesday to Thursday during office hours. This email and any attachments are confidential. If you are not the intended recipient, please inform me and delete the message.

From 1st August 2025 Stephanie Bradley who looks after Advanced Training Course for the West Midlands District has a new email address:

[Bradleys@methodist.org.uk](mailto:Bradleys@methodist.org.uk)

Stephanie's phone number: 07817808557

Dear Friends,

Please see latest link for advanced courses -

We have courses on -

- 25/7/26 Bromsgrove & Redditch Circuit

[www.eventbrite.co.uk/o/stephanie-bradley-81147774823?msocid=39ddb784e41769a00dcea183e5f8680a](https://www.eventbrite.co.uk/o/stephanie-bradley-81147774823?msocid=39ddb784e41769a00dcea183e5f8680a)

Thank you.

Steph

**Safeguarding**  
Young people and vulnerable adults

## Safeguarding Training – Now Available Online

The Safeguarding Foundation Course is now available online via [MCBX](#), making it easier than ever for church members to complete their safeguarding training.

This flexible option is ideal for those who find it difficult to attend face-to-face sessions, as the course can be completed at your own pace. MCBX ([mcb.theologyx.com](http://mcb.theologyx.com)) is the Methodist Church's online learning platform, providing access to safeguarding training, supporting materials, and a downloadable certificate on completion.

This online course complements, rather than replaces, face-to-face and participatory training, which continue to be an important part of safeguarding learning.

If you need to complete the Safeguarding Foundation Course, please speak to your Church Safeguarding Officer for further guidance.



**Lauren Baxendale**

Circuit Safeguarding Officer

Dawley Christian Centre, High Street, Dawley, Telford, TF4 2EX  
07904 814741  
[Safeguarding@telfordmeth.org.uk](mailto:Safeguarding@telfordmeth.org.uk) | [www.telfordmeth.org.uk](http://www.telfordmeth.org.uk)

Hi all

Please see link for online advanced if you have anyone who prefers online ~

<https://www.eventbrite.com/cc/nd-methodist-district-safeguarding-training-4444573?utm-campaign=social&utm-content=creatorshare&utm-medium=discovery&utm-term=odclsxcollection&utm-source=cp&aff=escb>

Dates available:

June 30th 10am & 7pm

Any questions please ask.

Thanks

**Stephanie Bradley**

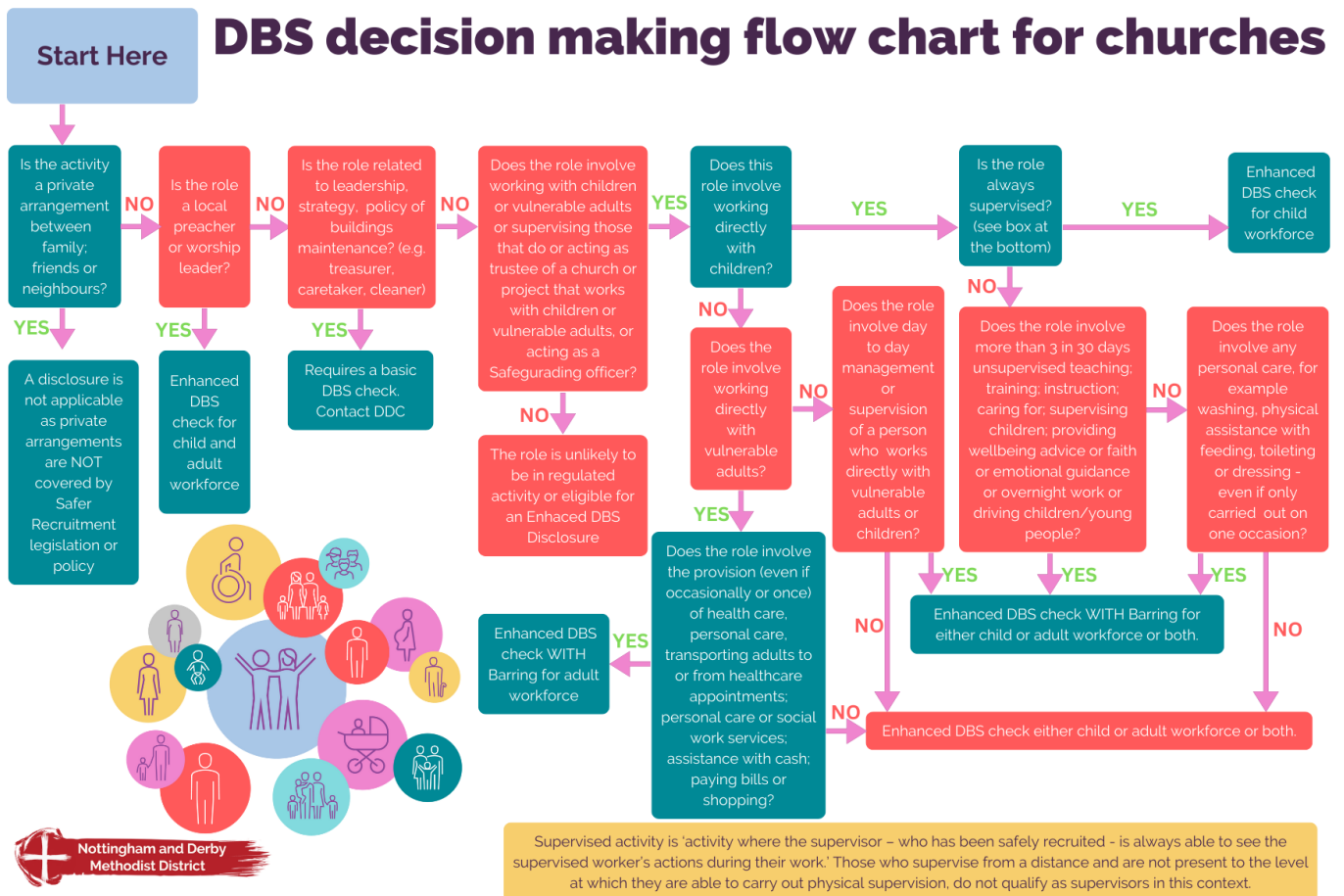
Regional Officer for Safeguarding - North West (West Midlands) |

The Connexional Team

Phone: 020 7467 5296

The **Methodist Church** 

**Safeguarding**  
Young people and vulnerable adults



## New Safeguarding Reporting Form

Safeguarding is everyone’s responsibility, and clear communication is key to keeping our community in the Telford Methodist Circuit safe and supported.

A new **Safeguarding Reporting Form** is now in use across the Circuit. Copies have already been shared with your **Church Safeguarding Officers (CSOs)** and should shortly be **appearing on the Circuit website and your church safeguarding noticeboards**.

If you don’t see a copy, or if you have a safeguarding concern, please notify your **designated CSO** as soon as possible. If your church does not have a CSO appointed, you can contact:

**Lauren Baxendale**, Circuit Safeguarding Officer [safeguarding@telfordmeth.org.uk](mailto:safeguarding@telfordmeth.org.uk) | 07904 814741

**Stephanie Bradley**, Regional Officer for Safeguarding [bradleys@methodistchurch.org.uk](mailto:bradleys@methodistchurch.org.uk) | 07817 808557

By reporting concerns promptly using the new safeguarding reporting form, you help ensure that issues are recorded appropriately, responded to quickly, and escalated where necessary.

Thank you for helping us maintain safe and welcoming places for all.



### CHURCH SAFEGUARDING CONCERN FORM

(Any person can complete this form)

**PLEASE NOTE:** If you are worried about contacting us and giving your details, please be assured that we will do what we can to support you. Please telephone your District Safeguarding Officer and they can talk with you about this. Your District Safeguarding Officer can also help you to complete this form or take details over the telephone.

We can arrange pastoral care for you if you would find this helpful. If you would like this, please tick here  or contact your District Safeguarding Officer.

#### Your details

Name:			
Role/Position:			
Tel:			
E-mail:			
Circuit/District:			
Date:		Time:	

#### Details of the person you are worried about

Name:			
Address:			
	Postcode:		
Tel:			
E-mail:			
Child or Adult:	Approximate age or date of birth if known:		
Role (if applicable):			
Church/Circuit:			

If the person you are worried about is a child or vulnerable adult, it would be helpful if you could give some details about their carer.

#### Parent/Guardian/Carer

Name:			
Address:			
	Postcode:		
Tel:			
E-mail:			

Please tell us what you are worried about, when this happened and where:

Could you tell us what action has already been taken (if any)?

Please let us know of any other information you think would be helpful for us to know:

#### PLEASE NOTE:

We may need to share the information you have provided with other agencies to help ensure the person you are referring and others are safe. If the information is passed on to the statutory authorities your name may be disclosed to the person you are referring.

West Midlands District cares about your privacy and your trust is important to us. Our Privacy Notice explains how Local Churches, Circuits and Districts within the Methodist Church in Great Britain collect, use and protect your personal information. It also provides information about your rights (paragraph 9 of the Privacy Notice) and who to contact (paragraph 1 of the Privacy Notice) if you have any questions about how we use your information. You can find our Privacy Notice online ([www.tmcpc.org.uk/about/data-protection/managing-trustees-privacy-notice](http://www.tmcpc.org.uk/about/data-protection/managing-trustees-privacy-notice)). Your Circuit Safeguarding Officer will try to deal with any questions as a local point of contact. Alternatively, if viewing this form on line [click here](#) to read our Privacy Notice.

Thank you for completing this form.

The **calling** of the  
**Methodist Church**  
is to respond to the  
gospel of **God's love**  
in **Christ** and to live  
out its discipleship in  
worship and mission

Our Calling

The **Methodist Church** 