



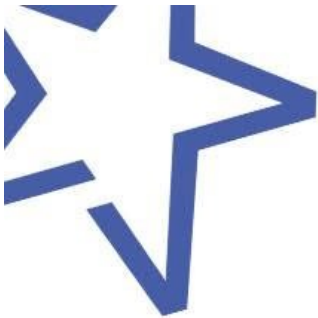
Telford Methodist Circuit Newsletter

18th June 2026

As Volunteers' Week comes to an end, we're taking time to pray and give thanks for all those who serve in our churches and communities 🙏

We are so grateful for the many people who generously share their time, gifts and care in ways that make a real difference to others.

Please join us in praying for volunteers and consider sharing this prayer with someone you'd like to thank. Thank you.



Dear Lord,

Thank you for our volunteers and for the unique ways they all serve.



We ask that you continue to encourage and strengthen our volunteers and that you help us, and others, to recognise and celebrate them.

Amen



Margaret Wakeley a member of Leegomery and now Hadley and Leegomery for many years sadly passed away on 2nd June 2026.

Up to the last few years Margaret was a very active member helping out with Church and fund raising activities.

Her funeral will take place on Tuesday, 7th July at 12.30 pm at Hadley and Leegomery Methodist Church.



The summer is when many of us travel – whether that's tickets to a festival, going on holiday, or simply a day trip to enjoy the summer months. The Evangelism and Growth Team have been out and about too: over a glorious weekend at Cliff Festival we discussed what it means to take brave steps as churches, explored what a pioneer looks like, and practised testimony while sipping bubble tea in The Hope & Anchor.

If you're planning to attend a Pride event near you this summer and you're wondering how to share the good news there, check out the resources below. And if you have folks looking to journey with Jesus, perhaps for the first time, you can find details below of our new Methodist enquirers' course, *On The Way*.

Looking ahead, perhaps you're up for a day trip to London on 15th September? If so, get your ticket for [Bring Everything to the Light with the fabulous Elaine Heath](#), or book a ticket for the livestream and join us online.

An event poster for "Bring Everything to the Light" featuring Revd Dr Elaine Heath. The poster has an orange and white color scheme. It includes the date "September 15 Tuesday" and the time "7-9 PM GMT". The text "sign up now" and "book your tickets now" is written in a cursive font. The event is hosted by "The Methodist Church" and is "open to all". The location is "Lumen United Reformed Church & Community Centre, 88 Tavistock Place, London WC1H 9RS". A photograph of Revd Dr Elaine Heath is featured on the right side of the poster.

This month's story of hope

One of the highlights of Cliff Festival this year was a packed panel discussion in *The Hope & Anchor* entitled: *Plan to grow or plan to close*. People squeezed in along the walls and sat on the floor with their bubble tea to hear our panel of practitioners share their wisdom. We discussed bad reasons to sell buildings and what using property for mission looks like. We heard about Ashbourne Methodist Church's ambitious project to transform their site so that they might better share the gospel in their town. We considered a range of contexts, from small village chapels to large city churches. We talked about the challenge of doing things *differently* rather than doing more, when lots of people are tired, and the importance of taking brave steps. If you're looking for resources to help you take courage in your context, including stories of other churches making brave decisions, check out methodist.org.uk/grow.



Eco News from the Telford Circuit



“Therefore encourage one another and build each other up, just as in fact you are doing.” *1 Thessalonians 5:11*

In response to recent feedback and as we consider ongoing mission in our communities ahead of a new pattern of ministry from September, this seems a good time for a reminder about the Eco Church Scheme...

Eco Church... What is that again?

Eco Church is an award scheme run by the Christian environmental charity **A Rocha**. The aim is to encourage and celebrate churches following their Christian calling to care for God's Creation. More than 7,500 churches across England and Wales are already registered and benefitting from the free resources and guidance helping them to live more ethically together, connect with their communities over things that matter to us all, save money and energy in their buildings and much more. To find out more about how Eco Church works, click on this link: [How Eco Church Works - Eco Church](#)

What might that look like in real terms?

Stories of how churches have engaged with caring for creation are as varied as the churches themselves. Whilst there are things we can all be doing, your church priorities will reflect what motivates you, the needs of your congregation and the passions and needs of your local community. And the best thing is that many of the projects are not only good for the environment but also good for mission, building up positive relationships with others in the community and increasing the number of people coming into the church! To read some examples, click here: [Stories - Eco Church](#)

Isn't this just one more thing to do when our resources are already stretched?

Eco church isn't about taking on lots of new work but about recognising and celebrating what you already do. As you read through the reflective questions in your church meetings there will be things you can tweak in your worship, management of resources or life together. There will be suggestions for ways different groups within the church can get involved. There will be ideas for engaging with your community, helping you get to know like-minded people outside the church. And there will be plenty of resources, support, wisdom and even access to funding which will help you to grow as a congregation as you also care for our common home.

If you would like to talk about this more, get in touch with Jo on jokudlacik@gmail.com

A justice seeking church



Some important dates and resources for **June**.
Could you include these in prayers and worship?



5 June World Environment Day [Link](#)

The theme for World Environment Day this year is Climate Change. For a beautiful service 'Living Hope for Creation' to use in your church, please email Jo at jokudlacik@gmail.com



15–21 Refugee Week (21 Sanctuary Sunday)

The theme for Refugee Week 2026 is 'Courage'. For information on events, simple acts and films click [here](#)

Worship resources to mark Refugee Sunday are available from [Faithward](#), [Christian Concern for One World](#), [Church of Sanctuary](#), [The Methodist Church](#).



15-21 Learning Disability Week [Link](#)

Only 26.7%

of adults with a learning disability are employed yet 86% of unemployed people with a learning disability want a paid job.

1 in 3

people with a learning disability spend less than 1 hour outside their home on a typical Saturday.

Over 2,000

people with a learning disability and/ or autistic people are currently locked away in mental health hospitals.

Information taken from our 2024 Mencap Manifesto

Resources to start considering making church more exciting for those with Learning Disabilities are available from [Church of Scotland](#), [Methodist Church](#), [URC Wales](#)



28 Tax Justice Sunday

An opportunity reflect on tax as a way of showing love, caring for creation and bringing about a fairer, more just society. Resources and speakers available from [Justmoney](#)

The Telford Circuit Team for Justice and Inclusion will be on **Wednesday 3rd June at Dawley at 7:30pm** All are very welcome! Contact Jo if you would like more information jokudlacik@gmail.com



HOW ANITA'S FAITH HELPED HER FIND HER SPACE

Anita was at risk in Sudan. She found safety and belonging in her local faith community and now works as a teaching assistant.

“Back home in Sudan it was really hard. We are Christians, they wanted me to wear a hijab, I went to court many times about that, it was really difficult for us. I wore a cross, and they took it from me. I came to the UK in 2006.

The situation right now is very difficult. We need people to help – Sudan really needs help. There is no water, no food, there's no medicine, no hospital, nothing. It is heartbreaking. It's always in my mind. I can never forget it. I just think: what can I do?

A year ago, I helped four of my relatives to leave the most dangerous area, but one of them is still in Sudan. I send money, but it doesn't reach him, it's really difficult. I talk to him as often as I can. He's where the war is.

Here, some people don't know where Sudan is. We try to explain, but there's nothing in the media.

People here are really generous and good. When I came, it was difficult, I really wanted to know what people were saying! I really wanted to talk to people. I started volunteering.

The first thing I did was to go to a Catholic Church, when I found that, I improved my English, they used sign language with me at first! I made coffee, I helped cook, and they taught me English slowly, at the church. They were really kind. The elderly people sat down to eat, after the service, and slowly, slowly, with the care they gave me, it really helped me to learn.

I went to college, I went there to learn English. I love kids, so I wanted to be a teaching assistant. I learned English and did ESOL classes and computer classes. At the same time, I went to the Refugee Council, and started volunteering there, with people who came from lots of countries, including my country.

I also started volunteering in the primary school where my kids were going. I really wanted to learn, they gave me opportunities, I went into the classes, reception, year one and two. Then there was an opportunity as a lunchtime supervisor, and I got to know the kids. In 2016 I got a job as a lunchtime supervisor.

I went to Sheffield College to do a qualification to be a teaching assistant. I was working as a lunchtime supervisor and going to college as well. In 2020 I got my qualification to be a teaching assistant. I still work as a lunchtime supervisor too. They gave me a temporary job with the SENCO kids, who needed extra help.

I've been working there, I worked all through COVID, and last year, they gave me a permanent job. I have lots of ideas, and I know the parents too.”

REFUGEE WEEK 2026 15 – 21 JUNE

Join us in celebrating the courage of refugees and the communities welcoming them across Britain.

<https://www.refugeecouncil.org.uk/stay-informed/>



National Emergency Briefing

[Chris Packham's petition](#) calling for a televised emergency briefing on the climate and nature crisis has passed 23,000 signatures, and the government has now issued an interesting response.

The government is positive about the work of the National Emergency Briefing, acknowledging the growing risks posed by climate and nature breakdown, and recognising the need to act faster to protect the UK.

We welcome those points.

However, we believe their response leaves one crucial question unanswered.

Our petition is not about whether the government itself is aware of these risks. It's about making sure the British public is fully informed of them.

The government points to ministerial statements as evidence of communication. But a statement made to 650 MPs in Parliament is clearly not the same as a prime-time televised emergency briefing, which would be introduced by the Prime Minister, delivered by independent experts, and designed to reach the entire nation through television, radio, news coverage and social media.

We have published our full response to the government's statement here:

[Our reaction to the government response](#)

Our work to secure a government-led televised emergency briefing continues. Across the UK, communities and organisations are already stepping up to fill the communication gap, with more than 1,600 screenings of the *People's Emergency Briefing* now registered on our [interactive map](#).

If you have not yet signed the petition, you can do so here:

[Hold a UK-wide briefing on climate and nature risks - Petitions](#)

Continued on next page.

It would be a great help if you could share it with friends, family and colleagues. Reaching 100,000 signatories will trigger a parliamentary debate which would significantly boost awareness.

If you would like to bring the film to your community, workplace or organisation, you can join more than 1,600 screening hosts by registering interest here to receive information on how to run a screening.

[National Emergency Briefing](#)

Screenings are spreading to other nations and we now have subtitled versions available in Welsh, German and Bengali, with the following coming soon: Danish, Spanish (Latin), Portuguese (Brazilian), French, Turkish, Italian, Dutch and Arabic.

Thank you for everything you are doing to support the National Emergency Briefing.

Very best wishes
Simon & Nick Oldridge

on behalf of the National Emergency Briefing team

www.nebriefing.org



Coming to the Conference

The 2026 Conference will take place at the Telford International Centre, International Way, Telford TF3 4JH. The nearest railway station is Telford Central, a 15-minute walk or short taxi-drive away. The nearest airport is Birmingham International, with rail connections from Birmingham International Station.

As well as its 225 representatives and 16 associate members, the Methodist Conference welcomes interested visitors and anyone may attend the open Conference sessions, visit the exhibition or attend fringe events. There are very few closed sessions and these are clearly indicated in the agenda.

Visitors do not need a ticket **except** for the Opening of the Conference on the afternoon of Saturday 27 June and Reception into Full Connexion and Sunday Worship on Sunday 28 June. You will also need a ticket if you wish to attend one of the Ordination services on Sunday afternoon.

Tickets are free and you will be able to book online on this website from April.

[Coming to the Conference - The Methodist Church](#)

Have your say on digital in our Church

We'd like to hear what you think. Whoever you are, your view matters.

We're listening across the **whole Methodist Church** about how **digital things** - websites, apps, the way we communicate - are **working for people**, and **what could be better**.

Whoever you are, whatever your role: minister, steward, regular worshipper, volunteer helping out, family member of someone in the church - we'd genuinely like to hear from you. You don't need a digital background, or any particular knowledge, or to be part of any group.

What we'll do with what you tell us **We close the loop.**

At the end of every month we publish a short "*Here's what we heard*" post that names the themes that emerged, what we've done already and what we're looking at doing going forward.
The loop is the offer - without it, this would just be a suggestions box.

[Digital Transformation Programme - Have Your Say - The Methodist Church](#)

TABLE TOP SALE

DAWLEY CHRISTIAN CENTRE

**On Friday
19th June 2026**

9.00am – 12 noon

***Come along and pick
up a bargain.***

***To book a table (only £5)
please phone 01952 505108***



Carnival Teas

Saturday 27th June

From 2:30pm



Enjoy a cuppa and a cake, at the Trinity Centre
in Victoria Road.

Great vantage point for the Carnival
Procession!

Proceeds towards Oseddzi Methodist Primary
School Ghana



Donations of cakes and biscuits gratefully received at Trinity on Friday 26/6
from 9:15 - 11:45am. Contact Alison Leath Tel: 07773 508730

SHIFNAL PRIDE CELEBRATION

Reaching out together, to share God's amazing faith, hope and love!

Join us for an inclusive LGBTQ+ affirming service of celebration and diversity, followed by fellowship, tea and cake.

Please bring a flower with you as part of our service!

Together, we create a world where all can love who they choose to love. A journey of embracing all with understanding, equality, unity and respect.

**Sunday
28th June
at 6pm**

**ALL
ARE
WELCOME**

**St Andrew's
Church,
Shifnal**





Farewell service for Rev Roger Dunlop



As you may have heard, Rev Roger Dunlop will be retiring this summer. Roger joined our Circuit five years ago after a virtual tour (during a COVID stationing) and has been a faithful friend and minister to six churches during that time as well as preaching in other churches across the Circuit and several times on Faith Space and leading the recent District Pilgrimage.

We hope that you will all join us to say 'goodbye' to Roger on 26th July at 4pm at Wellington Methodist Church, where the preacher will be Rev Frances Biseker.

The service will be followed by refreshments. Contributions of cake (preferably on a plate and cut into slices) would be much appreciated.

We look forward to see you there!

Pray with us today.

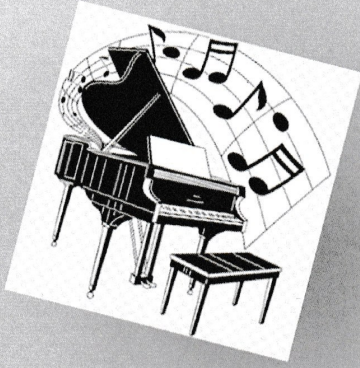
Loving God, We give you thanks for those early Methodists who, “obsessed with salvation” and Spirit-filled, felt compelled to share with others the message of your transforming love and to demonstrate this good news in practical ways to the poor and needy. Lives were transformed as thousands believed.

Speak to us again, we pray; inspire us afresh, that members of congregations in the Methodist Church in Ireland may once again be compelled by the love of Christ to share the good news throughout the island of Ireland. Equip us by the power of the Spirit that we may not only be involved in practical and charitable action, but also be able to speak of the transforming love we have experienced. Amen.

Elaine Barnett, Lay Leader of the Conference,
Methodist Church in Ireland

methodist.org.uk/prayer.





MUSICAL MEMORIES!



Matthew Richards

Returning by popular demand!



*Plays music from the films
on piano and ukelele.*

**At All Saints Parish Church,
Wellington.TF11DG**

Free Concert!



**SATURDAY
20TH JUNE
3.30 PM.**

**INTERVAL
REFRESHMENTS**

To book a ticket, either click on the QR code below,
call at All Saints Parish Centre,
or phone 07976 100321.

*Donations in aid of All Saints
Organ Restoration Fund.*





HeartSpace

worship for today

HeartSpace on Sundays

10:30am

Trinity Centre

Upcoming Dates

No HeartSpace on Sunday in May

(You are welcome to join us at Upton Magna Village Hall at 11:00am)

Sunday 21st June

Sunday 19th July



Contact:

heartspace@shifnalbenefice.org.uk



Reaching out together to share God's amazing faith, hope and love!



A Prayer Meeting is held at Horsehay Methodist Church on the first Thursday of each month

For the Autumn/Winter months, the meetings will start at the earlier time of 2.30pm





THE FILLING STATION

Haughmond & Wrekin

22 June 2026
7:15pm for 7:30pm - 9pm



Haughmond & Wrekin Filling Station,
Rodington Village Hall, Shrewsbury, SY4 4QS.
7:30 - 9pm, every 4th Monday.

Join us in June for our Haughmond & Wrekin Filling Station, for worship, teaching, prayer, fellowship & great hospitality!

Future dates

- 27 July
- 24 August

Main Speaker

Laura Lenander

Laura Lenander is the Leader of Telford Minster, a growing Anglican resource church in the centre of Telford. Laura is also an artist and leads on creative ministries for New Wine.



Laura is passionate about helping people encounter Jesus, raising up new leaders, and seeing local communities transformed by the presence and power of God.

More info at...
www.thefillingstation.org.uk/station/haughmond-wrekin



All you keen or would be bakers please

**Join us for Bread Church at
Dawley Christian Centre**

**On Saturday 27th June between
9:30-1:30pm (with a light lunch)**

**On Wednesday 24th June
between 1-3pm**



**Everything will be ready for you to make your
own bread and it's FREE!**

Please come along and give it a go.

SALE

Every item!



26th June 2026

from 9 - 12 noon

At Dawley Christian Centre



Bereavement cafe

A support group looking forward, following loss.

Thursday May 14th

Thursday June 4th

Thursday July 2nd

10:30am-12:00pm

The Trinity Centre, Victoria Road, Shifnal

Offering support, understanding & empathy

A small group brought together through loss.

We offer a relaxed, friendly and safe environment to talk with others, share memories and make new friends

Everybody welcome

For further information contact Claire: 07955 688627



The West Midlands District is inviting everyone to Bloom, their brand new District festival, taking place on Saturday 4 July, 10am–4pm at Trinity Methodist Church in Codsall.

It's a day for all ages, bringing people together from across the District for worship, workshops, creative activities and conversation.

The theme is *Rooted & Growing*, exploring our Methodist roots and how we continue to grow together in Christ.

There'll be a wide range of things to get involved in throughout the day, so do take a look at their website/scan the QR code on the screen if you'd like to find out more or book a place.

Visit wmmethodists.org.uk/bloomfestival.html or scan the QR Code to find out more and to book tickets:



The graphic features a large white tree silhouette on the left against a dark green background with faint leaf patterns. In the top right corner is the logo for 'The Methodist Church West Midlands District', which includes a red cross symbol. The main text reads 'We're going to BLOOM' in white and maroon, followed by 'West Midlands District Festival | Sat 4 Jul 2026' in white. At the bottom, it says 'and we can't wait!' in maroon and 'Find out more at wmmethodists.org.uk/bloomfestival.html' in white.

You can access the full communications pack here: [Bloom Comms Pack](#)

You can find out more about Bloom here: <https://canva.link/bloomfestival>

You can book tickets here: <https://www.tickettailor.com/events/wmmethodists/2125950>

People's Emergency Briefing

**Wellington,
Telford & Wrekin**

Film Screening and
Discussion

Thursday 9th July
7:00 for 7:30pm



All Saint's Church, Church St, Wellington
TF1 1DG

Supported by Telford & Wrekin Council

www.nebriefing.org

You are invited to attend a screening of The People's Emergency Briefing

An eye-opening film featuring nine leading UK scientists and experts updating us on the latest in the climate and nature crisis and its impacts on everyday national life.

Including:

- extreme weather
- food security
- health
- cost of living

Based on the National Emergency Briefing in Westminster, as covered by ITV, C4, and the Times. Followed by a short open discussion about what we can do and what it means locally.

Featuring Chris Packham, Deborah Meaden, surprise guests, and a wide range of Brits.

Come along and bring a friend.
Refreshments available from 7pm.
Film starts at 7:30pm, to be followed by an informal, supportive discussion.
Limited free parking is available at the church.
Ample free parking is available nearby.



CRAFT FAYRE



& TABLETOP SALE

BOOKS, DVDS AND JIGSAWS



AT

WELLINGTON
METHODIST CHURCH

TF1 1LU



4TH JULY 2026

10AM - 12 NOON

TABLE COST £10

phone Rosemary on 07496 556606 to book

WELLINGTON METHODIST CHURCH ART GROUP

ART EXHIBITION

We are holding an Art Exhibition of local artists' work
Do come along and see the display. Admission is FREE



2026

Friday 17th and Saturday 18th July

10am - 3pm each day
Tea, coffee and home-made cakes throughout each day

All proceeds from the Art Exhibition, after expenses, will be donated to Wellington Methodist Church

Our art exhibition is open to all artists, all abilities; it's a wonderful opportunity for art to be enjoyed in our community

Why not exhibit YOUR work?

For entry forms and more details contact Barbara Murray on 07592 881108 or email Linda Carter on lindap8080@gmail.com
Entry forms to be returned to Barbara Murray by Friday 27th June latest

The Methodist Church 

Wellington Methodist Church New Street, Wellington, Telford TF1 1LU
UK registered charity no. 1130091

Calling YOUNG artists

WE ARE
HOLDING
AN....

ART

& Art competition
for young people

EXHIBITION

The Art Group at Wellington Methodist Church are holding an art competition again for young people (up to age 16). **The theme for your piece of art is**

SUNFLOWERS

Prizes will be awarded for each age category, and will be announced at 2.30pm, Saturday 18th July. All pieces will be displayed in the exhibition.

To enter, please complete and return the tear-off section of this letter.

Friday 17th and Saturday 18th July 2026

For more details contact Barbara Murray on
07592 881108 or email barbaraqsc@gmail.com

To exhibit your work please complete the tear-off section of this entry form with child's name, parent/guardian's contact details and return to the Methodist Church by Friday 26th June.

One piece of art per young person (up to and including age 16), **MAXIMUM SIZE: A3 (297 x 420mm), UNFRAMED, to be delivered to the Church by Tuesday 7th July at the latest, between 11am - 12pm.**

Please write title (or description) of picture, name and age of artist, in capital letters on reverse of picture.

Prizes and certificates can be collected as they are announced at 2.30pm on Saturday 18th July.

Pictures can be collected when the exhibition closes on Saturday between 3pm - 3.30pm. Please note that while every care will be taken to ensure the safety of all artwork in the exhibition, all works are displayed at the owners own risk.

.....
First name Surname Age

Telephone Email

Title (or description) of picture

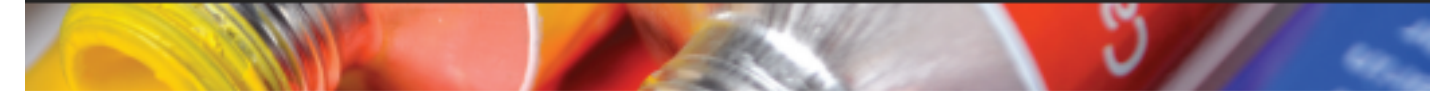
Personal information you give on this form will be treated in the strictest confidence and will not be transferred to any digital database, except for your email address which may be used only to contact you personally with any information concerning Wellington Methodist Church Art Group, if you tick the box below giving the Art Group permission to contact you via email in the future. This form will be retained by WMC Art Group until the end of the exhibition 2026 and then destroyed. If you wish to stop receiving emails from WMC Art Group please contact Barbara Murray on 07592 881108 or email barbaraqsc@gmail.com

Please tick box to give Wellington Methodist Church Art Group permission to contact you via email.

I understand that I exhibit my artwork at my own risk.

The Methodist Church
UK registered charity no. 1130091

Signature of parent/guardian Date



Our art exhibition is open to all artists,
all abilities; it's a wonderful opportunity
for art to be enjoyed in our community

ART EXHIBITION 2026

Dear Artist

Once again Wellington Methodist Church Art Group is planning to hold an Art Exhibition and this year it will be held at the Church on **Friday 17th and Saturday 18th July 2026 from 10am to 3pm each day**. We hope we can interest you in exhibiting some of your work. Pieces can be 2D or 3D, in any media including photography.

To exhibit your work **please return an Entry Form to the Methodist Church by Friday 26th June** at the latest, so that we can produce the catalogue. No late entries will be accepted. If you would like us to send you an Entry Form please email **Linda Carter on lindap8080@gmail.com**

As with all exhibitions, and especially with all the safety precautions we continue to undertake, we are asking artists for a **minimum entry fee per piece of £5** to exhibit. This will be collected when artwork is handed in. **Please deliver your artwork to the Church on Thursday 16th July, from 10.30am to 12pm and attach a label to the back of each piece of artwork with your name and title of piece.** You can display up to a maximum of three works, none of which should have been displayed before in one of our exhibitions. If you wish to sell your work we ask for prices to be a minimum of £20. If you prefer not to sell your work, only one piece can be exhibited as not for sale. Limited hanging space may restrict the number of artworks exhibited. We therefore reserve the right to display less artworks in the exhibition than submitted. It may be necessary to display some items on tables.

Maximum size (including frame): 24" x 20", 60cm x 50cm, pictures need to be framed and fitted with D rings and cord. Please check that when hung the **cord is not visible above the top of the frame**. Display labels will be produced to go with your work. A commission of 20% will be charged on any works sold to help cover our costs. Please see Terms and Conditions on back of this letter.

Work must be collected when the exhibition closes on the Saturday between 3pm - 3.30pm or only by prior arrangement on Tuesday 21st July. Please note that while every care will be taken to ensure the safety of all work in the exhibition, all work is displayed at the owners' own risk. Artists are strongly advised to insure their own works as the Church only covers public liability insurance.

We appreciate offers of help with stewarding each day of the exhibition, greeting visitors and being available for enquiries and sales. Refreshments will be served on both days and we would be grateful for any donations of biscuits, small cakes or cakes to slice which can be sold. Please indicate on the Entry Form if you are able to help or contact me directly.

If you have any queries, please don't hesitate to get in touch with me. We look forward to hearing from you. This will be our 16th Art Exhibition. Our past exhibitions have been a great success and with your support, this one will be as well.

Barbara Murray
On behalf of Wellington Methodist Church

WELLINGTON METHODIST CHURCH ART GROUP

CONTACT: Barbara Murray
New Street, Wellington, Telford TF1 1LU
Telephone 07592 881108
Email barbaraqsc@gmail.com
www.wellingtonmethodist.org.uk

Find us on Facebook 

All proceeds from the Art Exhibition, after expenses,
will be donated to Wellington Methodist Church


The **Methodist Church**
UK registered charity no. 1130091

ART EXHIBITION 2026

Friday 17th and Saturday 18th July
10am to 3pm

Terms and Conditions

The exhibition is open to all artists local to Telford.

To exhibit your work, please return this Entry Form to the Methodist Church by Friday 26th June.

Please deliver your artwork to the Church on Thursday 16th July, from 10.30am to 12pm. We are asking adult artists for a **minimum entry fee per piece of £5** to exhibit, as handed in.

All work must be unwrapped on delivery, with any packaging taken away.

All artwork is displayed at the owners' own risk.

Work must be collected when the exhibition closes on the Saturday between 3pm - 3.30pm or only by prior arrangement on Tuesday 21st July.

A maximum of three works may be submitted, none of which should have been displayed before in one of our exhibitions. If you wish to sell your work we ask for prices to be a minimum of £20. If you prefer not to sell your work, only one piece can be exhibited as not for sale.

Only original artwork can be entered; artwork created from a kit will not be accepted. If the piece is a copy of another artists work this is acceptable but the title must include a reference to the original artist as After Artist's Name.

Maximum size (including frame): 24" x 20", 60cm x 50cm, pictures need to be framed and fitted with D rings and cord. When hung the **cord must not be visible above the top of the frame**. Alternatively, pictures can be supplied mounted, if covered with cellophane.

Limited hanging space may restrict the number of artworks that can be exhibited. We therefore reserve the right to display less artworks than submitted. Please note that Wellington Methodist Church have the option to exclude works from the exhibition which might offend, and please note that photography will be allowed in the exhibition but visitors will be made aware that all images are subject to copyright.

A 20% commission will be taken on all work which is sold to help cover costs. Payment to artists for sold works will be by cheque.

If you would like to donate any of your greetings cards to sell for Church funds, please hand in when delivering your artwork. Unfortunately we are unable to sell cards on behalf of an artist.

Data Protection

Personal information you give on your Entry form will be treated in the strictest confidence and will not be transferred to any digital database, except for your email address which may be used only to contact you personally with any information concerning Wellington Methodist Church Art Group, if you tick the box on your Entry form giving the Art Group permission to contact you via email in the future. Your Entry form will be retained by WMC Art Group until the end of the exhibition 2026 and then destroyed. If you wish to stop receiving emails from WMC Art Group please contact Barbara Murray on 07592 881108 or email barbaraqsc@gmail.com

Please return your ENTRY FORM to Barbara Murray by Friday 26th June latest

WELLINGTON METHODIST CHURCH ART GROUP New Street, Wellington, Telford TF1 1LU

Telephone 07592 881108 Email barbaraqsc@gmail.com

www.wellingtonmethodist.org.uk

Find us on Facebook 

All proceeds from the Art Exhibition, after expenses, will be donated to Wellington Methodist Church

The **Methodist Church** 
UK registered charity no. 1130091

WELLINGTON METHODIST CHURCH
 Minister: Rev. Roger Dunlop

ART EXHIBITION 2026

ENTRY FORM

To exhibit your work, please return this Entry Form to the Methodist Church by Friday 26th June.

Please deliver your artwork to the Church on Thursday 16th July, from 10.30am to 12pm.

Work must be collected when the exhibition closes on the Saturday between 3pm - 3.30pm or only by prior arrangement on Tuesday 21st July.

Friday 17th and Saturday 18th July
10am to 3pm

First name Surname

Please note, if your work has sold, cheque will be made payable to you, as your name above, and your name will appear in the catalogue as this unless you request otherwise

Telephone Email

Title (or description) of work *Please list in alphabetical order, 25 characters maximum	Media	Approximate size (cm)	Sale price/ Not for sale*

*Please note, only one piece can be exhibited as not for sale

IMPORTANT: Please attach a label to the back of each artwork with title and your name

See exhibition letter for Terms and Conditions, and information regarding Data Protection

Please tick box to give Wellington Methodist Church Art Group permission to contact you via email

I understand that:

- Adult artists are asked for a minimum entry fee per piece of their artwork of £5 to exhibit
- I exhibit my work at my own risk and that a 20% commission will be taken on all work which is sold
- I give permission for a photograph of my work to appear in WMC Art Exhibition publicity and their web site

Artist's signature Date.....

Please place a tick in the boxes below if you are able to help with stewarding or refreshments.

Donation of cakes or biscuits?				
Friday 17th July steward/refreshments	10am - 12pm	12 - 1pm	1 - 3pm	
Saturday 18th July steward/refreshments	10am - 12pm	12 - 1pm	1 - 3pm	

Please return your ENTRY FORM to Barbara Murray by Friday 26th June latest

WELLINGTON METHODIST CHURCH ART GROUP New Street, Wellington, Telford TF1 1LU

Telephone 07592 881108 Email barbaraqsc@gmail.com

www.wellingtonmethodist.org.uk

UK registered charity no. 1130091

All proceeds from the Art Exhibition, after expenses, will be donated to Wellington Methodist Church.

Motown

Daytime Disco

Also featuring hits from the '50s - '80s



Only
£5.00

Raising funds to
support
local older people

Saturday 25 July

1.00 - 4.00pm

**Hadley Community Centre
30 High St, Hadley TF1 5NL**

For more info contact:

t: 01743 233 123

e: fundraising@ageukstw.org.uk

 Shropshire
Telford & Wrekin
ageUK
Let's change how we age

★ Light refreshments

★ Themed mocktails

★ Raffle

Supported by Local Councillor Julie Kaur

Circuit Prayer Space

Circuit Prayer Space on a Monday morning at 8:30am.

Val Smith is inviting you to a scheduled Zoom meeting.

Topic: Circuit Prayer Meeting

Time: This is a recurring meeting Meet anytime

Join Zoom meeting:

[https://zoom.us/j/96716434790?
pwd=RTZZa210Q1ZOWCtLTWk3NHoyWDVIQT09](https://zoom.us/j/96716434790?pwd=RTZZa210Q1ZOWCtLTWk3NHoyWDVIQT09)

Meeting ID: 967 1643 4790

Passcode: 355690

God loves you
unconditionally, no strings attached.
That's the good news.

Faith Space - An online service for all

Starts at 6:30pm on the link below.

Weekly zoom services for anyone and everyone wherever in the world you are!

Join Zoom meeting:

[https://zoom.us/j/95651019665?
pwd=bGgyVEdvQ0cvNDRpWm5HTVB0UDRmdz09](https://zoom.us/j/95651019665?pwd=bGgyVEdvQ0cvNDRpWm5HTVB0UDRmdz09)

Meeting ID: 956 5101 9665

Passcode: 395669

God bless you all and see you soon!



Bible Studies in the Circuit

Circuit Online Bible Study

Bible study on Mondays at 1:30pm.

Please click on the link below.

<https://zoom.us/j/95651019665?pwd=bGgyVEdvQ0cvNDRpWm5HTVB0UDRmdz09>

Please join us as we work our way through Matthew. Matthew was very good at keeping records and his account of spending time with Jesus and growing as a Christian himself, is very inspiring. All are welcome.

Meeting ID: 956 5101 9665

Passcode: 395669

Admaston meet on the 2nd Tuesday of the month between 10-11:30am.

They currently meet in the home of one of the church family but if the numbers increased they would be happy to transfer the bible study to church.

Cartway, Bridgnorth has 3 bibles study groups.

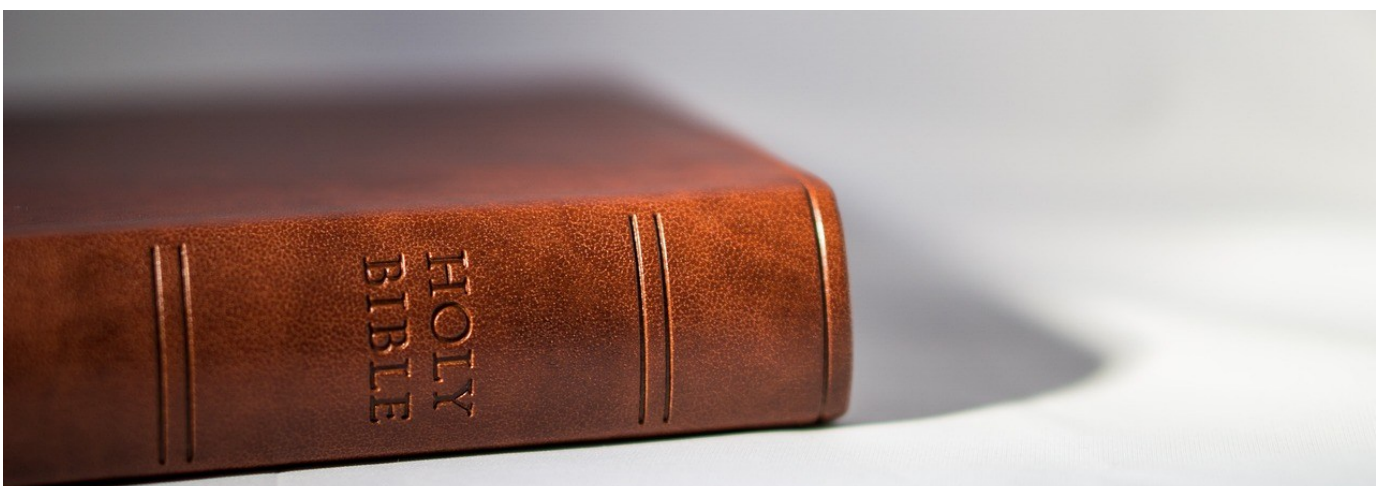
Shambles Group meet on 2nd Monday of the month at 10:30am

Orchard House Group meet on 3rd Monday in the month at 10:30am

Greenfields Group meet 3rd Tuesday in the month at 2pm.

Dawley - Bible study group meets for two 5-6 weekly sessions each year. One during Lent the other during Advent.

Dunwell - Has a bible study before church service each Sunday (Service starts at 10am)



Spiritual Abuse Awareness training dates 2026



Spiritual Abuse Awareness Training

Developed by the Methodist Church Safeguarding Team, Learning Network and Survivors Group in conjunction with Dr Lisa Oakley, Chester University & Thirtyone.eight

Course overview:

- What is spiritual abuse?
- What is the impact of the experience
- How to build healthy cultures

10.30 – 15.30

29th January 2026

4th June 2026

24th September 2026

19th November 2026

on Zoom

To book your place, please follow this link:
<https://imethodist-spiritual-abuse-training.eventbrite.co.uk>

For more information please contact Christine Kennedy (ckennedy@methodistchurch.org.uk)
Bridget Down (bridget@methodistchurch.org.uk) or David Knight (davidk@methodistchurch.org.uk)

The Methodist Church

We are pleased to announce 4 new dates for the Spiritual Abuse Awareness Training in 2026:
29 January

4 June

24 September and

19 November

All the sessions are on Thursdays, from 10.30 – 15.30

To book, please use the Eventbrite link: [Book on Eventbrite for Spiritual Abuse Awareness training](https://imethodist-spiritual-abuse-training.eventbrite.co.uk)

See the [Spiritual Abuse - The Methodist Church](#) webpage for further details.

Download a poster [Spiritual Abuse Awareness training poster](#)

Please get in touch if you have something to share.

Email:

circuitsupport@telfordmeth.org.uk

or phone 01952 505108



Can you provide a plain cotton T Shirt (both for men and woman) to someone in a mental health institution (Pantang Psychiatric Hospital) in Ghana?

The newly inaugurated Sussanah Wesley Mission Auxiliary (SUWMA) within the congregation of Dunwell Methodist Church, Ketley are making their Easter project to provide clothes to the people who are living in Pantang Psychiatric Hospital. They would very much welcome your support. Very often, when families take their loved ones to the institution, they are just left there. They don't get any visitors and there's little hope of them ever leaving. Their families don't provide for them, so it's left to a few people to look after them. And they are struggling.

People taken to the institution include those who have had a breakdown, life in Ghana can be very hard and people struggle to cope.

We can help make their lives more comfortable and respect their dignity by providing clothes. It's very hot in Ghana so cotton T shirts are ideal.

If you can help please pass your T shirts on to a Church Steward and we will arrange a way to collect them. Thank you.

Best sizes to buy/donate would be size 14 and above for woman.

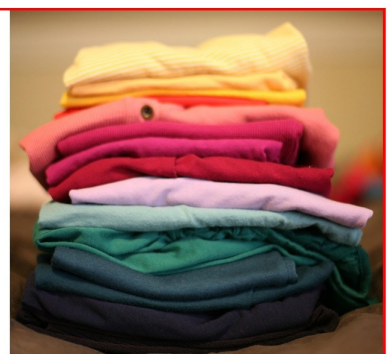
Large for men.

Bright beautiful coloured T shirts would certainly brighten their day!

Any help would be greatly appreciated.

Feel free to add a note too which could be read to our friends in Ghana.

It's a wonderful way to show love to a stranger.





Albrighton Methodist Church

Regular church activities

Cafe Central

Every Thursday 10.00 to 12.00

Excellent coffee!
Meet with friends, old and new.



Monthly Cafe

First Saturday in the month 10.00 to 12.00

With high quality bric-a-brac and book stalls.



Open Door

First Tuesday in the month
7.30 to 9.00

Wide variety of speakers ranging from singing, wildlife, travel logs, health related.....



£2 per head. Speaker usually puts fees to a charity.



UPDATE!



Telford Methodist Circuit
International Project 2026
together with

Ajumako Osedzi Methodist Primary School,
Ghana



Our aims:

- 1) the provision of an outside canteen
- 2) the renovation and repainting of the classrooms & offices

Can you help us raise £6500 by the end of 2026?

Thank you for the £1650 already donated!



Bringing us together to share
God's amazing faith, hope and love.

Forget me not Group
for people affected by dementia.
**Third Thursday of
the month at 2:00pm**
Come and join us - there's a warm
welcome and a friendly atmosphere.

For more information, or for if you want to have a
conversation about memory difficulties or
dementia, contact Sarah Thorpe on 07982 248949 or
sarah.thorpe121@gmail.com

You're invited to join us ...

1st Wellington Boys' Brigade and Girls' Association

Where: Wellington Methodist Church, TF1 1LU

When: Wednesday evening 5:30 to 7pm

Who: Boys & girls, ages 5 to 11

Why: **Join the Adventure!**

What: Lots of things ...

Play Games – Craft activities
Learn new Things - Meet new friends
Learn about the Christian Faith
Table Tennis – Having fun
Music – Competitions – Badgework
Baking – Football – Dodgeball

THE BOYS' BRIGADE & GIRLS' ASSOCIATION
the adventure begins here

Call or Whatsapp
Company Leader
Alastair Batrick
07977 508723

Coffee Morning at Cartway Methodist Church, Bridgnorth

On the 1st Saturday of each month between 10am –12 midday there is a Coffee Morning at Cartway Methodist Church.

There's going to be a great raffle,.

All are welcome.



Wellington Methodist Church

Are Craft and Chat Group meet on the 2nd & 4th Friday of each month from 10am-11:45am.

There is a small charge but this does include a drink

You are welcome to drop in any time.

Everyone is welcome.



Coffee Mornings at Horsehay

**Every Wednesday:
10.30am - 12.00 noon**

**Join us for tea/coffee,
fellowship and lots of
chat and laughter!**



Ladies' Fellowship at Horsehay Second Tuesday of each month

in the vestry @2.30pm

ALL WELCOME - BRING A FRIEND!

Painting for Pleasure at Horsehay Methodist Church

Informal art groups (no tutor, but lots of chat and helping each other with tips and techniques). Whatever your skill level, if you enjoy drawing and/or painting, why not come and join us? **Thursday and Friday mornings** 10.00 - 12.30. £5.00 per session.

Wool Wanted

If anyone has any spare balls of wool they don't need, can you let Sharon (01952 505108) in the Circuit Office know please?

At Dawley we are making knitted and crocheted blankets for the dementia patients at the Princess Royal Hospital.

The colourful blankets help patients, particularly those with dementia, to find their way back to bed more easily – and also see the edge of the bed more clearly when getting in and out. They also provide a more homely feel to the wards. Thank you.

[Calling all knitters: blankets wanted for patients with dementia – SaTH](#)



Bereavement Cafe

A monthly opportunity to meet and chat with others who have been bereaved, hosted by members of local churches.

Second Monday of each month

2:30-4:00pm

Wellington Methodist Church



Morning everyone,

I hope you're all well.

I wanted to share a quick update regarding our safeguarding contacts within the Connexional Team. As some of you may already be aware, Sue Holder has now retired after 12 years in her role, and Neil Hutchinson has taken over from her.

Neil will be working 21 hours, generally Monday to Wednesday. Steph Bradley remains our main Regional Officer for Safeguarding, working 33 hours across the week. However, both can be contacted out of office hours for any urgent safeguarding matters.

Please update your records with their contact details below:

Neil Hutchinson
Email: hutchinsonn@methodistchurch.org.uk
Mobile: +44 (0) 7384 810901

Steph Bradley
Email: bradleys@methodistchurch.org.uk
Mobile: 07817 808557

If there are any further changes, I will let you know.

Many thanks,

Lauren



Lauren Baxendale

Circuit Safeguarding Officer

Dawley Christian Centre, High Street, Dawley, Telford, TF4 2EX
07904 814741
Safeguarding@telfordmeth.org.uk | www.telfordmeth.org.uk

Circuit 3/18 | Registered Charity 1134372

Please note that I work part-time—my regular working hours are Tuesday to Thursday during office hours. This email and any attachments are confidential. If you are not the intended recipient, please inform me and delete the message.

Safeguarding Reminder: Contact Your Church Safeguarding Officer First

Keeping everyone safe in our church community depends on clear communication and following the right channels.

If you have a safeguarding concern, no matter how small or uncertain, your first point of contact should always be your Church Safeguarding Officer (CSO). They are trained to provide guidance, support, and ensure the right steps are taken in line with Circuit safeguarding policy.

If your church does not have a CSO, or if an issue cannot wait, you can contact:

Lauren Baxendale, Circuit Safeguarding Officer

safeguarding@telfordmeth.org.uk | 07904 814741

Stephanie Bradley, Regional Officer for Safeguarding

bradleys@methodistchurch.org.uk | 07817 808557

Reporting concerns promptly to your CSO helps ensure that any issues are monitored, addressed, and escalated as needed.

Thank you for your vigilance and for helping keep our churches safe, welcoming, and supportive for everyone.

Safeguarding – Dates for Your Diaries!

Calling all those in the Circuit who require Safeguarding training, whether it's a refresher or your first time attending the course (it's the same course for both). There are three upcoming courses in the next few months, so book your place early by emailing me, Lauren Baxendale, Circuit Safeguarding Officer, at safeguarding@telfordmeth.org.uk.

Important Information:

- The refresher interval for safeguarding training is **four years**. This ensures that everyone in key roles receives good quality, up-to-date training.
- If you last attended a course in **2022**, it's time to get yourself booked on another!
- If your role requires the **Advanced Module**, you must **first complete** the **Foundation Module** before progressing.

Options for completing the Foundation Module now include an **online module** that can be done at your own pace. Please see the information in the article below for more details on accessing the course.

Which Safeguarding Training Do I Need to Attend?

Please see the following documents on the [Methodist Church website](#) for details on who needs to attend each module:

[Safeguarding Foundation Module Training: Who needs to attend?](#)

[Safeguarding Advanced Module Training: Who needs to attend?](#)

Many thanks,
Lauren



Lauren Baxendale

Circuit Safeguarding Officer

Dawley Christian Centre, High Street, Dawley, Telford, TF4 2EX
07904 814741
Safeguarding@telfordmeth.org.uk | www.telfordmeth.org.uk

Circuit 3/18 | Registered Charity 1134372

Please note that I work part-time—my regular working hours are Tuesday to Thursday during office hours. This email and any attachments are confidential. If you are not the intended recipient, please inform me and delete the message.

From 1st August 2025 Stephanie Bradley who looks after Advanced Training Course for the West Midlands District has a new email address:

Bradleys@methodist.org.uk

Stephanie's phone number: 07817808557

Dear Friends,

Please see latest link for advanced courses -

We have courses on -

- 25/7/26 Bromsgrove & Redditch Circuit

www.eventbrite.co.uk/o/stephanie-bradley-81147774823?msocid=39ddb784e41769a00dcea183e5f8680a

Thank you.

Steph

Safeguarding
Young people and vulnerable adults

Safeguarding Training – Now Available Online

The Safeguarding Foundation Course is now available online via [MCBX](#), making it easier than ever for church members to complete their safeguarding training.

This flexible option is ideal for those who find it difficult to attend face-to-face sessions, as the course can be completed at your own pace. MCBX (mcb.theologyx.com) is the Methodist Church's online learning platform, providing access to safeguarding training, supporting materials, and a downloadable certificate on completion.

This online course complements, rather than replaces, face-to-face and participatory training, which continue to be an important part of safeguarding learning.

If you need to complete the Safeguarding Foundation Course, please speak to your Church Safeguarding Officer for further guidance.



Lauren Baxendale

Circuit Safeguarding Officer

Dawley Christian Centre, High Street, Dawley, Telford, TF4 2EX
07904 814741
Safeguarding@telfordmeth.org.uk | www.telfordmeth.org.uk

Hi all

Please see link for online advanced if you have anyone who prefers online ~

<https://www.eventbrite.com/cc/nd-methodist-district-safeguarding-training-4444573?utm-campaign=social&utm-content=creatorshare&utm-medium=discovery&utm-term=odclsxcollection&utm-source=cp&aff=escb>

Dates available:

June 30th 10am & 7pm

Any questions please ask.

Thanks

Stephanie Bradley

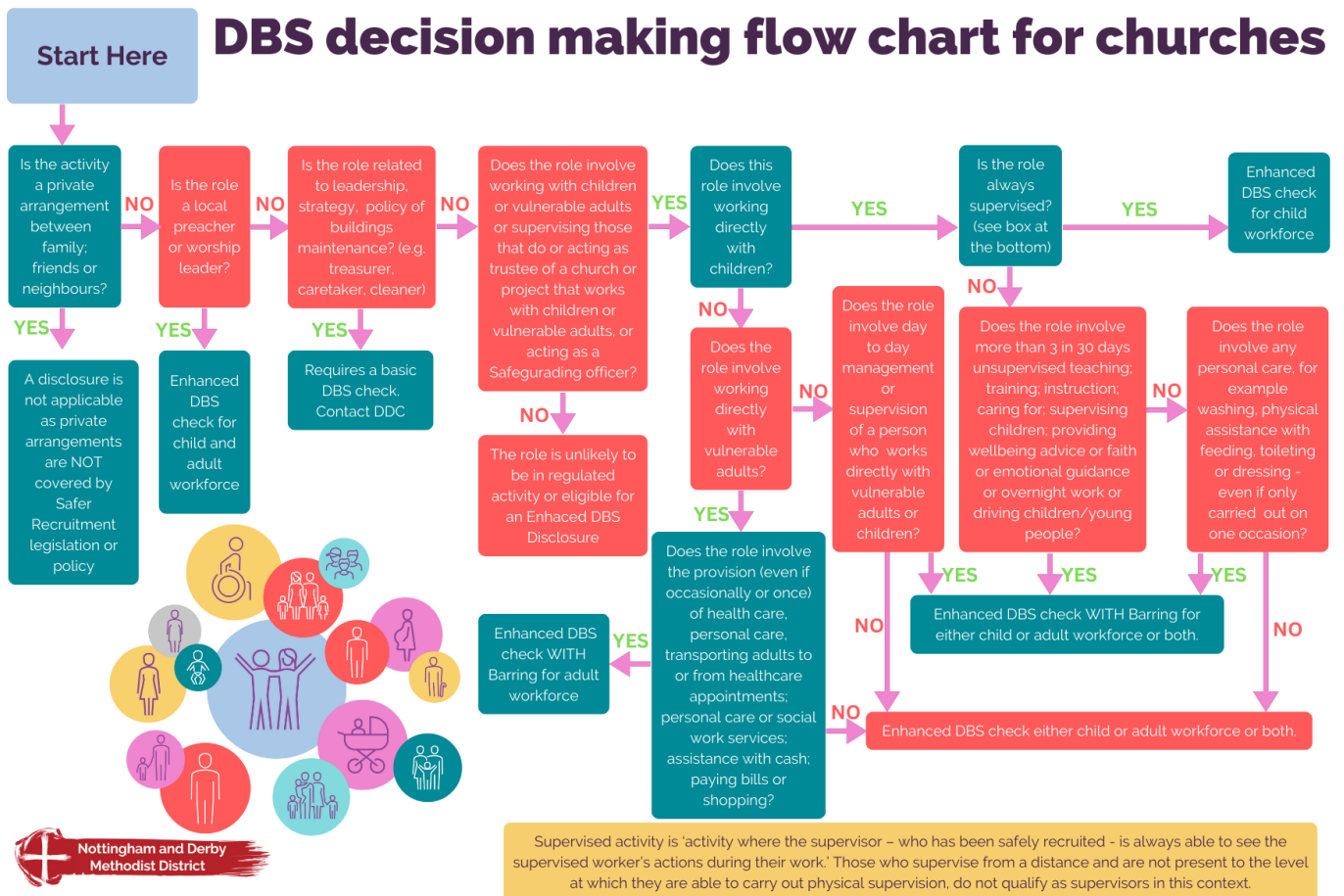
Regional Officer for Safeguarding - North West (West Midlands) |

The Connexional Team

Phone: 020 7467 5296

The **Methodist Church**

Safeguarding
Young people and vulnerable adults



New Safeguarding Reporting Form

Safeguarding is everyone’s responsibility, and clear communication is key to keeping our community in the Telford Methodist Circuit safe and supported.

A new **Safeguarding Reporting Form** is now in use across the Circuit. Copies have already been shared with your **Church Safeguarding Officers (CSOs)** and should shortly be **appearing on the Circuit website and your church safeguarding noticeboards**.

If you don’t see a copy, or if you have a safeguarding concern, please notify your **designated CSO** as soon as possible. If your church does not have a CSO appointed, you can contact:

Lauren Baxendale, Circuit Safeguarding Officer safeguarding@telfordmeth.org.uk | 07904 814741

Stephanie Bradley, Regional Officer for Safeguarding bradleys@methodistchurch.org.uk | 07817 808557

By reporting concerns promptly using the new safeguarding reporting form, you help ensure that issues are recorded appropriately, responded to quickly, and escalated where necessary.

Thank you for helping us maintain safe and welcoming places for all.



CHURCH SAFEGUARDING CONCERN FORM

(Any person can complete this form)

PLEASE NOTE: If you are worried about contacting us and giving your details, please be assured that we will do what we can to support you. Please telephone your District Safeguarding Officer and they can talk with you about this. Your District Safeguarding Officer can also help you to complete this form or take details over the telephone.

We can arrange pastoral care for you if you would find this helpful. If you would like this, please tick here or contact your District Safeguarding Officer.

Your details

Name:			
Role/Position:			
Tel:			
E-mail:			
Circuit/District:			
Date:		Time:	

Details of the person you are worried about

Name:			
Address:			
	Postcode:		
Tel:			
E-mail:			
Child or Adult:	Approximate age or date of birth if known:		
Role (if applicable):			
Church/Circuit:			

If the person you are worried about is a child or vulnerable adult, it would be helpful if you could give some details about their carer.

Parent/Guardian/Carer

Name:			
Address:			
	Postcode:		
Tel:			
E-mail:			

Please tell us what you are worried about, when this happened and where:

Could you tell us what action has already been taken (if any)?

Please let us know of any other information you think would be helpful for us to know:

PLEASE NOTE:

We may need to share the information you have provided with other agencies to help ensure the person you are referring and others are safe. If the information is passed on to the statutory authorities your name may be disclosed to the person you are referring.

West Midlands District cares about your privacy and your trust is important to us. Our Privacy Notice explains how Local Churches, Circuits and Districts within the Methodist Church in Great Britain collect, use and protect your personal information. It also provides information about your rights (paragraph 9 of the Privacy Notice) and who to contact (paragraph 1 of the Privacy Notice) if you have any questions about how we use your information. You can find our Privacy Notice online (www.tmcpc.org.uk/about/data-protection/managing-trustees-privacy-notice). Your Circuit Safeguarding Officer will try to deal with any questions as a local point of contact. Alternatively, if viewing this form on line [click here](#) to read our Privacy Notice.

Thank you for completing this form.

The **calling** of the
Methodist Church
is to respond to the
gospel of **God's love**
in **Christ** and to live
out its discipleship in
worship and mission

Our Calling

The **Methodist Church** 