



Telford Methodist Circuit Newsletter

25th June 2026

Foundation Safeguarding Course at Dawley Christian Centre on Tuesday 29th September from 7:30-9:30pm. (Registration from 7:15pm).

Methodist Safeguarding Training: Which safeguarding training am I required to attend?

The safeguarding training offered by the Methodist Church includes the **Foundation** and **Advanced** Modules. Please see the document below for details of who needs to attend which level of training.

[What level of safeguarding training is needed - May 2026](#)

Safeguarding training must be renewed every four years: this only applies to the highest level of safeguarding training required. Everyone must attend Foundation Module once. However, for roles that then require completion of the Advanced Module, this must be completed within 6 months of starting in the applicable role. Renewing training will then only be at the higher, Advanced Module, level until the individual is no longer in an applicable role, when training requirements will be reviewed.

Further details for participants about each module and the ways training can be accessed are included on the participants webpage for each course below.

Foundation Module Training [Foundation Module 2024 Edition \(participants\) - The Methodist Church](#)

The Foundation Module can be accessed either in an in-person setting, in a group on Zoom or by online self-study via MCBX. It is recommended anyone who is completing the course for the first time should attend an in-person course, as some items may trigger difficult memories.

[Training - The Methodist Church](#)

Prayer for the Venezuelan Earthquake Victims

We come boldly before your throne of grace to ask for your mercy and love, oh Lord, thank you for your mercy upon the beautiful nation of Venezuela

We pray for all of those who have fallen victim to this terrible earthquake. We pray that you comfort them, that you provide for them, that they would know that you are with them, that you never leave them or forsake them.

We pray, Lord, that you would be their strength, that despite the situation they find themselves in, they would draw hope and courage, strength and encouragement from the support they receive from neighbouring countries, from churches, and from their own government within Venezuela.

We pray, Lord, that those who have survived the earthquake would be sustained by your grace, that they would receive provision, comfort, and peace, and that they would continue to hold on to hope in the midst of such difficulty and loss.

We pray that any people who are waiting to be rescued would be sustained and that your Holy Spirit would guide the rescue workers to their location.

We pray for the Methodist Christian Community in Venezuela. We pray that you would give them wisdom to respond in the most effective way possible to this tragedy, sharing the love and hope of Christ Jesus with affected communities.

In Christ's name we pray.

Amen.

Eco News from the Telford Circuit



“In the same way, faith by itself, if it is not accompanied by action, is dead.” *James 2:17*

During the months of June and July we are re-visiting our shared Telford Circuit ‘Eco Commitments’ and this week we focus on our gentle encouragement of one another to reflect on our lifestyle choices – both as individuals and as church families. This is not meant to be a piling on of guilt, but an encouragement to make, sustain and celebrate good, healthy, loving choices in our daily lives together. Just like the mustard seed, we start with small, sustainable changes.

Living as God’s representatives on

Money, money, money! Individually and in our church council meetings we can ask questions about who is looking after our money and what they are doing with it. Money Saving Expert suggest the sorts of questions we can be asking as well as listing the most ethical current accounts in the UK [here](#).

Travel is the easiest way to live more sustainably because it involves all the little decisions you make on a daily basis (as well as the bigger journeys you might make annually!) Can some of your meetings be online? Can you lift share more? Can you combine your local trips out so that you drive fewer miles? Are there times you could use public transport?

Food, drink and other consuming... We have committed as a circuit to only using Fair Trade tea and coffee at our meetings; can you do the same as a church? Do you know where fair trade products are sold in your local area and if they are not, can you have conversations with your local grocery stores about providing them? What else are you buying at church which could be more sustainable... can you buy greener cleaning products, sustainable toilet paper and uses vases rather than oasis for your flowers (which you might be purchasing in season from local or Fair Trade sources)?

Communicating the good news

Use your church newsletter, church meetings and pre-worship notices or Local Arrangement services to spread the good news and then sit back and notice how slowly the conversation over coffee is turning greener!

Places to look for inspiration

[Green Christian resources](#) publications, advice and worship materials

[Eco Church A Rocha Lifestyle resources](#) has lots of useful fact sheets

[Climate Stewards](#) have some quick wins for low carbon living

If you would like to talk about this more, contact Jo on jokudlacik@gmail.com

A justice seeking church



Forgive us our debts, as we forgive the debts of others...

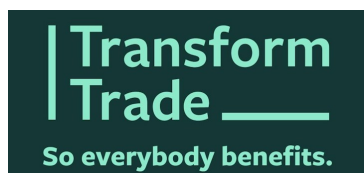
Ann Petifor from **Just Money** talked recently about justice, theology and our economic system. What does our faith say to us about...

- the political influence wielded by those with wealth?
- the justice issues surrounding paying taxes?
- the link to our energy bills?
- economic injustice, inequality and the tricks paid by some of the super-wealthy at our expense and the expense of the most vulnerable?

To watch the webinar click [here](#)

Stories of abuse, dangerous working conditions, and environmental destruction are all too common behind the products we buy in the UK.

This year we have a unique opportunity to bring an end to this.



Transform Trade (formerly Traidcraft) say:
"It's time to end UK companies profiting from human rights abuses."

To find out more and to add the voice of your church to a call for justice, click [here](#)

"Every path holds stories of those who have walked and talked and reflected on it..."

Olaudah Equiano was born a prince in Nigeria in the 18th century, but was enslaved and sold into the transatlantic traffic in enslaved African people. He eventually bought his own freedom, wrote his story and walked and worked around Britain and many parts of the world as a well-known campaigner for the abolition of slavery - a story it is said that John Wesley was reading on his deathbed.

The Equiano Way is a new pilgrimage between Sheffield and Hull (via Epworth) where you can walk, learn, reflect, and connect with his and other powerful stories along the route.



Want to get involved or learn more? Visit methodist.org.uk/about/our-stories/walking-the-walk/

"A Christian life should burn like a candle and spread sweetness like cherries."

Discover Abi's journey to Ordination as a Presbyterian



Abi can't even recall exactly what the leader said that evening at a Sunday School camp many years ago. But he has never forgotten the image.

What if God was asking him to commit his whole life, like a candle burning itself away to give light, like fruit spreading sweetness to others? That, in a sense, was the beginning.



Abi was born and raised in the Church of South India. So why Methodism?

The answer, simply, was **welcome**

When he first came to the UK the Methodist Church felt like home, with a sense of you belong here that he hadn't found everywhere. It was enough to make him stay.

Abi's call was never just a personal feeling; it was tested and confirmed by the people around him.

"Keep your eyes and ears open and listen to what others are saying, because God may be speaking to you through them."

Discover more of Abi's journey at methodist.org.uk/about/our-stories/



New Places for New People and Church at the Margins

Beginning a New Place for New People intro weekend | 6th – 8th Nov 26

What does a pioneer look like? During another session at Cliff Festival entitled *Pioneers are just like you*, we had participants exploring God's call to pioneer in their 70s or asking how God might use their love of cooking to start new Christian communities. Watch the video below to hear from some of the incredibly diverse bunch of folks pioneering in The Methodist Church. Then check out methodist.org.uk/nppn to find out more, contact your district's NPNP Lead, or book yourself into the next *Beginning a New Place for New People* weekend [here](#).

Evangelism

Resources to help your church share faith at Pride

It's Pride month, bringing lots of opportunities to share the love of God that includes all people. Whether you'll be waving a placard dressed head to toe in rainbows and glitter or simply handing out skittles and cheering from the sidelines, check out [this page](#) for guidance and resources to help you and your church share Jesus as part of the LGBTQIA and ally community.

Church growth and transformational leadership

Taizé trip for young adults | 25th July – 3rd August 2026

If you're 17 – 25 years old, how about a week in rural France with other young adults from around the world? The Darlington Methodist District is organising a visit to the Taizé Community: a group of Christians from different traditions who live together in a simple way to show unity and peace. You'll share in prayer, reflection and conversation, with space to explore faith and life's big questions together. Thanks to generous funding, the cost is just £150. [Contact Joel Baldry](#) ASAP to register your interest, or forward this email to a young adult you know who'd love this opportunity.

Discipleship: A Methodist Way of Life

New Methodist enquirers' course: *On The Way*

If you're looking for resources to help folks explore Christian faith for the first time, refresh their faith, or prepare for church membership, check out *On The Way*. Rooted in A Methodist Way of Life, it's a short course to help people explore faith as something lived and practised – not just believed – through short films, discussion questions, participant journals and mini-adventures to try between sessions. *On The Way* is designed to be welcoming, flexible and adaptable for a wide range of settings. Download resources and order your journals at methodist.org.uk/

Coming to the Conference

The 2026 Conference will take place at the Telford International Centre, International Way, Telford TF3 4JH. The nearest railway station is Telford Central, a 15-minute walk or short taxi-drive away. The nearest airport is Birmingham International, with rail connections from Birmingham International Station.

As well as its 225 representatives and 16 associate members, the Methodist Conference welcomes interested visitors and anyone may attend the open Conference sessions, visit the exhibition or attend fringe events. There are very few closed sessions and these are clearly indicated in the agenda.

Visitors do not need a ticket **except** for the Opening of the Conference on the afternoon of Saturday 27 June and Reception into Full Connexion and Sunday Worship on Sunday 28 June. You will also need a ticket if you wish to attend one of the Ordination services on Sunday afternoon.

Tickets are free and you will be able to book online on this website from April.

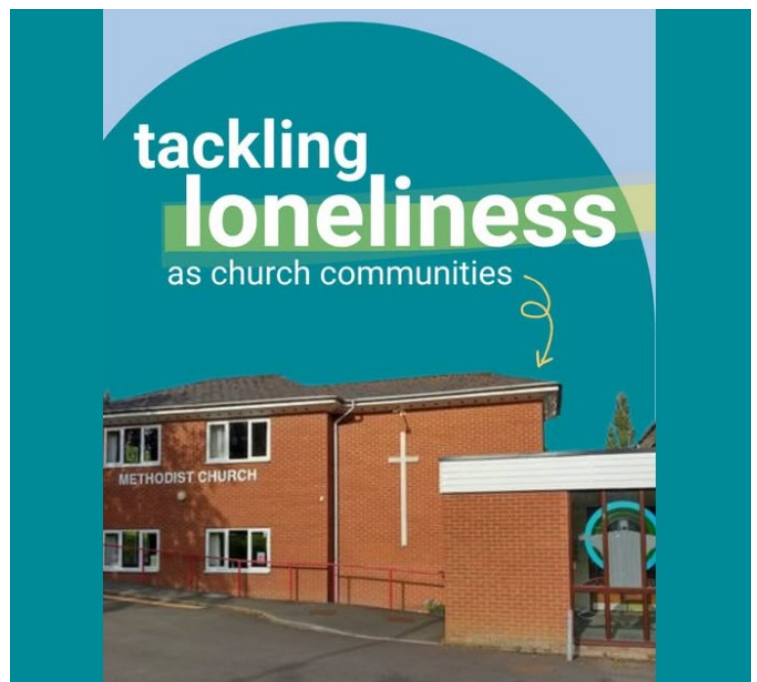
[Coming to the Conference - The Methodist Church](#)

Tackling Loneliness as Church Communities

Loneliness affects people of all ages from all backgrounds. It's described as "the silent epidemic" by loneliness charity The Marmalade Trust and is fast becoming a scourge of modern society.

But people in church communities are playing a valuable role in combating loneliness and isolation.

This National Loneliness Awareness Week, discover how local churches can provide a vital lifeline at <http://methodist.org.uk/.../national-loneliness.../>





Farewell service for Rev Roger Dunlop



As you may have heard, Rev Roger Dunlop will be retiring this summer. Roger joined our Circuit five years ago after a virtual tour (during a COVID stationing) and has been a faithful friend and minister to six churches during that time as well as preaching in other churches across the Circuit and several times on Faith Space and leading the recent District Pilgrimage.

We hope that you will all join us to say 'goodbye' to Roger on 26th July at 4pm at Wellington Methodist Church, where the preacher will be Rev Frances Biseker.

The service will be followed by refreshments. Contributions of cake (preferably on a plate and cut into slices) would be much appreciated.

We look forward to see you there!

Pray with us today.

Lord of all creation, you have written our story with hands of grace. Every chapter filled with mercy. Every verse a melody of love. May our lives sing of your faithfulness. Let our story be a testament of your goodness and our song a sweet offering before your throne. You weave sorrow in strands of gold, turning burdens into blessings unseen. Teach us to sing through every season, to trust when the road is steep, to know that your goodness is the chorus that carries us home.

methodist.org.uk/prayer.



SALE

Every item!



26th June 2026

from 9 - 12 noon

At Dawley Christian Centre

All you keen or would be bakers please

**Join us for Bread Church at
Dawley Christian Centre**

**On Saturday 27th June between
9:30-1:30pm (with a light lunch)**

**On Wednesday 24th June
between 1-3pm**



**Everything will be ready for you to make your
own bread and it's FREE!**

Please come along and give it a go.

Carnival Teas

Saturday 27th June

From 2:30pm



Enjoy a cuppa and a cake, at the Trinity Centre
in Victoria Road.

Great vantage point for the Carnival
Procession!

Proceeds towards Oseddzi Methodist Primary
School Ghana



Donations of cakes and biscuits gratefully received at Trinity on Friday 26/6
from 9:15 - 11:45am. Contact Alison Leath Tel: 07773 508730

SHIFNAL PRIDE CELEBRATION

Reaching out together, to share God's amazing faith, hope and love!

Join us for an inclusive LGBTQ+ affirming service of celebration and diversity, followed by fellowship, tea and cake.

Please bring a flower with you as part of our service!

Together, we create a world where all can love who they choose to love. A journey of embracing all with understanding, equality, unity and respect.

**Sunday
28th June
at 6pm**

**ALL
ARE
WELCOME**

**St Andrew's
Church,
Shifnal**





Bereavement cafe

A support group looking forward, following loss.

Thursday May 14th

Thursday June 4th

Thursday July 2nd

10:30am-12:00pm

The Trinity Centre, Victoria Road, Shifnal

Offering support, understanding & empathy

A small group brought together through loss.

We offer a relaxed, friendly and safe environment to talk with others, share memories and make new friends

Everybody welcome

For further information contact Claire: 07955 688627





THE
BOYS'
BRIGADE



> the adventure begins here

CRAFT

FAYRE



TABLETOP SALE



BOOKS, DVDS AND JIGSAWS

..... ♥
AT

WELLINGTON
METHODIST CHURCH

TF1 1LU



4TH JULY 2026

10AM - 12 NOON

TABLE COST £10

♥ phone Rosemary on 07496 556606 to book ♥

The West Midlands District is inviting everyone to Bloom, their brand new District festival, taking place on Saturday 4 July, 10am–4pm at Trinity Methodist Church in Codsall.

It's a day for all ages, bringing people together from across the District for worship, workshops, creative activities and conversation.

The theme is *Rooted & Growing*, exploring our Methodist roots and how we continue to grow together in Christ.

There'll be a wide range of things to get involved in throughout the day, so do take a look at their website/scan the QR code on the screen if you'd like to find out more or book a place.

Visit wmmethodists.org.uk/bloomfestival.html or scan the QR Code to find out more and to book tickets:



The graphic features a stylized white tree on the left against a green background with faint leaf patterns. In the top right corner is the logo for The Methodist Church West Midlands District, which includes a red cross symbol. The main text is centered and reads: "We're going to BLOOM" in large white and maroon letters, followed by "West Midlands District Festival | Sat 4 Jul 2026" in white, and "and we can't wait!" in large maroon letters. At the bottom, it says "Find out more at wmmethodists.org.uk/bloomfestival.html" in white.

You can access the full communications pack here: [Bloom Comms Pack](#)

You can find out more about Bloom here: <https://canva.link/bloomfestival>

You can book tickets here: <https://www.tickettailor.com/events/wmmethodists/2125950>

People's Emergency Briefing

**Wellington,
Telford & Wrekin**

Film Screening and
Discussion

Thursday 9th July
7:00 for 7:30pm

All Saint's Church, Church St, Wellington
TF1 1DG

Supported by Telford & Wrekin Council



www.nebriefing.org

You are invited to attend a screening of The People's Emergency Briefing

An eye-opening film featuring nine leading UK scientists and experts updating us on the latest in the climate and nature crisis and its impacts on everyday national life.

Including:

- extreme weather
- food security
- health
- cost of living

Based on the National Emergency Briefing in Westminster, as covered by ITV, C4, and the Times. Followed by a short open discussion about what we can do and what it means locally.

Featuring Chris Packham, Deborah Meaden, surprise guests, and a wide range of Brits.

Come along and bring a friend.
Refreshments available from 7pm.
Film starts at 7:30pm, to be followed by an informal, supportive discussion.
Limited free parking is available at the church.
Ample free parking is available nearby.

Telford Debt

christians
against
poverty

Centre

Invites you to a

SUMMER
party
GARDEN

Saturday 11th July

1.30 - 5.30 pm

Wellington. TF1 6PG

(Full address from Rita when booking)

Tickets £12

Available from rita_church@sky.com

or phone/text: 07815864568

*Enjoy a delicious savoury and sweet
buffet throughout the afternoon, whilst finding out
more about our work.*

WELLINGTON METHODIST CHURCH ART GROUP

ART EXHIBITION

We are holding an Art Exhibition of local artists' work
Do come along and see the display. Admission is FREE



2026

Friday 17th and Saturday 18th July

10am - 3pm each day

Tea, coffee and home-made cakes throughout each day

All proceeds from the Art Exhibition, after expenses,
will be donated to Wellington Methodist Church

Our art exhibition is
open to all artists,
all abilities; it's a
wonderful opportunity
for art to be enjoyed
in our community

Why not exhibit YOUR work?

For entry forms and more details contact
Barbara Murray on 07592 881108 or
email Linda Carter on lindap8080@gmail.com
Entry forms to be returned to Barbara Murray
by Friday 27th June latest

The **Methodist Church** 

Wellington Methodist Church New Street, Wellington, Telford TF1 1LU
UK registered charity no. 1130091

Calling YOUNG artists

WE ARE
HOLDING
AN....

ART

& Art competition
for young people

EXHIBITION

The Art Group at Wellington Methodist Church are holding an art competition again for young people (up to age 16). **The theme for your piece of art is**

SUNFLOWERS

Prizes will be awarded for each age category, and will be announced at 2.30pm, Saturday 18th July. All pieces will be displayed in the exhibition.

To enter, please complete and return the tear-off section of this letter.

Friday 17th and Saturday 18th July 2026

For more details contact Barbara Murray on
07592 881108 or email barbaraqsc@gmail.com

To exhibit your work please complete the tear-off section of this entry form with child's name, parent/guardian's contact details and return to the Methodist Church by Friday 26th June.

One piece of art per young person (up to and including age 16), **MAXIMUM SIZE: A3 (297 x 420mm), UNFRAMED, to be delivered to the Church by Tuesday 7th July at the latest, between 11am - 12pm.**

Please write title (or description) of picture, name and age of artist, in capital letters on reverse of picture.

Prizes and certificates can be collected as they are announced at 2.30pm on Saturday 18th July.

Pictures can be collected when the exhibition closes on Saturday between 3pm - 3.30pm. Please note that while every care will be taken to ensure the safety of all artwork in the exhibition, all works are displayed at the owners own risk.

.....
First name Surname Age

Telephone Email

Title (or description) of picture

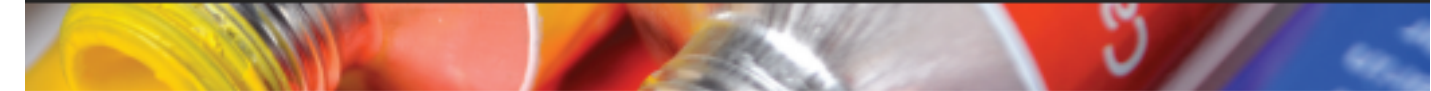
Personal information you give on this form will be treated in the strictest confidence and will not be transferred to any digital database, except for your email address which may be used only to contact you personally with any information concerning Wellington Methodist Church Art Group, if you tick the box below giving the Art Group permission to contact you via email in the future. This form will be retained by WMC Art Group until the end of the exhibition 2026 and then destroyed. If you wish to stop receiving emails from WMC Art Group please contact Barbara Murray on 07592 881108 or email barbaraqsc@gmail.com

Please tick box to give Wellington Methodist Church Art Group permission to contact you via email.

I understand that I exhibit my artwork at my own risk.

The Methodist Church
UK registered charity no. 1130091

Signature of parent/guardian Date



Our art exhibition is open to all artists,
all abilities; it's a wonderful opportunity
for art to be enjoyed in our community

ART EXHIBITION 2026

Dear Artist

Once again Wellington Methodist Church Art Group is planning to hold an Art Exhibition and this year it will be held at the Church on **Friday 17th and Saturday 18th July 2026 from 10am to 3pm each day**. We hope we can interest you in exhibiting some of your work. Pieces can be 2D or 3D, in any media including photography.

To exhibit your work **please return an Entry Form to the Methodist Church by Friday 26th June** at the latest, so that we can produce the catalogue. No late entries will be accepted. If you would like us to send you an Entry Form please email **Linda Carter on lindap8080@gmail.com**

As with all exhibitions, and especially with all the safety precautions we continue to undertake, we are asking artists for a **minimum entry fee per piece of £5** to exhibit. This will be collected when artwork is handed in. **Please deliver your artwork to the Church on Thursday 16th July, from 10.30am to 12pm and attach a label to the back of each piece of artwork with your name and title of piece.** You can display up to a maximum of three works, none of which should have been displayed before in one of our exhibitions. If you wish to sell your work we ask for prices to be a minimum of £20. If you prefer not to sell your work, only one piece can be exhibited as not for sale. Limited hanging space may restrict the number of artworks exhibited. We therefore reserve the right to display less artworks in the exhibition than submitted. It may be necessary to display some items on tables.

Maximum size (including frame): 24" x 20", 60cm x 50cm, pictures need to be framed and fitted with D rings and cord. Please check that when hung the **cord is not visible above the top of the frame**. Display labels will be produced to go with your work. A commission of 20% will be charged on any works sold to help cover our costs. Please see Terms and Conditions on back of this letter.

Work must be collected when the exhibition closes on the Saturday between 3pm - 3.30pm or only by prior arrangement on Tuesday 21st July. Please note that while every care will be taken to ensure the safety of all work in the exhibition, all work is displayed at the owners' own risk. Artists are strongly advised to insure their own works as the Church only covers public liability insurance.

We appreciate offers of help with stewarding each day of the exhibition, greeting visitors and being available for enquiries and sales. Refreshments will be served on both days and we would be grateful for any donations of biscuits, small cakes or cakes to slice which can be sold. Please indicate on the Entry Form if you are able to help or contact me directly.

If you have any queries, please don't hesitate to get in touch with me. We look forward to hearing from you. This will be our 16th Art Exhibition. Our past exhibitions have been a great success and with your support, this one will be as well.

Barbara Murray
On behalf of Wellington Methodist Church

WELLINGTON METHODIST CHURCH ART GROUP

CONTACT: Barbara Murray
New Street, Wellington, Telford TF1 1LU
Telephone 07592 881108
Email barbaraqsc@gmail.com
www.wellingtonmethodist.org.uk

Find us on Facebook 

All proceeds from the Art Exhibition, after expenses,
will be donated to Wellington Methodist Church


The **Methodist Church**
UK registered charity no. 1130091

ART EXHIBITION 2026

Friday 17th and Saturday 18th July
10am to 3pm

Terms and Conditions

The exhibition is open to all artists local to Telford.

To exhibit your work, please return this Entry Form to the Methodist Church by Friday 26th June.

Please deliver your artwork to the Church on Thursday 16th July, from 10.30am to 12pm. We are asking adult artists for a **minimum entry fee per piece of £5** to exhibit, as handed in.

All work must be unwrapped on delivery, with any packaging taken away.

All artwork is displayed at the owners' own risk.

Work must be collected when the exhibition closes on the Saturday between 3pm - 3.30pm or only by prior arrangement on Tuesday 21st July.

A maximum of three works may be submitted, none of which should have been displayed before in one of our exhibitions. If you wish to sell your work we ask for prices to be a minimum of £20. If you prefer not to sell your work, only one piece can be exhibited as not for sale.

Only original artwork can be entered; artwork created from a kit will not be accepted. If the piece is a copy of another artists work this is acceptable but the title must include a reference to the original artist as After Artist's Name.

Maximum size (including frame): 24" x 20", 60cm x 50cm, pictures need to be framed and fitted with D rings and cord. When hung the **cord must not be visible above the top of the frame**. Alternatively, pictures can be supplied mounted, if covered with cellophane.

Limited hanging space may restrict the number of artworks that can be exhibited. We therefore reserve the right to display less artworks than submitted. Please note that Wellington Methodist Church have the option to exclude works from the exhibition which might offend, and please note that photography will be allowed in the exhibition but visitors will be made aware that all images are subject to copyright.

A 20% commission will be taken on all work which is sold to help cover costs. Payment to artists for sold works will be by cheque.

If you would like to donate any of your greetings cards to sell for Church funds, please hand in when delivering your artwork. Unfortunately we are unable to sell cards on behalf of an artist.

Data Protection

Personal information you give on your Entry form will be treated in the strictest confidence and will not be transferred to any digital database, except for your email address which may be used only to contact you personally with any information concerning Wellington Methodist Church Art Group, if you tick the box on your Entry form giving the Art Group permission to contact you via email in the future. Your Entry form will be retained by WMC Art Group until the end of the exhibition 2026 and then destroyed. If you wish to stop receiving emails from WMC Art Group please contact Barbara Murray on 07592 881108 or email barbaraqsc@gmail.com

Please return your ENTRY FORM to Barbara Murray by Friday 26th June latest


WELLINGTON METHODIST CHURCH ART GROUP New Street, Wellington, Telford TF1 1LU

Telephone 07592 881108 Email barbaraqsc@gmail.com

www.wellingtonmethodist.org.uk

Find us on Facebook 

All proceeds from the Art Exhibition, after expenses, will be donated to Wellington Methodist Church

The **Methodist Church** 
UK registered charity no. 1130091

WELLINGTON METHODIST CHURCH
 Minister: Rev. Roger Dunlop

ART EXHIBITION 2026

ENTRY FORM

To exhibit your work, please return this Entry Form to the Methodist Church by Friday 26th June.

Please deliver your artwork to the Church on Thursday 16th July, from 10.30am to 12pm.

Work must be collected when the exhibition closes on the Saturday between 3pm - 3.30pm or only by prior arrangement on Tuesday 21st July.

Friday 17th and Saturday 18th July
10am to 3pm

First name Surname

Please note, if your work has sold, cheque will be made payable to you, as your name above, and your name will appear in the catalogue as this unless you request otherwise

Telephone Email

Title (or description) of work *Please list in alphabetical order, 25 characters maximum	Media	Approximate size (cm)	Sale price/ Not for sale*

*Please note, only one piece can be exhibited as not for sale

IMPORTANT: Please attach a label to the back of each artwork with title and your name

See exhibition letter for Terms and Conditions, and information regarding Data Protection

Please tick box to give Wellington Methodist Church Art Group permission to contact you via email

I understand that:

- Adult artists are asked for a minimum entry fee per piece of their artwork of £5 to exhibit
- I exhibit my work at my own risk and that a 20% commission will be taken on all work which is sold
- I give permission for a photograph of my work to appear in WMC Art Exhibition publicity and their web site

Artist's signature Date.....

Please place a tick in the boxes below if you are able to help with stewarding or refreshments.

Donation of cakes or biscuits?				
Friday 17th July steward/refreshments	10am - 12pm	12 - 1pm	1 - 3pm	
Saturday 18th July steward/refreshments	10am - 12pm	12 - 1pm	1 - 3pm	

Please return your ENTRY FORM to Barbara Murray by Friday 26th June latest

WELLINGTON METHODIST CHURCH ART GROUP New Street, Wellington, Telford TF1 1LU

Telephone 07592 881108 Email barbaraqsc@gmail.com

www.wellingtonmethodist.org.uk

UK registered charity no. 1130091

All proceeds from the Art Exhibition, after expenses, will be donated to Wellington Methodist Church.



HeartSpace

worship for today

HeartSpace on Sundays

10:30am

Trinity Centre

Upcoming Dates

No HeartSpace on Sunday in May

(You are welcome to join us at Upton Magna Village Hall at 11:00am)

Sunday 21st June

Sunday 19th July



Contact:

heartspace@shifnalbenefice.org.uk



Reaching out together to share God's amazing faith, hope and love!



A Prayer Meeting is held at Horsehay Methodist Church on the first Thursday of each month

For the Autumn/Winter months, the meetings will start at the earlier time of 2.30pm



Motown

Daytime Disco

Also featuring hits from the '50s - '80s



Only
£5.00

Raising funds to
support
local older people

Saturday 25 July

1.00 - 4.00pm

**Hadley Community Centre
30 High St, Hadley TF1 5NL**

For more info contact:

t: 01743 233 123

e: fundraising@ageukstw.org.uk

 Shropshire
Telford & Wrekin
ageUK
Let's change how we age

★ Light refreshments

★ Themed mocktails

★ Raffle

Supported by Local Councillor Julie Kaur

Circuit Prayer Space

Circuit Prayer Space on a Monday morning at 8:30am.

Val Smith is inviting you to a scheduled Zoom meeting.

Topic: Circuit Prayer Meeting

Time: This is a recurring meeting Meet anytime

Join Zoom meeting:

[https://zoom.us/j/96716434790?
pwd=RTZZa210Q1ZOWCtLTWk3NHoyWDVIQT09](https://zoom.us/j/96716434790?pwd=RTZZa210Q1ZOWCtLTWk3NHoyWDVIQT09)

Meeting ID: 967 1643 4790

Passcode: 355690

God loves you
unconditionally, no strings attached.
That's the good news.

Faith Space - An online service for all

Starts at 6:30pm on the link below.

Weekly zoom services for anyone and everyone wherever in the world you are!

Join Zoom meeting:

[https://zoom.us/j/95651019665?
pwd=bGgyVEdvQ0cvNDRpWm5HTVB0UDRmdz09](https://zoom.us/j/95651019665?pwd=bGgyVEdvQ0cvNDRpWm5HTVB0UDRmdz09)

Meeting ID: 956 5101 9665

Passcode: 395669

God bless you all and see you soon!



Bible Studies in the Circuit

Circuit Online Bible Study

Bible study on Mondays at 1:30pm.

Please click on the link below.

<https://zoom.us/j/95651019665?pwd=bGgyVEdvQ0cvNDRpWm5HTVB0UDRmdz09>

Please join us as we work our way through Matthew. Matthew was very good at keeping records and his account of spending time with Jesus and growing as a Christian himself, is very inspiring. All are welcome.

Meeting ID: 956 5101 9665

Passcode: 395669

Admaston meet on the 2nd Tuesday of the month between 10-11:30am.

They currently meet in the home of one of the church family but if the numbers increased they would be happy to transfer the bible study to church.

Cartway, Bridgnorth has 3 bibles study groups.

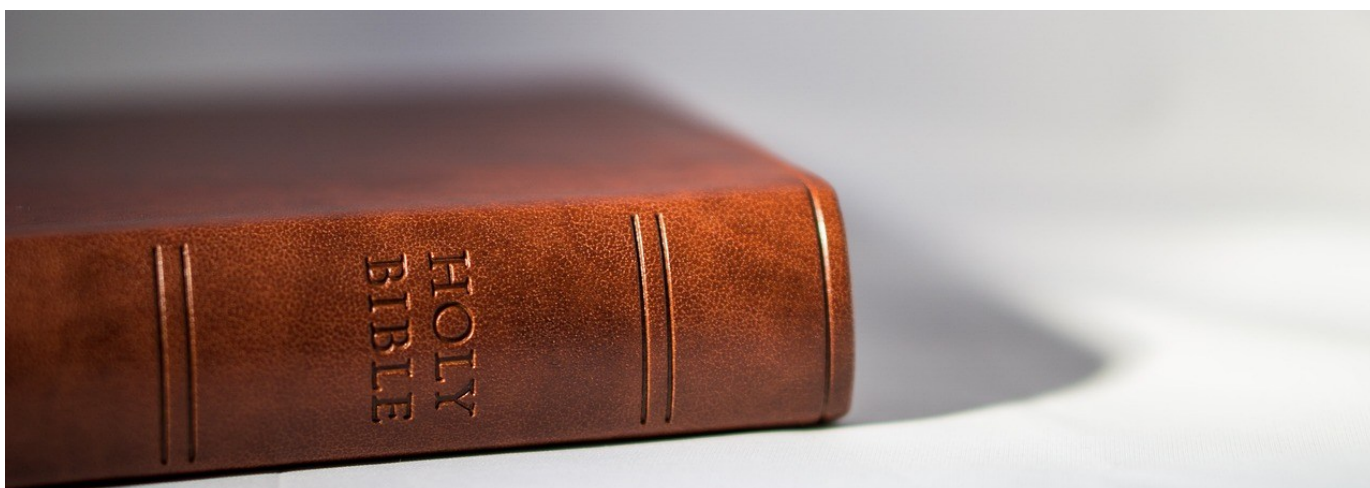
Shambles Group meet on 2nd Monday of the month at 10:30am

Orchard House Group meet on 3rd Monday in the month at 10:30am

Greenfields Group meet 3rd Tuesday in the month at 2pm.

Dawley - Bible study group meets for two 5-6 weekly sessions each year. One during Lent the other during Advent.

Dunwell - Has a bible study before church service each Sunday (Service starts at 10am)



Spiritual Abuse Awareness training dates 2026



Spiritual Abuse Awareness Training

Developed by the Methodist Church Safeguarding Team, Learning Network and Survivors Group in conjunction with Dr Lisa Oakley, Chester University & Thirtyone.eight

Course overview:

- What is spiritual abuse?
- What is the impact of the experience
- How to build healthy cultures

10.30 – 15.30

29th January 2026

4th June 2026

24th September 2026

19th November 2026

on Zoom

To book your place, please follow this link:
<https://imethodist-spiritual-abuse-training.eventbrite.co.uk>

For more information please contact Christine Kennedy (ckennedy@methodistchurch.org.uk)
Bridget Down (bridget@methodistchurch.org.uk) or David Knight (davidk@methodistchurch.org.uk)

The Methodist Church

We are pleased to announce 4 new dates for the Spiritual Abuse Awareness Training in 2026:
29 January

4 June

24 September and

19 November

All the sessions are on Thursdays, from 10.30 – 15.30

To book, please use the Eventbrite link: [Book on Eventbrite for Spiritual Abuse Awareness training](https://imethodist-spiritual-abuse-training.eventbrite.co.uk)

See the [Spiritual Abuse - The Methodist Church](#) webpage for further details.

Download a poster [Spiritual Abuse Awareness training poster](#)

Please get in touch if you have something to share.

Email:

circuitsupport@telfordmeth.org.uk

or phone 01952 505108



Can you provide a plain cotton T Shirt (both for men and woman) to someone in a mental health institution (Pantang Psychiatric Hospital) in Ghana?

The newly inaugurated Sussanah Wesley Mission Auxiliary (SUWMA) within the congregation of Dunwell Methodist Church, Ketley are making their Easter project to provide clothes to the people who are living in Pantang Psychiatric Hospital. They would very much welcome your support. Very often, when families take their loved ones to the institution, they are just left there. They don't get any visitors and there's little hope of them ever leaving. Their families don't provide for them, so it's left to a few people to look after them. And they are struggling.

People taken to the institution include those who have had a breakdown, life in Ghana can be very hard and people struggle to cope.

We can help make their lives more comfortable and respect their dignity by providing clothes. It's very hot in Ghana so cotton T shirts are ideal.

If you can help please pass your T shirts on to a Church Steward and we will arrange a way to collect them. Thank you.

Best sizes to buy/donate would be size 14 and above for woman.

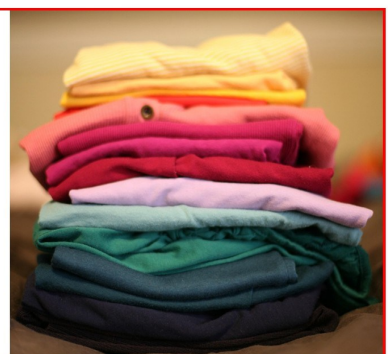
Large for men.

Bright beautiful coloured T shirts would certainly brighten their day!

Any help would be greatly appreciated.

Feel free to add a note too which could be read to our friends in Ghana.

It's a wonderful way to show love to a stranger.





Albrighton Methodist Church

Regular church activities

Cafe Central

Every Thursday 10.00 to 12.00

Excellent coffee!
Meet with friends, old and new.



Monthly Cafe

First Saturday in the month 10.00 to 12.00

With high quality bric-a-brac and book stalls.



Open Door

First Tuesday in the month
7.30 to 9.00

Wide variety of speakers ranging from singing, wildlife, travel logs, health related.....



£2 per head. Speaker usually puts fees to a charity.



UPDATE!



Telford Methodist Circuit
International Project 2026
together with

Ajumako Osedzi Methodist Primary School,
Ghana

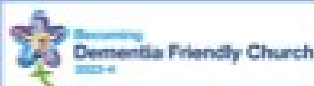


Our aims:

- 1) the provision of an outside canteen
- 2) the renovation and repainting of the classrooms & offices

Can you help us raise £6500 by the end of 2026?

Thank you for the £1650 already donated!



Bringing us together to share
God's amazing faith, hope and love.

Forget me not Group
for people affected by dementia.
**Third Thursday of
the month at 2:00pm**
Come and join us - there's a warm
welcome and a friendly atmosphere.

For more information, or for if you want to have a
conversation about memory difficulties or
dementia, contact Sarah Thorpe on 07982 248949 or
sarah.thorpe121@gmail.com

You're invited to join us ...

1st Wellington Boys' Brigade and Girls' Association

Where: Wellington Methodist Church, TF1 1LU

When: Wednesday evening 5:30 to 7pm

Who: Boys & girls, ages 5 to 11

Why: **Join the Adventure!**

What: Lots of things ...

Play Games – Craft activities
Learn new Things - Meet new friends
Learn about the Christian Faith
Table Tennis – Having fun
Music – Competitions – Badgework
Baking – Football – Dodgeball

THE BOYS' BRIGADE & GIRLS' ASSOCIATION
the adventure begins here

Call or Whatsapp
Company Leader
Alastair Batrick
07977 508723

Coffee Morning at Cartway Methodist Church, Bridgnorth

On the 1st Saturday of each month between 10am –12 midday there is a Coffee Morning at Cartway Methodist Church.

There's going to be a great raffle,.

All are welcome.



Wellington Methodist Church

Are Craft and Chat Group meet on the 2nd & 4th Friday of each month from 10am-11:45am.

There is a small charge but this does include a drink

You are welcome to drop in any time.

Everyone is welcome.



Coffee Mornings at Horsehay

**Every Wednesday:
10.30am - 12.00 noon**

**Join us for tea/coffee,
fellowship and lots of
chat and laughter!**



Ladies' Fellowship at Horsehay Second Tuesday of each month

in the vestry @2.30pm

ALL WELCOME - BRING A FRIEND!

Painting for Pleasure at Horsehay Methodist Church

Informal art groups (no tutor, but lots of chat and helping each other with tips and techniques). Whatever your skill level, if you enjoy drawing and/or painting, why not come and join us? **Thursday and Friday mornings** 10.00 - 12.30. £5.00 per session.

Wool Wanted

If anyone has any spare balls of wool they don't need, can you let Sharon (01952 505108) in the Circuit Office know please?

At Dawley we are making knitted and crocheted blankets for the dementia patients at the Princess Royal Hospital.

The colourful blankets help patients, particularly those with dementia, to find their way back to bed more easily – and also see the edge of the bed more clearly when getting in and out. They also provide a more homely feel to the wards. Thank you.

[Calling all knitters: blankets wanted for patients with dementia – SaTH](#)



Bereavement Cafe

A monthly opportunity to meet and chat with others who have been bereaved, hosted by members of local churches.

Second Monday of each month

2:30-4:00pm

Wellington Methodist Church



I wanted to share a quick update regarding our safeguarding contacts within the Connexional Team. As some of you may already be aware, Sue Holder has now retired after 12 years in her role, and Neil Hutchinson has taken over from her.

Neil will be working 21 hours, generally Monday to Wednesday. Steph Bradley remains our main Regional Officer for Safeguarding, working 33 hours across the week. However, both can be contacted out of office hours for any urgent safeguarding matters.

Please update your records with their contact details below:

Neil Hutchinson
Email: hutchinsonn@methodistchurch.org.uk
Mobile: +44 (0) 7384 810901

Steph Bradley
Email: bradleys@methodistchurch.org.uk
Mobile: 07817 808557

Safeguarding
Young people and vulnerable adults

If there are any further changes, I will let you know.

Lauren

Safeguarding Training – Now Available Online

The Safeguarding Foundation Course is now available online via [MCBX](#), making it easier than ever for church members to complete their safeguarding training.

This flexible option is ideal for those who find it difficult to attend face-to-face sessions, as the course can be completed at your own pace. MCBX (mcb.theologyx.com) is the Methodist Church's online learning platform, providing access to safeguarding training, supporting materials, and a downloadable certificate on completion.

This online course complements, rather than replaces, face-to-face and participatory training, which continue to be an important part of safeguarding learning.

If you need to complete the Safeguarding Foundation Course, please speak to your Church Safeguarding Officer for further guidance.



Lauren Baxendale
Circuit Safeguarding Officer

Dawley Christian Centre, High Street, Dawley, Telford, TF4 2EX
07904 814741
Safeguarding@telfordmeth.org.uk | www.telfordmeth.org.uk

Advanced Safeguarding Module Training

The District has updated the booking arrangements for Advanced Safeguarding Module training courses.

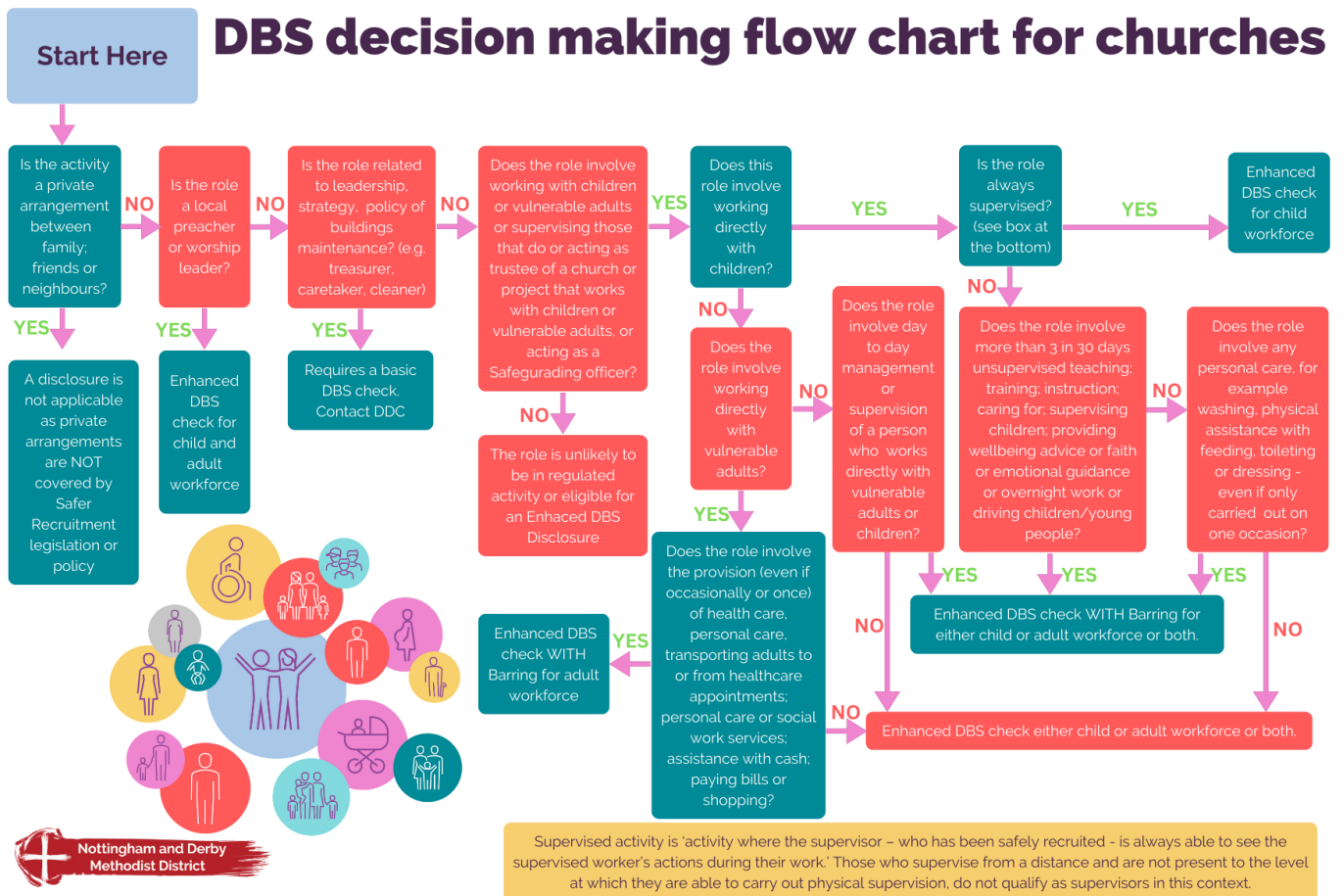
Anyone who is required to complete the Advanced Module, or renew their training, should use the current District booking link to view available courses and make a reservation. Courses are available both face-to-face and via participatory Zoom sessions.

For details of current course dates and to make a booking, please use the following link:

[Stephanie Bradley](#)

Many thanks,

Lauren



New Safeguarding Reporting Form

Safeguarding is everyone’s responsibility, and clear communication is key to keeping our community in the Telford Methodist Circuit safe and supported.

A new **Safeguarding Reporting Form** is now in use across the Circuit. Copies have already been shared with your **Church Safeguarding Officers (CSOs)** and should shortly be **appearing on the Circuit website and your church safeguarding noticeboards**.

If you don’t see a copy, or if you have a safeguarding concern, please notify your **designated CSO** as soon as possible. If your church does not have a CSO appointed, you can contact:

Lauren Baxendale, Circuit Safeguarding Officer safeguarding@telfordmeth.org.uk | 07904 814741

Stephanie Bradley, Regional Officer for Safeguarding bradleys@methodistchurch.org.uk | 07817 808557

By reporting concerns promptly using the new safeguarding reporting form, you help ensure that issues are recorded appropriately, responded to quickly, and escalated where necessary.

Thank you for helping us maintain safe and welcoming places for all.



CHURCH SAFEGUARDING CONCERN FORM

(Any person can complete this form)

PLEASE NOTE: If you are worried about contacting us and giving your details, please be assured that we will do what we can to support you. Please telephone your District Safeguarding Officer and they can talk with you about this. Your District Safeguarding Officer can also help you to complete this form or take details over the telephone.

We can arrange pastoral care for you if you would find this helpful. If you would like this, please tick here or contact your District Safeguarding Officer.

Your details

Name:			
Role/Position:			
Tel:			
E-mail:			
Circuit/District:			
Date:		Time:	

Details of the person you are worried about

Name:			
Address:			
	Postcode:		
Tel:			
E-mail:			
Child or Adult:	Approximate age or date of birth if known:		
Role (if applicable):			
Church/Circuit:			

If the person you are worried about is a child or vulnerable adult, it would be helpful if you could give some details about their carer.

Parent/Guardian/Carer

Name:			
Address:			
	Postcode:		
Tel:			
E-mail:			

Please tell us what you are worried about, when this happened and where:

Could you tell us what action has already been taken (if any)?

Please let us know of any other information you think would be helpful for us to know:

PLEASE NOTE:

We may need to share the information you have provided with other agencies to help ensure the person you are referring and others are safe. If the information is passed on to the statutory authorities your name may be disclosed to the person you are referring.

West Midlands District cares about your privacy and your trust is important to us. Our Privacy Notice explains how Local Churches, Circuits and Districts within the Methodist Church in Great Britain collect, use and protect your personal information. It also provides information about your rights (paragraph 9 of the Privacy Notice) and who to contact (paragraph 1 of the Privacy Notice) if you have any questions about how we use your information. You can find our Privacy Notice online (www.tmcpc.org.uk/about/data-protection/managing-trustees-privacy-notice). Your Circuit Safeguarding Officer will try to deal with any questions as a local point of contact. Alternatively, if viewing this form on line [click here](#) to read our Privacy Notice.

Thank you for completing this form.

The **calling** of the
Methodist Church
is to respond to the
gospel of **God's love**
in **Christ** and to live
out its discipleship in
worship and mission

Our Calling

The **Methodist Church** 