



Telford Methodist Circuit Newsletter

2nd July 2026

**This week the Methodist conferences have been held in Telford (UK),
Methodist Church in Britain.**

The **2026 Methodist Conference** has taken place at the **Telford International Centre, UK, from 25 June to 1 July**. The conference serves as the governing body of the Church, providing a forum for prayerful reflection and decision-making on issues affecting the Church and wider society

Ordinations: 13 presbyters and 2 deacons were received into Full Connexion on 28th with ordinations at Shrewsbury Abbey, All Saints in Wellington, and St John's, Bloxwich

Congratulations to all those received into Full Connexion this week.



Eco News from the Telford Circuit



“Go into all the world and preach the good news to all creation”
Mark 16:15

What has **EVANGELISM** got to do with it?

I know, I used that scary word! But actually, what if we didn't have to split our energy and time between so many different competing priorities? What if, rather than feeling we have too few people and too little energy to get things done, we discovered that there were others out there with energy and passion waiting for the opportunity to join in?

Jesus said...

In Matthew Chapter 10, Jesus sends out his twelve disciples... notice, he sends them **out**, he doesn't ask them to spend their energy putting on events to draw people in! He tells them to stay local and to go to people of peace who will welcome them in; people with whom they can build friendships and share common interests.

To whom shall we go?

So where are the people in our neighbourhoods who are ready to welcome us in, want to get to know us and already share with us a deep care for God's creation? Across our circuit there are groups committed to this work... we don't have to do it all alone, in fact I would suggest that God would love to see us working together with our neighbours!

But we have enough to do! What else can we offer?

As a church

Find out what your local group are doing and offer to pray for them

Share their news in your church notices or newsletter

Offer them a space to meet or hold an event, free of charge. Perhaps offer them refreshments.

Do they have someone who could come and speak to your congregation and encourage you all at a LA service?

As individuals (or better still, in pairs!)

Go along to a meeting, a repair café or another 'green' event

Chat with people and find out what you have in common

Notice what God is already doing and give thanks

A justice seeking church



Some important dates and resources for **July**.

Could you include these in prayers and worship?



Plastic Free July

This global movement encourages and challenges us to 'choose to refuse' plastics during the month of July. When many people make small changes, it adds up to a big difference. Is there a small change you could make?

Could your church hold a 'plastic free picnic'? For more ideas or resources [click here!](#)



24th July is Samaritans Awareness Day

Every 10 seconds of every hour of every day the Samaritans answer a call. 24th July is about raising awareness and funds to continue this precious work. Why this date? Because it is 24/7. For videos and information [click here](#).

30th July World Day against trafficking in persons has a theme this



year of 'Trapped behind the scam'.

We probably all know people who have been tricked by scams and we know how devastating it has been. Fewer of us are aware of the thousands who have replied to job adverts for work abroad and then been transported to illegal compounds where they have been forced to work in fraudulent operations for transnational organized crime

groups. Find out more [here](#).

We pray...

*Bless us with more determination than cynicism,
more resolve than despair,
more passion than apathy.*

*Bless us with restless spirits,
deep longings for justice,
resolve for equality.*

*Bless us with the desire for change,
wisdom to see how to realise it,
and energy to make it happen. Amen*

Local climate action and sustainability groups:

[Climate Action Hub Telford](#) are based in **Wellington**

“We bring people together to inspire eco-conscious living & spark transformative change.”

[Sustainable Newport](#) have a particular focus on reducing plastics. They are keen to make partners in the town and might offer a speaker.

[Transition Telford](#) support community gardens and orchards across the town: *“Taking small community steps to tackle big global issues”*. Could you partner with them to provide a home for wildlife or a community garden space?

[Sustainable Bridgnorth](#) *“Cutting Carbon - Restoring Nature - Saving Money”*

They offer workshops and speakers as well as lots of events and resources around the town.

[Broseley Climate Action Group](#) run swap shops, repair cafés and more...

[Lawley Green Group](#) – a group of local green and community minded residents. Are they still active? If so, a potentially useful ally!

PEOPLE’S EMERGENCY BRIEFING

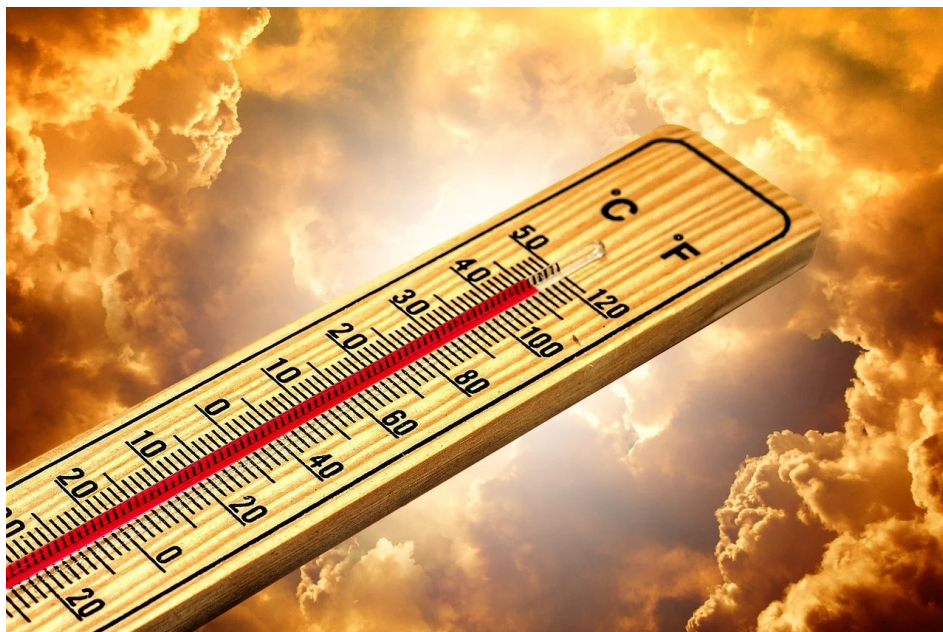
It is not too late to engage with people in the wider community over the climate crisis which is affecting us all. Please support a FREE viewing of this film if you can!

All Saints Church, Wellington, 9 July, at 7.30pm (*refreshments from 7pm, no tickets needed*).

St John's Catholic Church Bridgnorth, 9 July at 7pm [Tickets](#)

Holy Trinity Church, Much Wenlock, 23rd July at 6:30pm [Tickets](#)

If you would like to talk about this more, contact Jo on jokudlacik@gmail.com



A Different Way - Facebook post from Rev Rachel Parkinson

When I began dreaming of these two years of Living in a Different Way, the idea developed in relation to certain aspirations. It included having more time for God, and living in a way in which I'm more in touch with my body and with the creation of which I am a part. But the parameter which has been of greatest significance so far is the one which I included as descriptive as much as aspirational! - Spend more time with Neil.

This week we've marked our 35th wedding anniversary. I don't want to proceed with this reflection on the basis of marriage being some sort of gold standard. As an institution it brings with it its own baggage. But Neil and I are in a covenant relationship, involving an unconditional commitment to each other. When we got married there was a bit of a fashion to rewrite the marriage vows. Our version was "Whatever life may bring, I will love and care for you always". This is a covenant commitment that might also be made with long term friends or with other family members.

But whoever it is that we are in covenant relationship with, within the pressurised context of daily life, we probably have precious little time to spend with them. Since Neil not only worked long hours but also had a significant commute for over 20 years (partly thanks to itinerancy) we had very few hours to spend together each week, and in many of those hours we were dog-tired. It's a massive change going from that to being together 24/7.

Living differently brings into focus what it means to love someone. If you asked me what I mean when I say I love Neil, then quite honestly I'm not sure where to start! Travelling together persuades me that "love" is much more a verb than it is a noun or an adjective. And of course this is where St Paul starts in describing love in his letter to the Corinthians (chapter 13, verses 4-7):

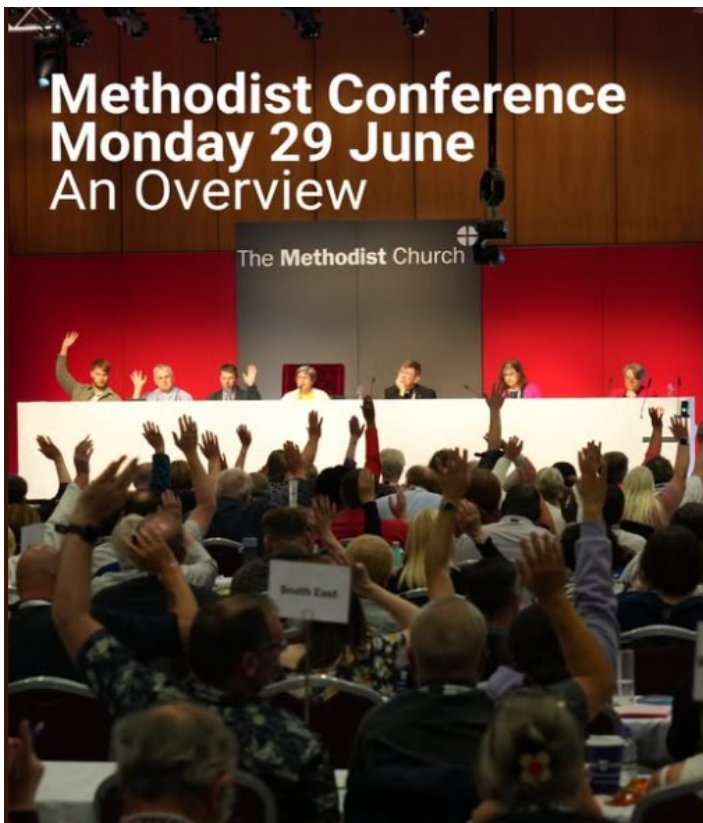
"Love is patient; love is kind; love is not envious or boastful or arrogant or rude. It does not insist on its own way; it is not irritable or resentful; it does not rejoice in wrongdoing, but rejoices in the truth. It bears all things, believes all things, hopes all things, endures all things"

On a daily basis, Neil is the most annoying, frustrating and irritating person in my universe. Quite often this is amusing as it was yesterday, when I put the milk I'd chosen back on the supermarket shelf in favour of his choice (NB what I said earlier about marriage expectations!) It turned out that his "milk" was yoghurt, yet he still served me a cup of tea he'd made with it 🍵. But Neil is simultaneously the most supportive and companionable person in my universe too, and the person I get to share perspectives and experiences with. And the same is true the other way around.

Spending so much longer together is giving us much more daily practice in the exercise of what it means to love someone. That is always time well spent. And I believe that we won't be the only beneficiaries of the extra practice.

There are always worthy and insistent demands on our time. But I'm learning afresh that it's a mistake to always give priority to these over time spent in covenant relationship with those we love. That's where the hardest lessons are learned and the greatest practice is gained.





On Monday 29 June, the Methodist Conference discussed:

- An update on the Justice, Dignity and Solidarity (JDS) Strategy
- Action for Hope
- President and Vice-President Designates 2027
- Online Communion
- Assisted Dying
- 3Generate and the Voices of Children and Young People
- Liturgical Style and Language

Discover an overview of yesterday's Methodist Conference at <http://methodist.org.uk/.../methodist-conference-monday.../>

Assisted Dying

The Conference will receive an update on the Church's position on Assisted Dying, which was requested by last year's Conference. The Methodist Statement on Euthanasia was adopted by the Conference in 1974, expressing its opposition to any steps which would intentionally end a patient's life.

The report states that the 1974 statement is flawed because of the dated language and terms, and the Conference will be offered ways forward to develop a considered position, including further consultation across the Connexion.

The 2025 Conference received a brief report from the Faith and Order Committee on assisted dying. This followed the longstanding public debate regarding this issue, and the introduction of a Private Member's Bill on the subject in the UK Parliament. By resolution 15/ 2, the Conference directed "the Secretary of the Conference, in consultation with the Faith and Order Committee, relevant members of the Connexional Team and appropriate partner organisations, to establish a task group to review the Conference's position with regard to assisted dying and to report to the Conference not later than 2028." As the Faith and Order Committee report outlined, the question of assisted dying is not new, and the Methodist Church has had cause to consider it previously. A statement issued by the Secretary of the Conference on 14 November 2024 set out this background. It stated:

Click on the link to find out more:

[Conference 2026 Agenda](#)

Methodist Conference agrees Net Zero update



The Methodist Conference has received an update on the Methodist Church's Action for Hope work and aspiration to become net zero by 2030.

Representatives heard that progress has been made across the Connexion, but parts of the Church have struggled to develop a robust strategy to meet the target. The report concluded that it would be better to move from the 2030 target while also noting all the progress that has been made.

Read the full update at <http://methodist.org.uk/.../methodist-conference-agrees.../>

Predominantly Online Churches

The Conference will receive a report on how it should make provision for predominantly online churches within the Methodist Church. The report focuses on those communities who wish to become a church and, like any other church, will need to belong to a circuit and to have a presbyter in pastoral charge.

3

The Conference permits presbyters and other persons authorised to preside at the sacrament of the Lord's Supper, when serving communities which have been holding such celebrations as part of the period of discernment in relation to online celebrations of Holy Communion, to lead celebrations of Holy Communion in which some or all of the worshippers gather together through electronic means at a common time.

The Conference directs the Faith and Order Committee, in consultation with the Law and Policy Committee, to create a process for authorising online celebrations of Holy Communion, including appropriate Standing Orders, and to report to the Conference of 2029.

Read the full update at [Conference 2026 Agenda](#)



The Methodist Conference has debated and considered the use of and implications of artificial intelligence (AI) in training and other aspects of Church life.

In 2024, the Conference was asked to consider the implications of AI and its practical and theological impact across the Methodist Church, which was debated by representatives. Read more about the debate at methodist.org.uk/about/news/methodist-conference-debates-ai/

On the Way- Triennial Membership Returns 2023–2025

An in-depth reading of the 2023–2025 statistical returns reveals some important signs of growth. While membership continues to decline, attendance at churches showed some signs of recovery with significant percentages of Methodist churches experiencing numerical growth.

5

Reparative Justice

As directed by the 2021 British Methodist Conference, in response to the memorial M22 (2021) The Transatlantic Slave Trade, the Methodist Church is undertaking a series of research initiatives and collaborating with Partner Churches in West Africa, the Africa Methodist Council, and the Methodist Church in the Caribbean and the Americas as the Church seeks to listen in deep solidarity, walk alongside and honour those processes that some of our partners have in place to consider these questions.

6

Principles for Liturgical Style and Language

In 2025, the Conference adopted the proposal to revise The Methodist Worship Book with a rolling programme of replacing and/or revising existing authorised liturgy. This report to be presented to the Conference sets out the principles needed to guide this work.

7

The Methodist Conference has designated the Revd Dr Jennifer Smith to serve as President and Daniel Keen to serve as Vice-President, starting their year of office when the Representative Session of the Methodist Conference opens in June 2027



The Revd Dr Jennifer Smith

President Designate
of the Methodist Conference



Daniel Keen

Vice - President Designate
of the Methodist Conference

The **Methodist** Church 

Justice, Dignity and Solidarity – First Five Years

The Methodist Conference, meeting in Telford, discussed the progress made in the implementation of the Methodist Church's Strategy for Justice, Dignity and Solidarity (JDS), that was adopted by the Conference in 2021.

The strategy is both a theological statement and a practical framework, based on the belief that all people are created in God's image and therefore worthy of justice, dignity and solidarity.

Read the full update at <http://methodist.org.uk/.../justice-dignity-and.../>

8

**“God is love.
You are loved.
And you are enough”**



“God has a vision, a dream, an imagining of who we could be, how we could be, what we could be – each one of us, all of us together, sharing holiness and demanding justice, making better people and a better world...”

The Revd Mark Slaney, President of the Methodist Conference treated us to a musical performance to open his address, followed by a continuing exploration of this year’s Presidential theme: Sorrow and Joy.

Reflecting on his visit to the Holy Land, he called for us to stand in solidarity and witness - acting for something better, for something just, and something of how we could be together reflecting the image of Jesus.

Read the full address at <http://methodist.org.uk/.../the-presidents-address-to.../>

Meeting at the Methodist Conference, leaders are calling for a just peace for all who call the Holy Land home.

David Thomson, Chief Executive of **All We Can**, the President of the Methodist Conference, the Revd Mark Slaney, Father Fadi Diab, Rector of the Anglican Parish in Ramallah, the Revd David Hardman, Methodist Liaison Officer, Jerusalem and the Revd Dr Jo Cox-Darling, Chair of the Methodist Mission Committee, have announced it’s Time to Act.

While communities across Palestine and Israel live through devastating violence, loss and injustice, many UK churches have remained silent.

Sign the commitment, it is Time to Act.

Visit justpeacecoalition.com/





Farewell service for Rev Roger Dunlop



As you may have heard, Rev Roger Dunlop will be retiring this summer. Roger joined our Circuit five years ago after a virtual tour (during a COVID stationing) and has been a faithful friend and minister to six churches during that time as well as preaching in other churches across the Circuit and several times on Faith Space and leading the recent District Pilgrimage.

We hope that you will all join us to say 'goodbye' to Roger on 26th July at 4pm at Wellington Methodist Church, where the preacher will be Rev Frances Biseker.

The service will be followed by refreshments. Contributions of cake (preferably on a plate and cut into slices) would be much appreciated.

We look forward to see you there!

Pray with us today.

God, who changes not, we trust in you for our todays and tomorrows. We pray for those with responsibility for making key decisions that might change the direction of world or local events. We pray for those affected by the decisions of others, but who feel powerless in the face of forces of change. We commend to you the decisions that have to be made in your Church, and those charged with making them. Take our gifts and talents, voices and musical worship, Lord, and use them we pray in the service of your kingdom. Amen.

John Morton, Supernumerary
Presbyter, Kendal Circuit





THE
BOYS'
BRIGADE



> the adventure begins here

CRAFT FAYRE



& TABLETOP SALE

BOOKS, DVDS AND JIGSAWS



AT

WELLINGTON
METHODIST CHURCH

TF1 1LU



4TH JULY 2026

10AM - 12 NOON

TABLE COST £10

♥ phone Rosemary on 07496 556606 to book ♥

The West Midlands District is inviting everyone to Bloom, their brand new District festival, taking place on Saturday 4 July, 10am–4pm at Trinity Methodist Church in Codsall.

It's a day for all ages, bringing people together from across the District for worship, workshops, creative activities and conversation.

The theme is *Rooted & Growing*, exploring our Methodist roots and how we continue to grow together in Christ.

There'll be a wide range of things to get involved in throughout the day, so do take a look at their website/scan the QR code on the screen if you'd like to find out more or book a place.

Visit wmmethodists.org.uk/bloomfestival.html or scan the QR Code to find out more and to book tickets:



The graphic features a large white tree silhouette on the left side against a dark green background with faint leaf patterns. In the top right corner, the logo for 'The Methodist Church West Midlands District' is displayed, consisting of a red cross symbol and the text 'The Methodist Church' in red, with 'West Midlands District' in white below it. The main text is centered and reads: 'We're going to' in a dark red font, followed by 'BLOOM' in large, bold, white capital letters. Below this, it says 'West Midlands District Festival | Sat 4 Jul 2026' in white. At the bottom, 'and we can't wait!' is written in a large, dark red font, and 'Find out more at wmmethodists.org.uk/bloomfestival.html' is in white.

You can access the full communications pack here: [Bloom Comms Pack](#)

You can find out more about Bloom here: <https://canva.link/bloomfestival>

You can book tickets here: <https://www.tickettailor.com/events/wmmethodists/2125950>

IONA WORSHIP

Jesus was a refugee

A reflective service
using words and music from the
Iona Community

WELLINGTON METHODIST CHURCH

New St., Wellington

Telford TF1 1LU

Sunday 12th July 2026

5pm

ALL WELCOME

www.wellingtonmethodist.org.uk

www.iona.org.uk

People's Emergency Briefing

**Wellington,
Telford & Wrekin**

Film Screening and
Discussion

Thursday 9th July
7:00 for 7:30pm

All Saint's Church, Church St, Wellington
TF1 1DG

Supported by Telford & Wrekin Council



www.nebriefing.org

You are invited to attend a screening of The People's Emergency Briefing

An eye-opening film featuring nine leading UK scientists and experts updating us on the latest in the climate and nature crisis and its impacts on everyday national life.

Including:

- extreme weather
- food security
- health
- cost of living

Based on the National Emergency Briefing in Westminster, as covered by ITV, C4, and the Times. Followed by a short open discussion about what we can do and what it means locally.

Featuring Chris Packham, Deborah Meaden, surprise guests, and a wide range of Brits.

Come along and bring a friend.
Refreshments available from 7pm.
Film starts at 7:30pm, to be followed by an informal, supportive discussion.
Limited free parking is available at the church.
Ample free parking is available nearby.

Telford Debt

christians
against
poverty

Centre

Invites you to a

SUMMER
party
GARDEN

Saturday 11th July

1.30 - 5.30 pm

Wellington. TF1 6PG

(Full address from Rita when booking)

Tickets £12

Available from rita_church@sky.com

or phone/text: 07815864568

*Enjoy a delicious savoury and sweet
buffet throughout the afternoon, whilst finding out
more about our work.*

TABLE TOP SALE

at Dawley Christian Centre

on Friday 17th July 2026

from 9-12 noon



WELLINGTON METHODIST CHURCH ART GROUP

ART EXHIBITION

We are holding an Art Exhibition of local artists' work
Do come along and see the display. Admission is FREE



2026

Friday 17th and Saturday 18th July

10am - 3pm each day

Tea, coffee and home-made cakes throughout each day

All proceeds from the Art Exhibition, after expenses,
will be donated to Wellington Methodist Church

Our art exhibition is
open to all artists,
all abilities; it's a
wonderful opportunity
for art to be enjoyed
in our community

Why not exhibit YOUR work?

For entry forms and more details contact
Barbara Murray on 07592 881108 or
email Linda Carter on lindap8080@gmail.com
Entry forms to be returned to Barbara Murray
by Friday 27th June latest

The **Methodist Church** 

Wellington Methodist Church New Street, Wellington, Telford TF1 1LU
UK registered charity no. 1130091

Calling YOUNG artists

WE ARE
HOLDING
AN....

ART

& Art competition
for young people

EXHIBITION

The Art Group at Wellington Methodist Church are holding an art competition again for young people (up to age 16). **The theme for your piece of art is**

SUNFLOWERS

Prizes will be awarded for each age category, and will be announced at 2.30pm, Saturday 18th July. All pieces will be displayed in the exhibition.

To enter, please complete and return the tear-off section of this letter.

Friday 17th and Saturday 18th July 2026

For more details contact Barbara Murray on
07592 881108 or email barbaraqsc@gmail.com

To exhibit your work please complete the tear-off section of this entry form with child's name, parent/guardian's contact details and return to the Methodist Church by Friday 26th June.

One piece of art per young person (up to and including age 16), **MAXIMUM SIZE: A3 (297 x 420mm), UNFRAMED, to be delivered to the Church by Tuesday 7th July at the latest, between 11am - 12pm.**

Please write title (or description) of picture, name and age of artist, in capital letters on reverse of picture.

Prizes and certificates can be collected as they are announced at 2.30pm on Saturday 18th July.

Pictures can be collected when the exhibition closes on Saturday between 3pm - 3.30pm. Please note that while every care will be taken to ensure the safety of all artwork in the exhibition, all works are displayed at the owners own risk.

.....
First name Surname..... Age

Telephone Email

Title (or description) of picture

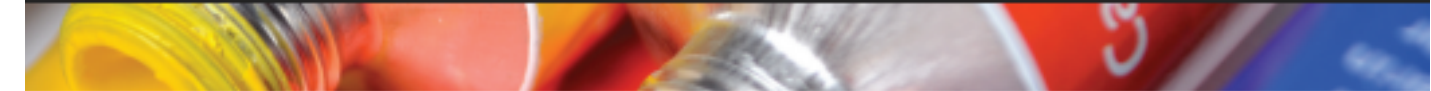
Personal information you give on this form will be treated in the strictest confidence and will not be transferred to any digital database, except for your email address which may be used only to contact you personally with any information concerning Wellington Methodist Church Art Group, if you tick the box below giving the Art Group permission to contact you via email in the future. This form will be retained by WMC Art Group until the end of the exhibition 2026 and then destroyed. If you wish to stop receiving emails from WMC Art Group please contact Barbara Murray on 07592 881108 or email barbaraqsc@gmail.com

Please tick box to give Wellington Methodist Church Art Group permission to contact you via email.

I understand that I exhibit my artwork at my own risk.

The Methodist Church
UK registered charity no. 1130091

Signature of parent/guardian Date.....



Our art exhibition is open to all artists,
all abilities; it's a wonderful opportunity
for art to be enjoyed in our community

ART EXHIBITION 2026

Dear Artist

Once again Wellington Methodist Church Art Group is planning to hold an Art Exhibition and this year it will be held at the Church on **Friday 17th and Saturday 18th July 2026 from 10am to 3pm each day**. We hope we can interest you in exhibiting some of your work. Pieces can be 2D or 3D, in any media including photography.

To exhibit your work **please return an Entry Form to the Methodist Church by Friday 26th June** at the latest, so that we can produce the catalogue. No late entries will be accepted. If you would like us to send you an Entry Form please email **Linda Carter on lindap8080@gmail.com**

As with all exhibitions, and especially with all the safety precautions we continue to undertake, we are asking artists for a **minimum entry fee per piece of £5** to exhibit. This will be collected when artwork is handed in. **Please deliver your artwork to the Church on Thursday 16th July, from 10.30am to 12pm and attach a label to the back of each piece of artwork with your name and title of piece.** You can display up to a maximum of three works, none of which should have been displayed before in one of our exhibitions. If you wish to sell your work we ask for prices to be a minimum of £20. If you prefer not to sell your work, only one piece can be exhibited as not for sale. Limited hanging space may restrict the number of artworks exhibited. We therefore reserve the right to display less artworks in the exhibition than submitted. It may be necessary to display some items on tables.

Maximum size (including frame): 24" x 20", 60cm x 50cm, pictures need to be framed and fitted with D rings and cord. Please check that when hung the **cord is not visible above the top of the frame**. Display labels will be produced to go with your work. A commission of 20% will be charged on any works sold to help cover our costs. Please see Terms and Conditions on back of this letter.

Work must be collected when the exhibition closes on the Saturday between 3pm - 3.30pm or only by prior arrangement on Tuesday 21st July. Please note that while every care will be taken to ensure the safety of all work in the exhibition, all work is displayed at the owners' own risk. Artists are strongly advised to insure their own works as the Church only covers public liability insurance.

We appreciate offers of help with stewarding each day of the exhibition, greeting visitors and being available for enquiries and sales. Refreshments will be served on both days and we would be grateful for any donations of biscuits, small cakes or cakes to slice which can be sold. Please indicate on the Entry Form if you are able to help or contact me directly.

If you have any queries, please don't hesitate to get in touch with me. We look forward to hearing from you. This will be our 16th Art Exhibition. Our past exhibitions have been a great success and with your support, this one will be as well.

Barbara Murray
On behalf of Wellington Methodist Church

WELLINGTON METHODIST CHURCH ART GROUP

CONTACT: Barbara Murray
New Street, Wellington, Telford TF1 1LU
Telephone 07592 881108
Email barbaraqsc@gmail.com
www.wellingtonmethodist.org.uk

Find us on Facebook 

All proceeds from the Art Exhibition, after expenses,
will be donated to Wellington Methodist Church


The **Methodist Church**
UK registered charity no. 1130091

ART EXHIBITION 2026

Friday 17th and Saturday 18th July
10am to 3pm

Terms and Conditions

The exhibition is open to all artists local to Telford.

To exhibit your work, please return this Entry Form to the Methodist Church by Friday 26th June.

Please deliver your artwork to the Church on Thursday 16th July, from 10.30am to 12pm. We are asking adult artists for a **minimum entry fee per piece of £5** to exhibit, as handed in.

All work must be unwrapped on delivery, with any packaging taken away.

All artwork is displayed at the owners' own risk.

Work must be collected when the exhibition closes on the Saturday between 3pm - 3.30pm or only by prior arrangement on Tuesday 21st July.

A maximum of three works may be submitted, none of which should have been displayed before in one of our exhibitions. If you wish to sell your work we ask for prices to be a minimum of £20. If you prefer not to sell your work, only one piece can be exhibited as not for sale.

Only original artwork can be entered; artwork created from a kit will not be accepted. If the piece is a copy of another artists work this is acceptable but the title must include a reference to the original artist as After Artist's Name.

Maximum size (including frame): 24" x 20", 60cm x 50cm, pictures need to be framed and fitted with D rings and cord. When hung the **cord must not be visible above the top of the frame**. Alternatively, pictures can be supplied mounted, if covered with cellophane.

Limited hanging space may restrict the number of artworks that can be exhibited. We therefore reserve the right to display less artworks than submitted. Please note that Wellington Methodist Church have the option to exclude works from the exhibition which might offend, and please note that photography will be allowed in the exhibition but visitors will be made aware that all images are subject to copyright.

A 20% commission will be taken on all work which is sold to help cover costs. Payment to artists for sold works will be by cheque.

If you would like to donate any of your greetings cards to sell for Church funds, please hand in when delivering your artwork. Unfortunately we are unable to sell cards on behalf of an artist.

Data Protection

Personal information you give on your Entry form will be treated in the strictest confidence and will not be transferred to any digital database, except for your email address which may be used only to contact you personally with any information concerning Wellington Methodist Church Art Group, if you tick the box on your Entry form giving the Art Group permission to contact you via email in the future. Your Entry form will be retained by WMC Art Group until the end of the exhibition 2026 and then destroyed. If you wish to stop receiving emails from WMC Art Group please contact Barbara Murray on 07592 881108 or email barbaraqsc@gmail.com

Please return your ENTRY FORM to Barbara Murray by Friday 26th June latest

WELLINGTON METHODIST CHURCH ART GROUP New Street, Wellington, Telford TF1 1LU

Telephone 07592 881108 Email barbaraqsc@gmail.com

www.wellingtonmethodist.org.uk

Find us on Facebook 

All proceeds from the Art Exhibition, after expenses, will be donated to Wellington Methodist Church

The **Methodist Church** 
UK registered charity no. 1130091

WELLINGTON METHODIST CHURCH
 Minister: Rev. Roger Dunlop

ART EXHIBITION 2026

ENTRY FORM

To exhibit your work, please return this Entry Form to the Methodist Church by Friday 26th June.

Please deliver your artwork to the Church on Thursday 16th July, from 10.30am to 12pm.

Work must be collected when the exhibition closes on the Saturday between 3pm - 3.30pm or only by prior arrangement on Tuesday 21st July.

Friday 17th and Saturday 18th July
10am to 3pm

First name Surname

Please note, if your work has sold, cheque will be made payable to you, as your name above, and your name will appear in the catalogue as this unless you request otherwise

Telephone Email

Title (or description) of work *Please list in alphabetical order, 25 characters maximum	Media	Approximate size (cm)	Sale price/ Not for sale*

*Please note, only one piece can be exhibited as not for sale

IMPORTANT: Please attach a label to the back of each artwork with title and your name

See exhibition letter for Terms and Conditions, and information regarding Data Protection

Please tick box to give Wellington Methodist Church Art Group permission to contact you via email

I understand that:

- Adult artists are asked for a minimum entry fee per piece of their artwork of £5 to exhibit
- I exhibit my work at my own risk and that a 20% commission will be taken on all work which is sold
- I give permission for a photograph of my work to appear in WMC Art Exhibition publicity and their web site

Artist's signature Date.....

Please place a tick in the boxes below if you are able to help with stewarding or refreshments.

Donation of cakes or biscuits?				
Friday 17th July steward/refreshments	10am - 12pm	12 - 1pm	1 - 3pm	
Saturday 18th July steward/refreshments	10am - 12pm	12 - 1pm	1 - 3pm	

Please return your ENTRY FORM to Barbara Murray by Friday 26th June latest

WELLINGTON METHODIST CHURCH ART GROUP New Street, Wellington, Telford TF1 1LU

Telephone 07592 881108 Email barbaraqsc@gmail.com

www.wellingtonmethodist.org.uk

UK registered charity no. 1130091

All proceeds from the Art Exhibition, after expenses, will be donated to Wellington Methodist Church.



HeartSpace

worship for today

HeartSpace on Sundays

10:30am

Trinity Centre

Upcoming Dates

No HeartSpace on Sunday in May

(You are welcome to join us at Upton Magna Village Hall at 11:00am)

Sunday 21st June

Sunday 19th July



Contact:

heartspace@shifnalbenefice.org.uk



Reaching out together to share God's amazing faith, hope and love!



A Prayer Meeting is held at Horsehay Methodist Church on the first Thursday of each month

For the Autumn/Winter months, the meetings will start at the earlier time of 2.30pm



Motown

Daytime Disco

Also featuring hits from the '50s - '80s



Only
£5.00

Raising funds to
support
local older people

Saturday 25 July

1.00 - 4.00pm

**Hadley Community Centre
30 High St, Hadley TF1 5NL**

For more info contact:

t: 01743 233 123

e: fundraising@ageukstw.org.uk



★ Light refreshments

★ Themed mocktails

★ Raffle

Supported by Local Councillor Julie Kaur

Circuit Prayer Space

Circuit Prayer Space on a Monday morning at 8:30am.

Val Smith is inviting you to a scheduled Zoom meeting.

Topic: Circuit Prayer Meeting

Time: This is a recurring meeting Meet anytime

Join Zoom meeting:

[https://zoom.us/j/96716434790?
pwd=RTZZa210Q1ZOWCtLTWk3NHoyWDVIQT09](https://zoom.us/j/96716434790?pwd=RTZZa210Q1ZOWCtLTWk3NHoyWDVIQT09)

Meeting ID: 967 1643 4790

Passcode: 355690

God loves you
unconditionally, no strings attached.
That's the good news.

Faith Space - An online service for all

Starts at 6:30pm on the link below.

Weekly zoom services for anyone and everyone wherever in the world you are!

Join Zoom meeting:

[https://zoom.us/j/95651019665?
pwd=bGgyVEdvQ0cvNDRpWm5HTVB0UDRmdz09](https://zoom.us/j/95651019665?pwd=bGgyVEdvQ0cvNDRpWm5HTVB0UDRmdz09)

Meeting ID: 956 5101 9665

Passcode: 395669

God bless you all and see you soon!



Bible Studies in the Circuit

Circuit Online Bible Study

Bible study on Mondays at 1:30pm.

Please click on the link below.

<https://zoom.us/j/95651019665?pwd=bGgyVEdvQ0cvNDRpWm5HTVB0UDRmdz09>

Please join us as we work our way through Matthew. Matthew was very good at keeping records and his account of spending time with Jesus and growing as a Christian himself, is very inspiring. All are welcome.

Meeting ID: 956 5101 9665

Passcode: 395669

Admaston meet on the 2nd Tuesday of the month between 10-11:30am. They currently meet in the home of one of the church family but if the numbers increased they would be happy to transfer the bible study to church.

Cartway, Bridgnorth has 3 bibles study groups.

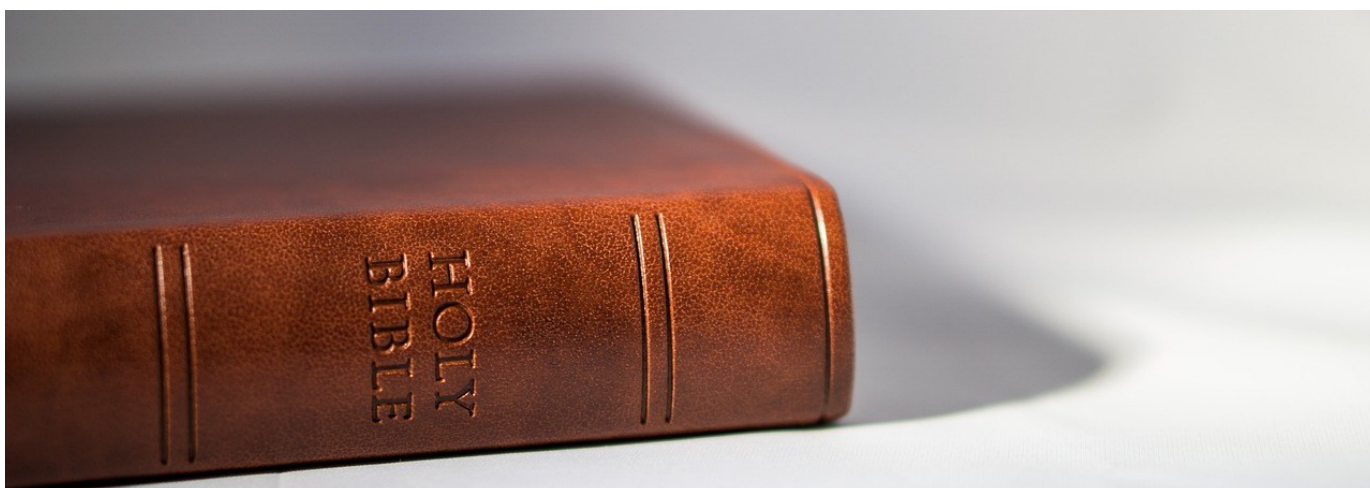
Shambles Group meet on 2nd Monday of the month at 10:30am

Orchard House Group meet on 3rd Monday in the month at 10:30am

Greenfields Group meet 3rd Tuesday in the month at 2pm.

Dawley - Bible study group meets for two 5-6 weekly sessions each year. One during Lent the other during Advent.

Dunwell - Has a bible study before church service each Sunday (Service starts at 10am)



Spiritual Abuse Awareness training dates 2026



Spiritual Abuse Awareness Training

Developed by the Methodist Church Safeguarding Team, Learning Network and Survivors Group in conjunction with Dr Lisa Oakley, Chester University & Thirtyone.eight

Course overview:

- What is spiritual abuse?
- What is the impact of the experience
- How to build healthy cultures

10.30 – 15.30

29th January 2026

4th June 2026

24th September 2026

19th November 2026

on Zoom

To book your place, please follow this link:
<https://imethodist-spiritual-abuse-training.eventbrite.co.uk>

For more information please contact Christine Kennedy (ckennedy@methodistchurch.org.uk)
Bridget Down (bridget@methodistchurch.org.uk) or David Knight (david@methodistchurch.org.uk)

The **Methodist Church**

We are pleased to announce 4 new dates for the Spiritual Abuse Awareness Training in 2026:
29 January

4 June

24 September and

19 November

All the sessions are on Thursdays, from 10.30 – 15.30

To book, please use the Eventbrite link: [Book on Eventbrite for Spiritual Abuse Awareness training](https://imethodist-spiritual-abuse-training.eventbrite.co.uk)

See the [Spiritual Abuse - The Methodist Church](#) webpage for further details.

Download a poster [Spiritual Abuse Awareness training poster](#)

Please get in touch if you have something to share.

Email:

circuitssupport@telfordmeth.org.uk

or phone 01952 505108



Garden Volunteers Wanted

Do you enjoy gardening and have a couple of hours a week spare?

If so, we'd love you to join a small team to help us maintain our sensory garden at the back of Dawley Christian Centre Methodist Church, situated in the middle of the Dawley High Street.

For more details please call Sharon on 01952 505108.

Thank you.





Albrighton Methodist Church

Regular church activities

Cafe Central

Every Thursday 10.00 to 12.00

Excellent coffee!
Meet with friends, old and new.



Monthly Cafe

First Saturday in the month 10.00 to 12.00

With high quality bric-a-brac and book stalls.



Open Door

First Tuesday in the month
7.30 to 9.00

Wide variety of speakers ranging from singing, wildlife, travel logs, health related.....



£2 per head. Speaker usually puts fees to a charity.



UPDATE!



Telford Methodist Circuit
International Project 2026
together with

Ajumako Osedzi Methodist Primary School,
Ghana

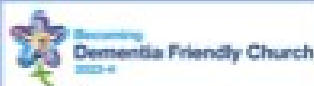


Our aims:

- 1) the provision of an outside canteen
- 2) the renovation and repainting of the classrooms & offices

Can you help us raise £6500 by the end of 2026?

Thank you for the £1650 already donated!



Bringing us together to share
God's amazing faith, hope and love.

Forget me not Group
for people affected by dementia.
**Third Thursday of
the month at 2:00pm**
Come and join us - there's a warm
welcome and a friendly atmosphere.

For more information, or for if you want to have a
conversation about memory difficulties or
dementia, contact Sarah Thorpe on 07982 248949 or
sarah.thorpe121@gmail.com

You're invited to join us ...

1st Wellington Boys' Brigade and Girls' Association

Where: Wellington Methodist Church, TF1 1LU

When: Wednesday evening 5:30 to 7pm

Who: Boys & girls, ages 5 to 11

Why: **Join the Adventure!**

What: Lots of things ...

Play Games – Craft activities
Learn new Things - Meet new friends
Learn about the Christian Faith
Table Tennis – Having fun
Music – Competitions – Badgework
Baking – Football – Dodgeball

THE BOYS' BRIGADE & GIRLS' ASSOCIATION
the adventure begins here

Call or Whatsapp
Company Leader
Alastair Batrick
07977 508723

Coffee Morning at Cartway Methodist Church, Bridgnorth

On the 1st Saturday of each month between 10am –12 midday there is a Coffee Morning at Cartway Methodist Church.

There's going to be a great raffle,.

All are welcome.



Wellington Methodist Church

Are Craft and Chat Group meet on the 2nd & 4th Friday of each month from 10am-11:45am.

There is a small charge but this does include a drink

You are welcome to drop in any time.

Everyone is welcome.



Coffee Mornings at Horsehay

**Every Wednesday:
10.30am - 12.00 noon**

**Join us for tea/coffee,
fellowship and lots of
chat and laughter!**



Ladies' Fellowship at Horsehay Second Tuesday of each month

in the vestry @2.30pm

ALL WELCOME - BRING A FRIEND!

Painting for Pleasure at Horsehay Methodist Church

Informal art groups (no tutor, but lots of chat and helping each other with tips and techniques). Whatever your skill level, if you enjoy drawing and/or painting, why not come and join us? **Thursday and Friday mornings** 10.00 - 12.30. £5.00 per session.

Wool Wanted

If anyone has any spare balls of wool they don't need, can you let Sharon (01952 505108) in the Circuit Office know please?

At Dawley we are making knitted and crocheted blankets for the dementia patients at the Princess Royal Hospital.

The colourful blankets help patients, particularly those with dementia, to find their way back to bed more easily – and also see the edge of the bed more clearly when getting in and out. They also provide a more homely feel to the wards. Thank you.

[Calling all knitters: blankets wanted for patients with dementia – SaTH](#)



Bereavement Cafe

A monthly opportunity to meet and chat with others who have been bereaved, hosted by members of local churches.

Second Monday of each month

2:30-4:00pm

Wellington Methodist Church



Foundation Safeguarding Course at Dawley Christian Centre on Tuesday 29th September from 7:00-9:30pm. (Registration from 6:45pm).

Methodist Safeguarding Training: Which safeguarding training am I required to attend?

The safeguarding training offered by the Methodist Church includes the **Foundation** and **Advanced** Modules. Please see the document below for details of who needs to attend which level of training.

[What level of safeguarding training is needed - May 2026](#)

Safeguarding training must be renewed every four years: this only applies to the highest level of safeguarding training required. Everyone must attend Foundation Module once. However, for roles that then require completion of the Advanced Module, this must be completed within 6 months of starting in the applicable role. Renewing training will then only be at the higher, Advanced Module, level until the individual is no longer in an applicable role, when training requirements will be reviewed.

Further details for participants about each module and the ways training can be accessed are included on the participants webpage for each course below.

Foundation Module Training

[Foundation Module 2024 Edition \(participants\) - The Methodist Church](#)

The Foundation Module can be accessed either in an in-person setting, in a group on Zoom or by online self-study via MCBX. It is recommended anyone who is completing the course for the first time should attend an in-person course, as some items may trigger difficult memories.

[Training - The Methodist Church](#)



Lauren Baxendale

Circuit Safeguarding Officer

Dawley Christian Centre, High Street, Dawley, Telford, TF4 2EX
07904 814741
Safeguarding@telfordmeth.org.uk | www.telfordmeth.org.uk

Circuit 3/18 | Registered Charity 1134372

Please note that I work part-time—my regular working hours are Tuesday to Thursday during office hours. This email and any attachments are confidential. If you are not the intended recipient, please inform me and delete the message.

I wanted to share a quick update regarding our safeguarding contacts within the Connexional Team. As some of you may already be aware, Sue Holder has now retired after 12 years in her role, and Neil Hutchinson has taken over from her.

Neil will be working 21 hours, generally Monday to Wednesday. Steph Bradley remains our main Regional Officer for Safeguarding, working 33 hours across the week. However, both can be contacted out of office hours for any urgent safeguarding matters.

Please update your records with their contact details below:

Neil Hutchinson
Email: hutchinsonn@methodistchurch.org.uk
Mobile: +44 (0) 7384 810901

Steph Bradley
Email: bradleys@methodistchurch.org.uk
Mobile: 07817 808557

Safeguarding
Young people and vulnerable adults

If there are any further changes, I will let you know.

Lauren

Safeguarding Training – Now Available Online

The Safeguarding Foundation Course is now available online via [MCBX](#), making it easier than ever for church members to complete their safeguarding training.

This flexible option is ideal for those who find it difficult to attend face-to-face sessions, as the course can be completed at your own pace. MCBX (mcb.theologyx.com) is the Methodist Church's online learning platform, providing access to safeguarding training, supporting materials, and a downloadable certificate on completion.

This online course complements, rather than replaces, face-to-face and participatory training, which continue to be an important part of safeguarding learning.

If you need to complete the Safeguarding Foundation Course, please speak to your Church Safeguarding Officer for further guidance.



Lauren Baxendale
Circuit Safeguarding Officer

Dawley Christian Centre, High Street, Dawley, Telford, TF4 2EX
07904 814741
Safeguarding@telfordmeth.org.uk | www.telfordmeth.org.uk

Advanced Safeguarding Module Training

The District has updated the booking arrangements for Advanced Safeguarding Module training courses.

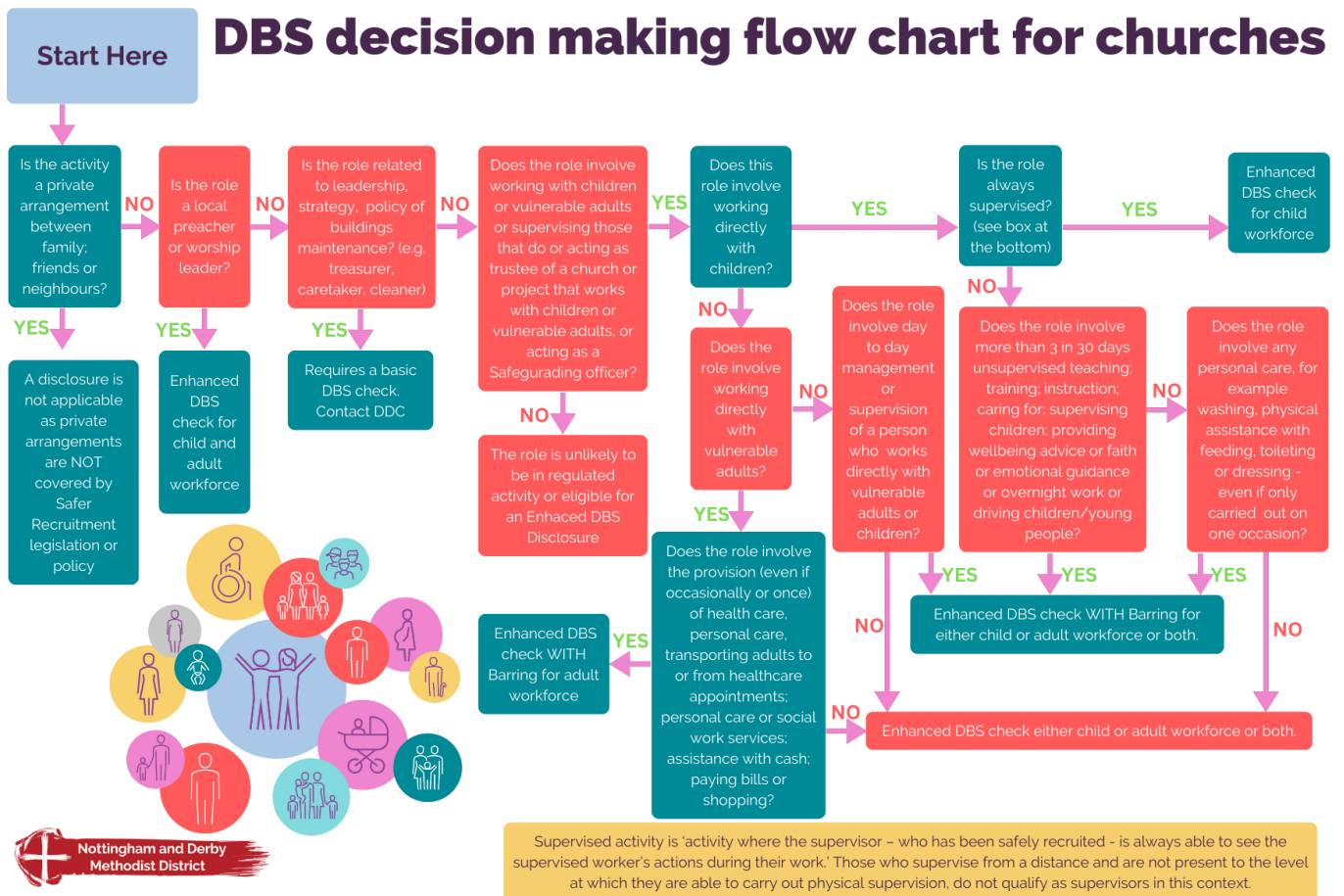
Anyone who is required to complete the Advanced Module, or renew their training, should use the current District booking link to view available courses and make a reservation. Courses are available both face-to-face and via participatory Zoom sessions.

For details of current course dates and to make a booking, please use the following link:

[Stephanie Bradley](#)

Many thanks,

Lauren



New Safeguarding Reporting Form

Safeguarding is everyone's responsibility, and clear communication is key to keeping our community in the Telford Methodist Circuit safe and supported.

A new **Safeguarding Reporting Form** is now in use across the Circuit. Copies have already been shared with your **Church Safeguarding Officers (CSOs)** and should shortly be **appearing on the Circuit website and your church safeguarding noticeboards**.

If you don't see a copy, or if you have a safeguarding concern, please notify your **designated CSO** as soon as possible. If your church does not have a CSO appointed, you can contact:

Lauren Baxendale, Circuit Safeguarding Officer safeguarding@telfordmeth.org.uk | 07904 814741

Stephanie Bradley, Regional Officer for Safeguarding bradleys@methodistchurch.org.uk | 07817 808557

By reporting concerns promptly using the new safeguarding reporting form, you help ensure that issues are recorded appropriately, responded to quickly, and escalated where necessary.

Thank you for helping us maintain safe and welcoming places for all.



CHURCH SAFEGUARDING CONCERN FORM

(Any person can complete this form)

PLEASE NOTE: If you are worried about contacting us and giving your details, please be assured that we will do what we can to support you. Please telephone your District Safeguarding Officer and they can talk with you about this. Your District Safeguarding Officer can also help you to complete this form or take details over the telephone.

We can arrange pastoral care for you if you would find this helpful. If you would like this, please tick here or contact your District Safeguarding Officer.

Your details

Name:			
Role/Position:			
Tel:			
E-mail:			
Circuit/District:			
Date:		Time:	

Details of the person you are worried about

Name:			
Address:			
	Postcode:		
Tel:			
E-mail:			
Child or Adult:	Approximate age or date of birth if known:		
Role (if applicable):			
Church/Circuit:			

If the person you are worried about is a child or vulnerable adult, it would be helpful if you could give some details about their carer.

Parent/Guardian/Carer

Name:			
Address:			
	Postcode:		
Tel:			
E-mail:			

Please tell us what you are worried about, when this happened and where:

Could you tell us what action has already been taken (if any)?

Please let us know of any other information you think would be helpful for us to know:

PLEASE NOTE:

We may need to share the information you have provided with other agencies to help ensure the person you are referring and others are safe. If the information is passed on to the statutory authorities your name may be disclosed to the person you are referring.

West Midlands District cares about your privacy and your trust is important to us. Our Privacy Notice explains how Local Churches, Circuits and Districts within the Methodist Church in Great Britain collect, use and protect your personal information. It also provides information about your rights (paragraph 9 of the Privacy Notice) and who to contact (paragraph 1 of the Privacy Notice) if you have any questions about how we use your information. You can find our Privacy Notice online (www.tmcpc.org.uk/about/data-protection/managing-trustees-privacy-notice). Your Circuit Safeguarding Officer will try to deal with any questions as a local point of contact. Alternatively, if viewing this form on line [click here](#) to read our Privacy Notice.

Thank you for completing this form.

The **calling** of the
Methodist Church
is to respond to the
gospel of **God's love**
in **Christ** and to live
out its discipleship in
worship and mission

Our Calling

The **Methodist Church** 